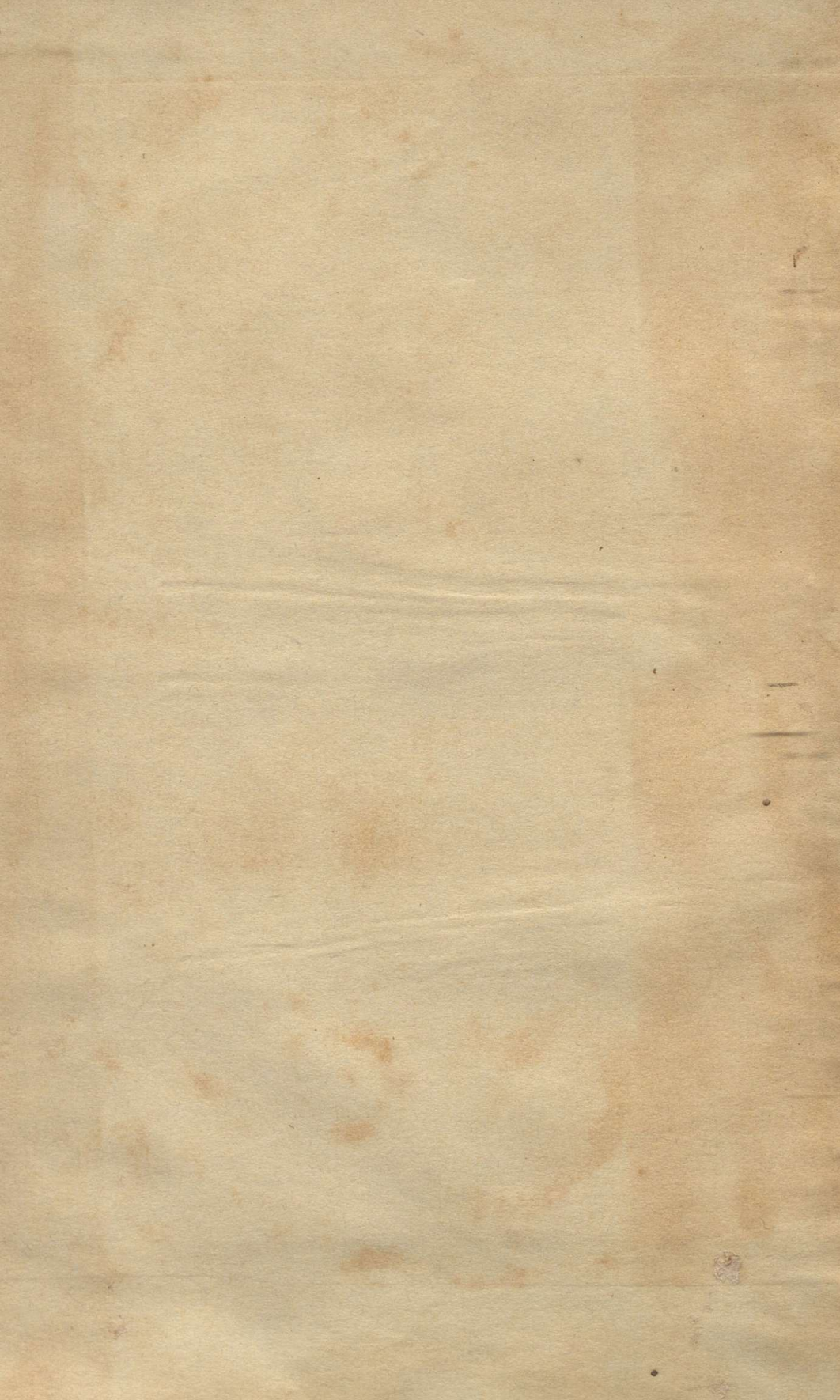


MUL



126074



A. 131

REPORT

Xh223

OF THE

COCHIN CHAMBER OF COMMERCE

FOR

1900-01.



Madras:

PRINTED BY ADDISON & CO.

1902

REPORT

INDIVIDUAL MEMBERS OF CHAMBER.

BLACK, E. H., ESQ.

POUND, R., ESQ.

DELL, J., ESQ.

ROTH, C. F., ESQ.

BOWMAN, J., ESQ.

FIRMS REPRESENTED IN THE CHAMBER

MESSRS. ASPINWALL & Co.

„ JOHN GRIEVE & Co.

„ PEIRCE, LESLIE & Co.

„ VOLKART BROTHERS.

THE BANK OF MADRAS.

6



126074
Xh223:MSTY
D2

CONTENTS.

	PAGE
Committee and Members of the Chamber	2
Accounts of the Chamber	4
Rules of the Chamber	5
Rates of Agency and Commission and other Customs of this Port ...	6
Tonnage Scale	8
Scale of Landing Charges	10
Rules for Measuring Cargo and Weighing Grain Cargo	12
Total Amount of Export and Import Duties collected from 1857 to 1901	13
Total Value of Exports and Imports at Cochin since the Chamber was founded	14
Valuation of Exports	15
Do. Imports	16
Statement of Exports from Cochin, 1900-01	18
Do. Imports to do. do.	22
Do. showing Distribution of Exports from Cochin, 1900-01 ...	26
Shipping Trade of Cochin	30
Statement showing Quantity and Value of Principal Articles Imported to Calicut	31
Do. do. do. exported from Calicut ...	33
Statement showing Quantity, Value and Description of Goods exported from Alleppey	35
Distribution of Exports from Alleppey... .. .	37
Do. do. do. imported into Alleppey	41
Statement of Exports from Mangalore, 1900-01	45
Do. Imports to do. do.	49
Do. Exports from Tellicherry do.	53
Do. Imports to do. do.	55
Do. Exports from Cannanore do.	57
Do. Imports to do. do.	59
Do. Exports from Badagara do.	61
Do. Imports to do. do.	62
Do. Exports from Beypore do.	63
Do. Imports to do. do.	65
Chambers' Library	66
Rate of Port Dues to be charged on Sea-going Vessels	71
Notice to Mariners	73
Schedule of Revised Rates of Boat Hire	74
Rainfall at Cochin from 1881 to 1901	75
Holidays—1901	76
Ceylon Chamber of Commerce	83
Correspondence	85

wl

Dr. Balance Sheet of the Cochin Chamber of Commerce from 1st July, 1900, to 30th June, 1901. Cr.

	RS.	A. P.	RS.	A. P.		RS.	A. P.	RS.	A. P.
To Salaries	927	0			By Balance			2,825	13 2
„ Rent	180	0			„ Measuring Bales, Chests, &c...	2,173	15 10		
„ Bonus	38	8			„ Testing Weights	17	4		
			1,145	8 0	„ Subscription towards Price Current	216	8 0		
„ Lloyd's Register	101	13 6						2,407	11 10
„ Lloyd's Shipping Index	158	2 0			„ Interest on Fixed Deposits	78	12 0		
„ Economist	32	6 0			„ Less Stamp and Postage	0	9 0		
„ Malabar District Gazette	2	0 0						78	0 0
			294	5 6					
„ Manifests	267	2 0							
„ Less Money Refunded	1	9 6							
			265	8 6					
„ Printing	432	12 0							
„ Furniture	22	4 0							
„ Stationery	45	10 6							
„ Books, Files, &c.	45	13 7							
„ Postage and Receipt Stamps	14	0 6							
„ Cooly hire	5	13 0							
„ Repairing Premises	18	4 0							
„ Telegrams	8	0 0							
„ Petty Charges	11	7 4							
			604	0 11					
Funds of the Chamber as under :-									
Fixed Deposit in Mercantile Bank of India @ $4\frac{1}{2}\%$	1,500	0 0							
Fixed Deposit in National Bank of India @ $4\frac{3}{8}\%$	1,000	0 0							
Bank of Madras Current Account...	502	5 1							
			3,002	5 1					
Rupees			5,311	12 0	Rupees... ..			5,311	12 0

47083

R U L E S .

- 1.—That the Society shall be called the "COCHIN CHAMBER OF COMMERCE."
- 2.—That the object of the Chamber shall be to promote a friendly feeling amongst the Mercantile Community of this port, to collect and record information on all matters of Mercantile interest, more especially in connection with the Malabar Coast, to exert itself in obtaining the removal of all acknowledged grievances, and to advance by all means within its power the common good, to receive reference from, and to arbitrate between parties willing to abide by the judgment and decision of the Chamber, and to form a code of practice to simplify and facilitate transactions of business.
- 3.—That all Europeans engaged in Mercantile pursuits on the Malabar Coast be eligible as Members on payment of subscription and on signature of the rules and regulations in the manner hereinafter prescribed.
- 4.—That firms or persons wishing to become Members must be duly proposed, seconded and balloted for; and a majority of two-thirds being requisite for election, previous notice for the election must be given in the ballot box.
- 5.—That voting by Proxy or by Members whose subscriptions are in arrears be not allowed.
- 6.—That the Chamber reserves to itself the power of expelling any of its Members, the same to be decided on at a General Meeting by a majority of three-fourths of the Members present.
- 7.—That the majority of firms constituting the Chamber be deemed sufficient to form any General Meeting, only one Member of each firm to count in voting, although two or more may be present.
- 8.—That the entrance fee of each firm shall be Rs. 50.
- 9.—That the affairs and funds of the Chamber shall be managed by the Honorary Secretary under the general supervision of the Members.
- 10.—The Chamber shall meet for the purpose of transacting business at such times as may suit their convenience, but not less than once a month.
- 11.—That the Honorary Secretary be appointed by the Members of the Chamber from among themselves.
- 12.—General Meeting of the Chamber shall be either Ordinary or Special, and shall be held as may be considered convenient for the despatch of business.
- The Annual General Meeting at which the report referred to in Rule No. 14 has to be submitted shall be held in the month of July in each year.
- 13.—In case of emergency, the Honorary Secretary shall be bound to call a General Meeting on receiving a requisition to that effect signed by two firms, notices of motions to be supplied to individual Members three days before the Meeting.
- 14.—That an Annual Report be drawn up of the proceedings, and upon being approved of be printed and circulated.
- 15.—The above rules are only to be altered or added to by a majority of the Members of the Chamber.
- 16.—That all references made to the Chamber for their opinion be subjected to a charge of Rs. 10 to be increased to Rs. 20 if the Chamber sees right, which amounts are to be carried to the funds of the Chamber.
- 17.—That all proposals to change the tonnage scale should be intimated to the members of the Chamber in writing at least one month before they come up for discussion, and that all notices of meetings should state the business which is to be transacted thereat.

Rates of Agency and Commission and other Customs of this Port.

As revised and adopted by the Chamber at a Meeting held on 9th July
with effect from 1st July, 1890.

	Per Cent.↓
On the total amount of payments and receipts of an account, excepting sums on which a higher commission has been previously charged, and sums paid for Bill of Exchange on England drawn by the Agent ...	Half
On purchasing and selling Bills of Exchange ...	One
On subscription to Government loans, purchasing, selling, transferring, or exchanging Public Securities and Bank Shares ...	Half
On obtaining enforcement of Government Promissory Notes ...	One eighth
On delivering up Public Securities or lodging them in any of the Public Offices ...	Half
On negotiating or renewing a loan or cash credit at the Bank of Madras, or elsewhere ...	Half
On receiving and delivering private commissions of Goods and Merchandise ...	Two and a half
On charge of House property and collection of Rents ...	Five
On letters of credit granted ...	One
On the management of Estates for Executors or Administrators, or on becoming Security for Administrators ...	Two and a half
On debts, when process of law or Arbitration is necessary.	Do.
If recovered by such means ...	Five
On Bills of Exchange, Notes, &c., dishonoured ...	One
On over-due debts collected ...	Two and a half
On all sales or purchases of Goods ...	Five
With the following exceptions:—	
On Houses, Lands and Ships ...	Two and a half
On Diamonds, Pearls and Jewellery... ..	Do.
On Treasure and Bullion	One
On all Goods and Merchandise withdrawn, shipped or delivered to order	} Half commission
On all other descriptions of property for sale, if withdrawn or otherwise disposed of by the owners	
On Goods transferred to Auction or Commission Salesmen	
On investing Proceeds of Sales in Goods	Two and a half
On guaranteeing Sales, Bills, Bonds, Contracts for Goods, or other Engagements	Do.
On Ship's disbursements	Do.
On Ship's disbursements, when on Outward Commission on Freight or Passage money is earned	Five
On Chartering Ships of engaging Tonnage for other parties	Two and a half
On the amount of Freight or Passage money earned by Ships, by charter or otherwise, whether the same shall pass through the Agent's hand or not	Five
When the Commission of 2½ per cent. on the inward Freight, paid at home or in Cochin, does not in the case of Steamers <i>via</i> the Suez Canal exceed Rs, 100, then that sum shall be charged.	

	Per Cent.
On effecting Insurance, whether on Lives or Property ...	Two and a half
On settling Insurance claims, losses and averages of all classes, whether in Lives or Property and on recoveries of returns of Premium	Do.
On negotiating Bottomry or Respondentia Bond	Do.
On attending the delivery of Contract Goods	Two
On receiving Passage Money by Ships entered inwards ...	One
On realizing Freights	Two and a half
On arranging and superintending the transhipment of Cargo on the amount of Freight so re-engaged	Five
On the management of Vessels chartered elsewhere for the conveyance of Coolies or Troops on account of Passage money	Two and a half
For acting in the capacity of Trustee on the income of the Trust Fund... ..	Do.
On landing and re-shipping Goods from any Vessel in distress, or on landing and selling by auction damaged Goods from any such Vessel and acting as Agent for the Master on behalf of all concerned on the declared value of all such Goods as may be re-shipped and on the nett proceeds of all such Goods as may be publicly sold	Do.
Brokerage on freight engaged	Half
On receiving and transhipping Goods	Rs. 2 per ton
When the Freight is payable in sterling, the commission shall be calculated on the sterling amount at the following rates for Bank Bills, viz., at the rate for six months' sight Bank Bills when the Freight is by sailing ships, and at the rate for 3 months' sight Bank Bills when by steamer.	
On ships leaving the Port in ballast, which have been consigned inward upon the English nett registered tonnage, 6 annas per ton.	
On steamers leaving the Port in ballast, which have been consigned inward upon the English nett registered tonnage, 8 annas per ton.	
On ships leaving the Port in ballast, which have been consigned inward and outward upon the English nett registered tonnage, 12 annas per ton.	
On steamers leaving the Port in ballast, which have been consigned inward and outward upon the English nett registered tonnage, Re. 1 per ton.	
When the amount on which commission is payable is stated in Rupees, the commission shall be calculated in that currency, and when in sterling, at the rate provided for under the Rule which fixes the rate "on procuring Freight."	
With respect to a steamer or sailing vessel partially discharged which does not return to this Port for cargo on her homeward voyage, the rate shall be 8 annas a ton on every ton discharged, provided the total amount exceeds Rs. 100, failing which Rs. 100 shall be charged.	
The conversion into Indian currency of sterling freight payable in India shall, unless otherwise stipulated, be made at the rate for Bank Bill on London payable on demand, and the rate ruling at the close of a mail shall be the rate applicable to such purpose during the subsequent week.	
Brokerage on a forward contract shall be payable on the completion of the transaction.	
That Rs. 2 per shipping ton is a fair and legitimate rate of Commission for the receiving and shipping of Merchandise on which there is no charge, but for the simple cost of transhipping.	
That it shall be considered the custom of this Port that no return commission is payable on Freight engaged for firms out of Cochin, it being open of course to Agents to make their own arrangements with shippers.	
Two and a half per cent. commission on Bills of Lading Freight at par of exchange is payable on shipments by sailing vessel to London, but no such return on shipments to Continent and American or on cargo per steamer.	

COCHIN TONNAGE SCALE.

As Revised and Approved of by the Chamber of Commerce.

1901.

GOODS.	PACKAGES.	SHIPPING TON.
Arrowroot	... Cases	... 50 cubic feet.
Do.	... Bags	... 16 cwts nett.
Bees' wax	... Cases	... 50 cubic feet.
Do.	... Bags	... 16 cwts nett.
Betel-nut	... Do. or mats	... 16 do.
Blackwood	... In square logs	... 50 cubic feet.
Do. otherwise	... Do.	... 20 cwts nett.
Cardamoms	... Robbins	... 10 do.
Do.	... Bags	... 10 do.
Do.	... Cases	... 50 cubic feet.
Cassia	... Bales	... 800 lbs nett. } 50 cubic
Cinnamon	... Do.	... 800 do. { feet.
Do.	... Cases	... 50 cubic feet.
Cocoonut oil	... Casks	... 14 cwts nett.
Cocalus Indicus	... Robbins	... 14 do.
Do.	... Bags	... 16 do.
Coffee	... Casks	... 16 do.
Do.	... Bags	... 18 do.
Do.	... Cases	... 50 cubic feet.
Coir yarn and fibre	... Pressed bales	... 50 do.
Do.	... Bundles or coils	... 8 cwts. nett.
Do.	... Dholls not exceeding 4 lbs.	... 10 do.
Coir matting	... Rolls	... 50 cubic feet, $\frac{1}{2}$ allowed off for the round.
Coir rope	... Coils	... 8 cwts. nett.
Coir junk	... Pieces	... 12 do.
Copprah	... Robbins	... 10 do.
Do.	... In pressed bales	... 50 cubic feet.
Do.	... Bulk	... 12 cwts. nett.
Do.	... Bags	... 12 do.
Do.	... Do. each cup cut in 4 pieces	... 14 do.
Cotton	... Pressed bales	... 50 cubic feet.
Cowries	... Bags or cases	... 20 cwts nett.
Cutch	... Cases	... 50 cubic feet.
Do.	... Bags or baskets	... 16 cwts. nett. unscrew-
Cinchona	... Bales	... 50 cubic feet. [ed.
Elephant's teeth	... Cases	... 50 do.
Do.	... Bundles	... 18 cwts. nett.
Do.	... Loose	... 20 do.
Fish oil	... Casks	... 14 do.
Ginger	... Cases	... 50 cubic feet.
Do.	... Bags	... 12 cwts. nett.
Do.	... Casks	... 8 do.
Gingelly seed	... Bags	... 20 do.

Cochin Tonnage Scale—(Continued).

GOODS.	PACKAGES.	SHIPPING TON.
Gums of all kinds ...	Cases ...	50 cubic feet.
Bonemeal ...	Bags ...	20 cwts. nett.
Hemp ...	Screwed bales ...	50 cubic feet
Hides ...	Unpressed ...	12 cwts. nett.
Do. green ...	Do. ...	20 do.
Do. dry ...	Bales ...	50 cubic feet.
Horns, buffalo and cow.	Loose ...	16 cwts. nett.
Do. deer ...	Do. ...	12 do.
Lemon-grass oil ...	Cases or tanks ...	50 cubic feet.
Do. ...	Drums ...	50 do.
Linseed ...	Bags ...	18 cwts. nett.
Myrabolams ...	Do. ...	16 do.
Nux vomica ...	Robbins ...	14 do.
Do. ...	Bags ...	16 do.
Nutmegs ...	Cases ...	50 cubic feet.
Oil seeds ...	Bags ...	17 cwts. nett.
Other oils ...	Tanks, cases or drums...	50 cubic feet.
Pepper ...	Bags ...	16 cwts. nett.
Do. ...	Robbins ...	14 do.
Plumbago ...	Bags or barrels ...	20 do.
*Poonac ...	Bundles, bales or bags ...	20 do.
Rice ...	Bags ...	20 do.
Saltpetre ...	Do. ...	20 do.
Sandal & sapanwood }
Sandalwood roots ...	Do. or bundles ...	} 13 do.
Do. ...	Loose ...	} ... }
Sugar ...	Bags ...	20 do.
Tallow ...	Casks and cases ...	18 do.
Tea ...	Chests ...	50 cubic feet.
Timber (all kinds), square logs or planks.	50 do.
Do. round logs	50 do.
Do. otherwise	20 cwts. nett.
Turmeric ...	Bags ...	14 do.
Wheat ...	Do. ...	20 do.
Do. ...	Mooras ...	18 do.
Citronella oil ...	Cases, drums or tanks ...	50 cubic feet.
Mica ...	Cases ...	50 do.

Coir junk, horns, oil breakers, hides loose, and all packages not exceeding 56 lbs. gross to be taken as broken stowage at half freight.

* To be 17 cwts. per shipping ton from 1st January, 1902.

Rates of LANDING CHARGES on Goods as agreed to between the Agents of the British India and the Asiatic Steam Navigation Companies, Cochin.

GOODS.	Landed at Cochin between 15th September and 15th May.	Landed at Narrakel or Malliporum between 15th May and 15th September.	Discharged at Narrakel or Malliporum between 15th May and 15th Sep., but not landed there owing to stress of weather and brought by sea to Cochin.	Discharged and landed at Cochin between 15th May and 15th September.	REMARKS.
			Half extra on Narrakel rates.	1/3rd extra on Cochin rates.	
Rice, grain, seeds, &c., in bags 1 1/2 c. each nett	Rs. 9 ⁰ / ₀ ...	Rs. 12 1/2 ⁰ / ₀ ...	Rs. 15 ⁰ / ₀ ...	Rs. 10 1/2 ⁰ / ₀ ...	} Rs. 3 ⁰ / ₀ extra for bags weighing 2 cwts. or thereabouts, and anything below this and over 1 1/4 cwts. the extra charged to be in proportion.
Sugar, sandalwood, ginger in bags ...	„ 12 ⁰ / ₀ ...	„ 15 1/2 ⁰ / ₀ ...	„ 18 1/2 ⁰ / ₀ ...	„ 13 1/2 ⁰ / ₀ ...	
Cases containing 1 dozen quarts ...	2 as. each ...	3 as. each ...	4 1/2 as. each ...	2 1/2 as. each ...	
Do. do. 3 do. ...	3 „ „ ...	5 „ „ ...	7 1/2 „ „ ...	3 1/2 „ „ ...	
Cases oilman stores and provisions, small ...	6 „ „ ...	8 „ „ ...	12 „ „ ...	7 „ „ ...	
Do. do. do. large ...	12 „ „ ...	Re. 1 „ „ ...	Re. 1 1/2 „ „ ...	14 „ „ ...	
Do. kerosine oil ...	2 1/2 „ „ ...	3 as. „ „ ...	4 1/2 as. „ „ ...	3 „ „ ...	For a shipt. not exceeding 100 cases.
Do. do. ...	2 „ „ ...	2 1/2 „ „ ...	3 3/4 „ „ ...	2 1/2 „ „ ...	Do. do. exceeding 100 cases.
Bales and/or cases, piece-goods, gunnies, &c.					
Do. do. do. 1 @ 5 ...	12 „ „ ...	Re. 1 „ „ ...	Re. 1 1/2 „ „ ...	14 „ „ ...	Do. do. of 5 packages or less.
Do. do. do. 6 @ 30 ...	10 „ „ ...	14 as. „ „ ...	„ 1-5 „ „ ...	12 „ „ ...	} For shipments exceeding 5 packages.
Do. do. do. any number exceeding 30 ...	8 „ „ ...	12 „ „ ...	„ 1-2 „ „ ...	9 „ „ ...	
Bales and/or cases, twist 1 @ 5 ...	10 „ „ ...	14 „ „ ...	„ 1-5 „ „ ...	12 „ „ ...	For a shipt. of 5 packages or less.
Do. do. do. 6 @ 30 ...	8 „ „ ...	12 „ „ ...	„ 1-2 „ „ ...	9 „ „ ...	} For shipments exceeding 5 packages.
Do. do. do. any number exceeding 30 ...	6 „ „ ...	10 „ „ ...	15 as. „ „ ...	7 „ „ ...	
Hoop iron ...	1 „ per cwt.	2 „ per cwt.	3 „ per cwt.	1 1/3 „ per cwt.	
Bundles of hides ...	5 „ each ...	7 „ each ...	10 1/2 „ each ...	6 as. 8 p. each.	
Do. of medicines, raisins, debdar wood, L. pepper, coriander, &c. ...	3 „ „ ...	4 1/2 „ „ ...	6 „ „ ...	3 1/2 as. „ „ ...	
Kegs paint, oil, tobacco, &c. ...	2 „ „ ...	3 „ „ ...	4 1/2 „ „ ...	2 „ 8 p. „ „ ...	

Wine and spirits in hogsheads	...	12 ,, per hhd.	Re. 1 per hhd.	Re. 1½ per hhd.	Re. 1 per hhd.
Do. do. in puncheons	...	Re. 1 ,, punc.	,, 1¼ ,, punc.	,, 1-14 ,, punc.	,, 1-4 ,, punc.
Iron pans or bowls in cask	...	1 ,, cask.	,, 1½ ,, cask.	Rs. 2-4 ,, cask.	Re. 1-5-4 per cask.
Chests of opium	...	Rs. 3 ,, chest.	3 as. per chest.	,, 4-8 ,, chest.	Rs. 3 per chest.
Pitch in cask	...	8 as. ,, cask.	10 ,, ,, cask.	15 as. ,, cask.	10 as. per cask.
Copper sheets, brass, nails, &c.	...	2 ,, ,, cwt.	3 ,, ,, cwt.	4½ ,, ,, cwt.	2½ ,, ,, cwt.
Camphor in cases	...	6 ,, ,, case.	8 ,, ,, case.	12 ,, ,, case.	8 ,, ,, case.
Sodawater in barrels	...	6 ,, ,, barl.	8 ,, ,, barl.	12 ,, ,, barl.	8 ,, ,, barl.
Fruits in baskets	...	4 ,, each ...	6 ,, each ...	9 ,, each ...	5 ,, 4 p. each.
Perambulators	...	Rs. 3 ,, ...	Rs. 3-8 ,, ...	Rs. 5-4 ,, ...	Rs. 3-8 ,, ...
Casks, empty, hhds.	...	4 as. per hhd.	6 as. per hhd.	9 as. per hhd.	4¾ as. per hhd.
Tea in chests	...	8 ,, ,, chest.	10 ,, ,, chest.	15 ,, ,, chest.	10 ,, ,, chest.
Tobacco in bales	...	2 ,, ,, bale.	2½ ,, ,, bale.	3¾ ,, ,, bale.	2½ ,, ,, bale.
Sulphur in barrels	...	4 ,, ,, barl.	6 ,, ,, barl.	9 ,, ,, barl.	5 ,, 4 p. per barrel.
Sulphuric acid in cases	...	8 ,, ,, case.	10 ,, ,, case.	15 ,, ,, case.	10 as. per case.
Barrels of brandy measuring 20/22 gallons.	...	6 ,, ,, barl.	8 ,, ,, barl.	12 ,, ,, barl.	8 ,, ,, barl.
Casks, empty, pipes and puncheons	...	6 ,, each ...	9 ,, each ...	13½ ,, each ...	8 ,, each...
Hogsheads in shooks	...	2 ,, ,, ...	4 ,, ,, ...	6 ,, ,, ...	2 ,, 8 p. ,, ...
Pipes and puncheons in shooks	...	4 ,, ,, ...	6 ,, ,, ...	9 ,, ,, ...	5 ,, 4 p. ,, ...
Sugarcandy in cases	...	3 ,, per case.	4 ,, per case.	6 ,, per case.	4 ,, per case.
Cases of matches	1 @ 5.	10 ,, ,, ...	14 ,, ,, ...	Re. 1-5 ,, ...	13 ,, 4 p. ,, ...
Do. do.	1 @ 30.	8 ,, ,, ...	12 ,, ,, ...	,, 1-2 ,, ...	10 ,, 8 p. ,, ...
Do. do. any number exceeding 30.	6 ,, ,, ...	10 ,, ,, ...	15 as. ,, ...	8 ,, per ,, ...	2 ,, per ,, ...
Soap in cases, small.	...	1¾ ,, ,, ...	2½ ,, ,, ...	3½ ,, ,, ...	2 ,, per ,, ...
Do. do.	...	1½ ,, ,, ...	2½ ,, ,, ...	3¼ ,, ,, ...	1¾ ,, per ,, ...
Barrels of cement	1 @ 25.	6 ,, ,, barl.	8 ,, per barl.	12 ,, per barl.	8 ,, per barl.
Do. do. any number exceeding 25.	5 ,, ,, ...	7 ,, ,, ...	10½ ,, ,, ...	6 ,, 8 p. ,, ...	13 ,, 4 p. each.
Drums of caustic soda	...	10 ,, each ...	14 ,, each ...	Re. 1-5 each ...	13 ,, 4 p. each.
Casks of paint	...	8 ,, ,, ...	12 ,, ,, ...	,, 1-2 ,, ...	10 ,, 8 p. ,, ...
Do. asphalte up to 25	...	6 ,, ,, ...	8 ,, ,, ...	12 as. ,, ...	8 ,, ,, ...
Do. do. over 25	...	5 ,, ,, ...	7 ,, ,, ...	10 ,, ,, ...	6 ,, 8 p. ,, ...
Chillies in bundles	...	8 ,, ,, ...	12 ,, ,, ...	Re. 1-2 ,, ...	10 ,, 8 p. ,, ...

For a shipt. not exceeding 100 cases.
Do. do. exceeding 100 cases.

All goods to be taken delivery of within ten days from the date of landing, after which godown rent will be charged and the Steamer Company will not be responsible for condition of packages or for shortages of contents, &c., &c.

RULES AND REGULATIONS

FOR

MEASURING CARGO.

To come into force on the 1st September, 1892.

1. No measurements to be accepted except such as are taken by the Sworn Measurer appointed by the Chamber.

2. A fee—the amount of which shall in no case exceed $\frac{1}{2}$ anna a bale, but which may be regulated by the Chamber from time to time to meet necessary expenses—shall be levied on bales shipped, for which the attendance on the Sworn Measurer has been required.

3. The Measurer shall measure not less than 5 bales in every hundred. In measuring, the callipers are to take in the rope or iron on the one side of bale, and leave it out on the other,— $\frac{1}{8}$ th inch to be given and taken alternately.

4. The Measurer shall give a certificate of measurement which must be produced by the shipper when applying for Bills of Lading.

5. Should any doubt arise as to the bales being of the customary weight (viz., $2\frac{1}{4}$ cwts. nett. Coir Yarn; 200 lbs. nett, Coir Fibre), the Measurer is empowered to weigh any such bales, and in the event of there being any difference in weight, separate measurements must be taken.

6. No measurement shall be held good unless such as are taken by callipers bearing the Chamber's stamp.

7. In case of dispute as to measurements, the Master Attendant be requested to measure the disputed package or packages, and his decision shall be considered final; the party found to be in error shall pay a fee of Rs. 15.

8. Measurements are to be taken where Merchandize is stored ready for shipment.

9. The charge for measurement shall be defrayed by the ship.

Weighing Grain Cargo (inward).

Cargo to be weighed on shore, and unless otherwise specially arranged, each lighter from vessel to call at Custom House and there weigh not less than 10 bags (not selected separately but in tires or running landing numbers), and the average of such weights on a whole parcel to be taken as the weight for calculating freights. In the event of any lighter failing to stop at Custom House or at any other landing place previously arranged, vessel to have the option of recovering freight on the contents of any such lighter or lighters at Bills of Lading weight.

For Bulk cargoes it is the custom for consignees to send on board empty gunnies for removing cargo and same to be weighed on shore as before-mentioned,

EXPORTS.

Rice and paddy and choora	...	3 annas per maund of
Pepper when not covered by Travancore Rawan-	...	82 2/7 lbs.
nahs	...	5 Rs. per candy of 500 lbs.

**Total Amount of Export and Import Duties collected
from 1857 to 1900.**

Official Year 1st April to 31st March.	Exports.	Imports.	Total.
	RS.	RS.	RS.
1857-1858	34,477	25,100	59,577
1858-1859	29,930	18,940	48,870
1859-1860	30,364	17,731	48,095
1860-1861	63,908	16,142	80,050
1861-1862	56,383	13,083	69,466
1862-1863	92,585	52,188	1,14,773
1863-1864	1,10,066	14,217	1,24,283
1864-1865	51,762	15,463	67,225
1865-1866	36,333	15,232	51,565
1866-1867	29,606	24,737	54,343
1867-1868	34,742	20,538	55,280
1868-1869	70,327	21,056	91,383
1869-1870	54,775	30,507	85,282
1870-1871	26,227	37,200	63,227
1871-1872	81,995	31,676	1,13,671
1872-1873	60,045	32,584	92,639
1873-1874	27,815	45,392	73,207
1874-1875	31,421	20,196	51,617
1875-1876	35,389	29,558	64,947
1876-1877	1,056	17,904	18,960
1877-1878	125	25,375	25,500
1878-1879	1,667	33,060	34,727
1879-1880	712	24,531	25,243
1880-1881	845	18,776	19,121
1881-1882	415	14,883	15,298
1882-1883	93	13,788	13,881
1883-1884	910	9,498	10,408
1884-1885	537	13,728	14,265
1885-1886	377	16,534	16,911
1886-1887	357	13,499	13,856
1887-1888	119	18,566	18,685
1888-1889	298	19,321	19,619
1889-1890	78	17,905	17,983
1890-1891	316	25,256	25,572
1891-1892	76	26,173	26,249
1892-1893	114	25,862	25,976
1893-1894	2,461	29,663	32,124
1894-1895	32	43,169	43,201
1895-1896	96	44,377	44,473
1896-1897	9,017	35,877	44,894
1897-1898	555	40,641	41,196
1898-1899	1,043	42,747	43,790
1899-1900	2,608	40,335	42,943
1900-1901	1,303	44,953	46,256

Total Value of Exports and Imports at Cochin since the Chamber was founded in 1857.

Official Year 1st April to 31st March.	Exports.	Imports.	BALANCE IN FAVOUR OF	
			Exports.	Imports.
	RS.	RS.	RS.	RS.
1857-1858	23,37,838	27,81,308	...	4,43,470
1858-1859	15,66,567	18,47,217	...	2,80,650
1859-1860	15,61,480	15,64,362	...	2,882
1860-1861	38,86,878	34,93,346	3,93,532	...
1861-1862	59,74,937	42,84,216	6,90,721	...
1862-1863	64,21,785	38,16,783	26,05,002	...
1863-1864	78,84,481	57,53,000	24,22,989	...
1864-1865	74,67,941	50,74,952	23,92,989	...
1865-1866	58,70,549	54,83,373	3,87,176	...
1866-1867	51,74,588	43,50,852	8,13,736	...
1867-1868	71,69,256	42,03,762	29,65,494	...
1868-1869	95,33,814	66,97,895	28,35,919	...
1869-1870	86,33,210	54,21,587	32,11,623	...
1870-1871	71,48,581	55,70,202	15,78,379	...
1871-1872	1,06,23,005	61,69,285	44,53,720	...
1872-1873	99,05,270	70,63,021	28,52,249	...
1873-1874	89,36,444	57,97,085	31,39,359	...
1874-1875	75,57,950	54,64,249	20,93,701	...
1875-1876	84,39,749	59,62,275	24,77,474	...
1876-1877	96,12,408	76,78,354	19,34,054	...
1877-1878	90,81,112	73,65,921	17,15,191	...
1878-1879	85,72,957	75,97,329	9,75,628	...
1879-1880	69,73,521	39,70,529	30,02,992	...
1880-1881	65,81,132	45,51,926	20,24,206	...
1881-1882	66,27,878	49,05,110	17,22,768	...
1882-1883	65,43,598	36,77,630	28,65,968	...
1883-1884	78,21,625	48,79,862	29,41,763	...
1884-1885	89,67,158	49,30,136	30,37,022	...
1885-1886	78,69,647	62,54,268	16,15,379	...
1886-1887	80,09,042	48,10,284	31,98,758	...
1887-1888	81,54,921	50,64,419	30,90,502	...
1888-1889	94,04,967	49,15,039	44,89,928	...
1889-1890	91,25,457	51,79,968	39,45,489	...
1890-1891	91,86,879	71,66,502	20,20,377	...
1891-1892	1,08,33,950	69,97,136	38,36,814	...
1892-1893	1,28,81,925	88,97,599	39,84,326	...
1893-1894	1,15,42,994	78,84,093	36,58,901	...
1894-1895	1,52,07,558	98,78,005	53,29,554	...
1895-1896	1,61,49,003	1,01,98,371	59,50,632	...
1896-1897	1,33,75,404	68,66,250	65,09,154	...
1897-1898	1,39,99,281	79,07,621	60,91,660	...
1898-1899	1,59,66,489	91,89,361	67,77,128	...
1899-1900	1,86,76,687	1,15,04,379	71,72,308	...
1st July to 30th June 1900-1901	1,80,13,951	1,49,99,505	30,14,446	...

EXPORTS.

VALUATION OF COCHIN TRADE.

ARTICLES.	For twelve months from 1st July to 30th June.													
	1888.	1889.	1890.	1891.	1892.	1893.	1894.	1895.	1896.	1897.	1898.	1899.	1900.	1901.
	RS.	RS.	RS.	RS.	RS.	RS.	RS.	RS.	RS.	RS.	RS.	RS.	RS.	RS.
Coir yarn...	18,71,718	19,54,367	23,85,908	22,20,591	25,56,482	26,63,142	26,00,476	32,88,457	33,05,170	29,35,485	31,11,643	36,42,702	39,30,134	40,02,025
Do. rope ...	2,40,741	2,70,935	3,71,039	3,51,035	3,56,476	3,96,428	3,94,187	3,70,952	4,75,204	5,47,632	4,59,325	5,23,736	5,79,952	4,95,240
Do. fibre ...	1,14,871	87,030	1,48,909	1,34,208	2,16,820	1,98,732	1,37,079	1,38,481	1,24,937	1,51,671	1,85,923	1,68,500	1,60,416	2,51,610
Cotton	3,210	1,54,150	3,20,112	...	2,054	4,69,725	...	3,355	6,276	9,606
Coffee ...	2,43,029	66,806	39,507	10,959	29,948	35,671	33,616	78,106	72,569	79,129	83,187	85,421	61,635	41,862
Coprah ...	3,62,591	3,22,351	3,46,630	6,49,869	6,71,122	6,30,800	2,71,741	2,99,199	2,02,832	99,067	1,92,250	1,08,247	2,15,886	3,66,228
Cocoanuts	36,193	15,883	31,970	1,13,526	60,660	1,07,157	1,01,080	31,551	89,104	57,920	1,00,045	97,530	24,808	58,364
Cardamoms	32,928	60,629	19,100	58,825	43,170	1,27,386	37,860	27,346	28,854	...	5,338	26,453	15,997	22,429
Ginger ...	1,71,122	1,57,231	1,18,123	1,23,319	3,56,374	3,09,833	3,87,960	2,61,095	3,91,655	2,89,053	3,08,390	1,28,164	1,62,906	1,25,642
Hides ...	29,751	860	285	10,309	8,526	3,331	100	...	2,140	10,263	8,466	2,804	7,041	...
Horns ...	2,206	5,234	8,991	1,450	4,318	6,702	2,576	1,752
Nux vomica	74,530	35,252	1,46,038	2,04,657	9,869	77,013	1,18,398	72,552
Oils, cocoanut	37,09,298	39,13,354	37,05,562	42,64,313	42,69,809	48,36,760	55,29,888	85,08,042	67,66,986	44,46,987	45,96,156	61,81,791	72,63,267	61,33,848
Do. fish ...	17,956	13,212	2,691	13,837	6,176	13,246	38,732	13,462	11,817	1,158
Do. lemon grass	34,004	46,596	33,914	49,781	35,727	44,737	56,925	83,617	1,06,001	78,624	1,26,599	1,32,730	1,15,544	91,910
Pepper ...	7,31,996	10,19,525	3,15,783	2,15,990	2,41,226	3,67,684	1,49,970	1,85,233	2,01,093	3,56,251	2,08,843	12,93,716	11,49,375	13,50,312
Tea	95,428	1,30,887	4,30,666	7,42,109	6,72,717	9,23,394	17,57,208	13,21,574	9,17,835	13,04,046	11,18,646
Turmeric ...	13,365	19,339	23,264	32,994	...	1,26,706	622	43,433	19,898	21,085	...	86,412	1,00,810	48,455
Wood & manufactures	3,09,077	3,42,112	3,00,354	3,53,281	2,69,972	4,17,730	2,95,590	2,42,952	3,08,589	2,13,853	3,09,308	3,49,933
Sundries ...	7,57,147	32,887	44,179	51,428	45,565	19,45,355	17,68,716	21,01,586	22,24,952	15,97,850	22,95,962	24,28,876	40,17,358	37,82,251
Government stores	1,114	8,23,158	7,55,064	827	200	7,839
Oils ...	8,373	1,084	2,038	26,245	59,161	66,702	66,921	41,325	49,102	64,386	1,04,343	46,690	65,252	56,149
Total...	87,62,010	91,87,845	87,98,394	87,78,224	93,65,829	1,35,95,414	1,29,46,129	1,64,66,319	1,54,22,609	1,32,42,676	1,34,19,149	1,64,02,301	1,93,17,951	1,80,13,951

IMPORTS.

VALUATION OF COCHIN TRADE.

ARTICLES.	For twelve months from 1st July to 30th June.														
	1888.	1889.	1890.	1891.	1892.	1893.	1894.	1895.	1896.	1897.	1898.	1899.	1900.	1901.	
	RS.	RS.	RS.	RS.	RS.	RS.	RS.	RS.	RS.	RS.	RS.	RS.	RS.	RS.	
Apparel ...	29,267	23,766	20,316	16,929	18,357	23,120	38,179	24,136	34,969	22,718	41,181	50,859	39,651	61,605	
Coal ...	4,000	7,390	1,545	...	1,747	2,883	
Drugs and medicines.	69,961	72,951	90,345	94,175	1,00,511	1,30,357	86,363	98,257	85,825	1,04,583	1,46,122	1,63,566	2,05,356	1,51,035	
Fruits and vegetables.	42,107	1,74,817	43,035	1,08,812	64,065	89,748	57,167	2,42,496	4,70,854	2,88,785	1,70,909	3,47,767	4,40,804	4,05,070	
Rice ...	16,15,204	14,87,848	19,80,374	26,43,755	16,34,555	22,69,829	8,85,332	26,59,964	34,26,290	12,78,015	23,86,566	30,33,094	33,83,239	39,64,296	
Paddy ...	4,57,076	4,19,314	9,70,787	15,45,673	18,75,291	40,03,062	28,53,810	35,98,735	17,22,555	16,56,874	20,49,671	27,75,783	32,01,112	44,57,063	
Other grains	1,49,208	1,10,883	1,35,879	2,13,823	3,07,463	3,19,095	3,50,933	4,15,192	4,23,888	3,41,066	2,82,108	4,11,302	2,77,224	4,47,462	
Gunnies ...	18,237	52,427	45,584	43,020	20,140	15,141	11,979	11,871	16,759	18,602	8,309	14,648	
Hides and skins	17,036	574	1,236	1,548	878	2,603	1,185	1,158	
Hardware and cutlery.	25,856	28,000	31,272	62,256	50,525	89,875	36,111	1,01,604	93,708	78,722	82,347	1,00,676	1,46,249	2,68,385	
Liquors ...	56,695	55,037	55,187	63,053	72,200	77,390	78,507	94,101	82,692	63,448	62,951	72,507	85,695	85,437	
Machinery & millwork.	4,813	11,180	34,992	18,547	38,623	53,571	1,00,588	2,02,233	79,826	1,79,970	97,151	83,678	89,091	2,30,358	
Metals ...	2,02,084	2,54,065	2,75,055	2,58,348	3,84,660	4,20,222	15,260	4,44,292	4,73,520	2,61,218	3,70,823	3,55,437	3,27,782	4,12,737	
Oils ...	73,062	95,534	83,940	1,47,759	1,00,311	2,13,458	2,58,703	2,10,556	3,05,717	4,38,042	2,61,616	3,03,379	3,78,195	6,42,572	
Piece-goods	7,66,075	6,93,091	6,92,344	8,82,942	8,34,030	8,24,012	10,38,224	8,27,505	7,82,921	7,51,880	5,83,540	7,08,759	7,20,291	7,05,957	
Provisions	31,912	42,439	36,071	82,530	1,05,625	1,03,434	1,23,615	1,23,634	1,25,774	1,47,109	87,518	81,861	1,19,756	1,35,727	
Paper and pasteboard.	40,857	52,299	24,328	31,741	32,808	38,152	31,666	46,064	59,165	90,444	56,333	51,337	74,218	57,405	
Paints ...	7,155	4,992	6,261	4,235	10,556	8,654	9,878	7,687	9,791	6,758	10,380	10,654	12,018	18,329	
Salt ...	10,144	8,324	29,224	35,918	16,420	29,291	12,258	24,257	12,728	10,880	11,755	12,028	8,665	8,654	
Seeds ...	89,838	83,349	93,588	1,20,309	1,22,536	1,26,118	1,72,536	1,59,522	1,71,193	2,10,511	1,72,226	1,30,724	1,46,515	1,80,914	
Spices ...	47,134	24,277	12,126	19,982	28,062	21,868	62,076	34,515	21,755	61,812	72,658	1,00,200	37,829	81,773	

Sugar	...	42,579	52,143	63,354	92,982	1,20,912	1,65,469	1,32,983	1,91,755	1,64,704	1,39,114	1,49,517	1,22,818	2,17,236	2,20,603
Stationery	...	9,826	11,325	14,443	7,608	10,415	16,692	12,767	25,706	28,717	30,317	21,502	39,646	37,024	36,432
Specie	15,800	89,505	34,600	2,07,500	9,455	27,031	67,185	35,457	54,186
Twist and yarn	7,59,101	2,08,327	2,49,201	2,09,166	2,65,011	4,08,803	4,20,542	2,60,383	2,94,138	3,50,304	3,62,336
Tobacco	...	37,581	43,292	34,139	41,692	60,078	68,320	73,778	84,523	68,784	40,501
Wood and manu- factures of	...	1,81,362	3,28,351	2,67,859	1,99,975	3,03,093	2,83,898	2,23,527	3,35,385	3,19,136	2,10,260	3,12,452	2,38,886	3,66,136	2,39,189
Sundries	...	6,66,284	18,013	8,557	3,904	11,236	6,12,886	12,63,185	6,92,674	7,89,991	8,84,677	7,65,733	6,94,565	9,54,971	16,11,387
Coir and cordage..	...	9,954	80,543	41,326	12,254	6,496	16,251	9,478	1,227	11,031	32,608	22,161	54,859	1,29,737	1,97,238
Opium	...	43,406	7,30,766	4,63,745	46,380	45,100	37,200	24,892	33,900	36,500	34,000
Governmentstores.	...	2,206	1,872	3,115	2,181	2,062	3,540	6,017	2,341	7,455	5,743	4,709	4,731	...	2,893
Total	...	47,50,919	49,61,472	55,58,482	75,24,607	66,56,245	1,03,83,939	84,47,571	1,09,73,026	1,02,57,302	78,72,538	85,34,528	1,03,16,042	1,17,57,407	1,49,99,505

Exports of Principal Articles from the Port of Cochin from 1st July, 1900, to 30th June, 1901.

ARTICLES.	Europe.		America.		Ceylon.		Madras.		Bengal.	
	Quantity.	Value.	Quantity.	Value.	Quantity.	Value.	Quantity.	Value.	Quantity.	Value.
		RS.		RS.		RS.		RS.		RS.
Cocoanut oil ... cwts.	44,151	7,80,912	21,651	3,70,709	62	988	17,410	3,80,765	104,324	16,32,418
Lemon grass oil ... doz.	1,879	89,750	50	2,000						
Other oils ... cwts.	38	897	1,355	17,583	10	169
Coir yarn ... "	327,850	30,95,833	12,597	1,03,158	5,151	49,942	5,685	32,911	23,309	2,74,298
Do. rope ... "	1,223	13,110	514	5,366	45	362	3,626	32,848
Do. fibre ... "	12,449	1,40,653	881	7,850	98	980	179	2,500	12,912	92,774
Do. matting ... yds.	147,179½	1,39,636	39,100	39,100			677	677
Tea ... lbs.	1,992,443	11,02,762	1,132	566	6,515	3,258	4,829	2,153
Coffee plantation ... cwts.	765	40,569
Do. native ... "	1	35
Pepper ... "	13,990	5,57,099	4,433	1,77,300			690	27,599	6,885	2,70,290
Ginger ... "	994	25,154	50	1,250	83	2,075	31	654
Cardamoms ... "	27	2,261			4	560
Turmeric ... "	829	8,101	1,038	6,859	2	15	490	5,441
Copprah ... "	2,722	20,511			300	3,001
Poonac ... "	76,382	2,73,470	236	236	21,329	47,953
Nux vomica ... "	398	2,854	8,412	47,566			81	413
Cotton twist ... lbs.	3,200	1,152	426,040	1,54,915	500	250
Cotton ... cwts.	101	2,859			10	66
Tea chest ... chests	68,040	62,992	5,850	5,762	41,005	40,018
Cocoanuts ... Nos.	300	18			5,900	171
Hooka shells ... "	2,751,000	32,655
Fish and prawns ... cwts.	7	1,500	6,927	50,141	920	6,125
Gunnies ... Nos.			217,139	32,595
Bamboo mats ... yds.			52,249½	4,461	200	15
Packing mats ... "			636,210	13,389

Cinchona	...	cwts.	109	3,545
Arrowroot	...	"	1,612	8,844
Croton seeds	...	"	12	360
Gum kino	...	"	160	31,255
Plumbago	...	"	24,549	1,22,745	51	254	21	105
Mica	...	lbs.	7,226	7,226
Hides and skins	...	cwts.	1	150	110	2,781	110	3,460
Sundries	...	"	...	3,84,722	...	89,203	...	1,65,009	...	7,26,097	...	10,445

Exports of Principal Articles from the Port of Cochin from 1st July, 1900, to 30th June, 1901—(Continued).

ARTICLES.	Burma.		Bombay.		Other Ports.		Total.		
	Quantity.	Value.	Quantity.	Value.	Quantity.	Value.	Quantity.	Value.	
		RS.		RS.		RS.		RS.	
Cocoanut oil	cwts.	62,563	9,73,301	129,309	18,84,309	7,248	1,10,446	386,718	61,33,848
Lemon grass oil	doz.	4	160	1,933	91,910
Other oils	cwts.	2,274	28,378	701	9,122	4,378	56,149
Coir yarn	"	9,659	85,816	46,967	3,19,577	7,272	40,490	438,490	40,02,025
Do. rope	"	9,599	88,472	46,019	3,07,928	5,881	47,154	66,907	4,95,240
Do. fibre	"	443	3,300	484	2,984	72	569	27,518	2,51,610
Do. matting	yds.	14,967	4,991	30	30	201,953½	1,84,434
Tea	lbs.	21,020	9,232	1,939	675	2,027,878	11,18,646
Coffee, plantation	cwts.	765	40,569
Do. native	"	12	406	26	762	3	90	42	1,293
Pepper	"	2,258	85,955	5,670	2,23,866	200	8,203	34,126	13,50,312
Ginger	"	94	2,450	4,124	93,572	27	487	5,403	1,25,642
Cardamoms	"	93	19,608	124	22,429
Turmeric	"	12	120	4,177	27,048	80	871	6,628	48,455
Copprah	"	27,177	3,20,227	1,875	22,489	32,074	3,66,228
Poonac	"	79,727	1,76,906	7,685	16,178	185,359	5,14,743
Nux vomica	"	300	1,500	9,191	52,333
Cotton twist	lbs.	755,200	2,76,912	10,673	1,620	1,195,613	4,34,749
Cotton	cwts.	370	2,575	274	3,736	32	370	787	9,606
Tea chests	chests.	114,895	1,08,772
Cocoanuts	Nos.	85,250	1,976	2,040,690	55,656	19,685	543	2,151,825	58,364
Hooka shells	"	25,325	115	170,653	1,774	2,946,978	34,544
Fish and prawns	cwts.	10,595	2,52,211	746	7,683	85	3,580	19,280	3,21,240
Gunnies	Nos.	8,000	1,200	207,440	30,791	432,579	64,586
Bamboo mats	yds.	685,777	58,624	11,689	555	749,915½	63,655
Packing mats	"	32,895	1,167	10,000	200	679,105	14,756

Cinchona	109	3,545
Arrowroot	956	7,449	30	226	2,598	16,519	
Croton seeds	15	415	209	5,896	236	6,671	
Gum kino	14	140	174	31,395	
Plumbago	24,621	1,23,104	
Mica	7,226	7,226	
Hides and skins	22	650	243	7,041	
Sundries	10,557	...	2,73,404	...	2,42,875	...	18,52,312	
Total for 1900-1901	1,80,13,951	
Total for 1899-1900	1,93,17,951	
Total for 1898-1899	1,64,02,301	
Total for 1897-1898	1,34,19,149	
Total for 1896-1897	1,32,42,676	

Imports into the Port of Cochin from 1st July, 1900, to 30th June, 1901.

ARTICLES.	Europe.		America.		Ceylon.		Madras.		Bengal.	
	Quantity.	Value.	Quantity.	Value.	Quantity.	Value.	Quantity.	Value.	Quantity.	Value.
		RS.		RS.		RS.		RS.		RS.
Apparel		6,022				2,002		505		2,080
Arms and ammunition								418		
Books and printed matter		1,045				200		1,676		50
Building and engineering materials		32,658				12		85,074		
Cabinetware and furniture		241						861		40
Candles lbs.	10,696	3,483			28	7				
Carriages, cycles, &c.		1,390		819		1,293		425		
Chemicals		470				52		72		
Clocks and watches No.	125	928			18	29	2	30		
Coffee cwts.							581	29,785		
Coir							23,815	1,96,157	90	900
Cotton piece-goods yds.	176,186	23,891			40	8	1,400	550	6,000	900
Cotton, raw cwts.							1,779	33,720		
Cotton twist and yarn lbs.	71,000	48,807			600	445	12,800	5,025		
Drugs and medicines		7,674				42,651		22,766		25,164
Dyeing and colouring materials cwts.	6	296					249	1,180		
Earthenware and porcelain		31,631						1,053		
Fodder, bran, oilcake, &c. cwts.							953	2,918		
Fruits and vegetables		9				1		3,99,464		
Glass and glassware		5,228				1,325		698		30
Grain and pulse, paddy cwts.							39,148	1,03,673	137,935	3,42,139
" " rice							70,437	3,04,299	341,375	15,80,269
" " other sorts... ..	2	31					5,829	27,098	15,877	66,669
Government stores								2,303		
Gums and resins... .. cwts.	lbs. 25	1			lbs.7	1			9	270
Hardware and cutlery		37,591				6,867		5,809		1,792
Hemp cwts.							25	393		
Instruments and apparatus		3,683		659		1,008		1,900		

Jute manufacture	469	...	370	...	10,619
Lac	cwts.	2	40
Leather manufactures	6	...	222	...	19	...	40
Liquors, ale, beer, &c.	...	gls.	328	852	...	198	402
Do. spirits	3,736	22,710	...	587	4,090	72	525
Do. wines	2,539	11,408	80	489
Machinery	1,07,213	58,281	...	400
Manure	...	tons	10	566	cwts. 2	4
Matches	10,942	937
Metals	...	cwts.	24,022	2,10,994	...	1,353	12,165	93	1,126	3	210
Oils	...	gls.	267	461	...	555	896	9,140	10,291
Paints and colours	1,575	175	...	30	...	225
Paper and pasteboard	13,354	26,476
Perfumery	141	358	...	278
Pitch, tar and dammer	...	cwts.	92	324	67	625
Provisions	1,779	18,493	...	146	1,623	1,710	22,283	lbs 56	25
Salt	...	l. mds.	7	56	544	1,795
Seeds	...	cwts.	3,999	29,892	7,309	43,120
Silk piece-goods...	...	yds.
Soap	...	cwts.	709	8,605	...	lbs. 3	5	...	18
Spices	...	lbs.	3,435	206	261,924	48,865	9,717	1,432
Stationery	7,525	2,417	...	100
Sugar	...	cwts.	5	100	...	3	38	14,068	1,75,547
Toys	1,757	69
Umbrellas	...	No.	32	33	...	59	113	3	6
Wax	...	cwts.	24	1,757
Wood, manufactures of	6,641	2,101	...	16,700	...	65,603
Wool, manufactures of	4,908	122
Sundries	3,15,866	4,018	...	2,72,597	...	6,792

Imports into the Port of Cochin from 1st July, 1900, to 30th June, 1901—(Continued).

ARTICLES.	Bombay.		Burma.		Other Ports.		Total.	
	Quantity.	Value.	Quantity.	Value.	Quantity.	Value.	Quantity.	Value.
Apparel ...		RS. 49,906		RS. 1,000		RS. 90		RS. 61,605
Arms and ammunition		418
Books and printed matter ...		2,222			5,193
Building and engineering materials ...		20,020		...		360		1,38,124
Cabinetware and furniture ... lbs.		1,917		...		5		3,064
Candles ...	16,534	5,529		27,258	9,019
Carriages, cycles, &c. ...		928		...		558		5,413
Chemicals ...		29,690		...		221		30,505
Clocks and watches... Nos.	543	4,205		688	5,192
Coffee ... cwts.		581	29,785
Coir ...	26	181		23,931	1,97,238
Cotton piece-goods... yds.	4,513,408	6,80,501		...	427	107	4,697,461	7,05,957
Do. raw ... cwts.	8,410	2,32,331	1,141	34,750		...	11,330	3,00,801
Do. twist and yarn ... lbs.	811,145	3,08,059		895,545	3,62,336
Drugs and medicines ...		52,372		...		408		1,51,035
Dyeing and colouring materials cwts.	582	2,229		837	3,705
Earthenware and porcelain ...		15,057		...		564		48,305
Fodder, bran, oilcake, &c. ... cwts.	863	1,585		1,816	4,503
Fruits and vegetables ...		5,293		...		303		4,05,070
Glass and glassware ...		48,613		93		...		55,987
Grain and pulse, paddy ... cwts.	217,681	6,28,520	1,104,662	29,83,186	178,027	3,99,545	1,677,453	44,57,063
Do. rice ...		10,848		532,409		5,996	28,200	961,065
Do. other sorts ...		55,719		6,721		2,554	14,687	86,702
Government stores ...		590		29,755		...		4,47,462
Gums and resins ... cwts.	2,118	19,464			2,893
Hardware and cutlery ...		2,16,114		2,127	19,736
Hemp ... cwts.	141	2,694		...		212		2,68,385
Instruments and apparatus ...		3,885		166	3,087
Jute manufacture ...		3,143		20		27		11,135
								14,648

Lac	...	cwts.	323	10,188	325	10,228
Leather manufactures	1,676	1,963
Liquors, ale, beer, &c.	...	gls.	2,756	7,115	3,282	8,369
Do. spirits	...	"	2,796	28,496	468	2,908	7,659	58,729
Do. wines	...	"	771	6,382	26	60	3,416	18,339
Machinery	64,464	2,30,358
Manure	...	tons	10	570
Matches	9,050	645	...	21,574
Metals	...	cwts.	15,135	1,87,034	482	1,208	41,088	4,12,737
Oils	...	gls.	1,236,030	6,30,784	98	140	1,246,090	6,42,572
Paints and colours	16,284	...	40	18,329
Paper and pasteboard	17,575	57,405
Perfumery	13,297	14,074
Pitch, tar and dammer	...	cwts.	1,539	5,764	1,698	6,713
Provisions	...	"	6,150	67,252	8	100	5,496	25,951	15,289	1,35,727
Salt	...	I. mds.	2,260	6,803	2,811	8,654
Seeds	...	cwts.	12,140	1,07,830	13	72	23,461	1,80,914
Silk, piece-goods	...	yds.	3,583	3,944	3,583	3,944
Soap	...	cwts.	893	12,181	1,602	20,809
Spices	...	lbs.	221,377	31,270	496,453	81,773
Stationery	26,390	36,432
Sugar	...	cwts.	3,358	43,168	146	1,750	17,580	2,20,603
Toys	3,795	5,621
Umbrellas	...	Nos.	...	49,893	43,403	50,045
Wax	...	cwts.	43,309	220	28	1,977
Wood and manufactures of	4	1,44,160	...	938	...	3,046	...	2,39,189
Wool	30,838	35,868
Sundries	1,60,928	...	409	...	3,419	...	7,64,029
Total for 1900-1901	1,49,99,505
Total for 1899-1900	1,17,57,407
Total for 1898-1899	1,03,16,042
Total for 1897-1898	85,34,528
Total for 1896-1897	78,72,538

Cochin Export Distribution from 1st July, 1900, to 30th June, 1901.

COUNTRIES.	OIL.						COIR.							
	Cocoanut Oil.		Lemon Grass Oil.		Other Oils.		Yarn.		Rope.		Fibre.		Matting.	
	Cwts.	Rs.	Doz.	Rs.	Cwts.	Rs.	Cwts.	Rs.	Cwts.	Rs.	Cwts.	Rs.	Yards.	Rs.
United Kingdom ...	23,532	4,16,655	600	31,650	114,949	10,74,586	503	4,632	9,294	1,11,715	134,250	129,940
America ...	21,651	3,70,709	50	2,000	12,597	1,03,158	881	7,850	39,100	39,100
Germany ...	16,149	2,77,170	175	7,000	126,071	12,51,214	720	8,478	932	9,909	500	500
France	1,079	50,100	38,696	3,31,005
Belgium ...	4,071	79,504	25	1,000	20,577	2,16,855	1,792	14,765	5,963	5,963
Austria ...	200	3,800	4,405	13,084	379	3,900
Italy	9,421	87,561
Holland ...	199	3,783	11,281	1,06,678	52	364
Denmark	6,466	3,233
Portugal	1,650	14,850
Australia ...	104	1,561
New Zealand
China	14	210
Africa
Straits	138	1,481	2,117	24,227	70	560
Ceylon ...	62	988	38	897	5,151	49,942	514	5,366	98	980
Burmah ...	62,563	9,73,301	9,659	85,816	9,599	88,472	443	3,300
Calcutta ...	104,324	16,32,418	10	169	23,309	2,74,298	3,626	32,848	12,912	92,774
Bombay ...	91,298	14,06,646	4	160	910	12,065	46,910	3,19,300	46,019	3,07,928	484	2,984	14,967	4,991
Madras ...	580	9,735
Other Indian Ports ...	62,005	9,57,578	3,420	43,018	12,876	72,247	3,795	23,079	181	2,509	707	707
Total for 1900-1901 ...	386,718	61,33,848	1,933	91,910	4,378	56,149	438,490	40,02,025	66,907	4,95,240	27,518	2,51,610	201,953	1,84,434
„ „ 1899-1900 ...	453,881	72,63,267	2,791 $\frac{3}{4}$	1,15,544	5,450	65,252	447,470	39,30,134	76,010	5,79,952	17,644	1,60,416	182,849 $\frac{1}{4}$	1,76,121

Cochin Export Distribution from 1st July, 1900, to 30th June, 1901—(Continued).

COUNTRIES.	Tea.		Coffee.				Pepper.		Ginger.		Turmeric.		Copprah.	
	lbs.	Rs.	Plantation.		Native.		Cwts.	Rs.	Cwts.	Rs.	Cwts.	Rs.	Cwts.	Rs.
			Cwts.	Rs.	Cwts.	Rs.								
United Kingdom ...	1,991,992	11,02,311	343	19,156	3,552	1,43,789	979	24,974	610	6,914	9	117
America ...	1,132	566	4,433	1,77,300	50	1,250	1,038	6,859
Germany	5,340	2,10,160	15	180	19	187	2,713	20,394
France	422	21,413	3,702	1,48,100	200	1,000
Belgium ...	451	451	100	4,000
Austria	396	15,850
Italy	600	23,200
Holland	300	12,000
Denmark
Portugal
Australia ...	480	240
New Zealand
China
Africa	50	600
Straits	1	7
Ceylon ...	6,515	3,258	1	35	83	2,075	2	15
Burmah	12	406	2,258	85,955	94	2,450	12	120
Calcutta	6,885	2,70,290
Bombay ...	21,020	9,232	26	762	5,607	2,21,708	3,989	91,294	4,123	26,565	27,124	3,19,595
Madras ...	2,675	1,337	4	160
Other Indian Ports ...	3,613	1,251	3	90	949	37,800	193	3,419	574	6,195	2,227	26,115
Total for 1900-1901 ...	2,027,878	11,18,646	765	40,569	42	1,293	34,126	13,50,312	5,403	1,25,642	6,628	48,455	32,074	3,66,228
„ „ 1899-1900 ...	2,278,775	13,04,047	1,013	56,694	193	4,940	30,635	11,49,375	8,115	1,62,906	10,624	1,00,810	20,372	2,15,886

Cochin Export Distribution from 1st July, 1900, to 30th June, 1901—(Continued).

COUNTRIES.	Poonac.		Nux. Vomica.		Cotton Twist.		Cotton.		Tea Chests.		Cocoanuts.		Hooka Shells.	
	Cwts.	Rs.	Cwts.	Rs.	lbs.	Rs.	Cwts.	Rs.	Chests.	Rs.	Nos.	Rs.	Nos.	Rs.
United Kingdom ...	1	5	398	2,854	101	2,859
America	8,412	47,566
Germany ...	76,299	2,73,259
France ...	82	206
Belgium	300	18
Austria
Italy
Holland
Denmark
Portugal
Australia
New Zealand
China
Africa
Straits	18	270
Ceylon ...	236	236	3,200	1,152	68,040	62,992
Burmah	755,200	2,76,912	370	2,575	85,250	1,976	25,325	115
Calcutta	500	150	41,005	40,018	2,751,000	32,655
Bombay ...	76,875	1,68,873	300	1,500	10,673	1,620	274	3,734	1,625,090	44,699	170,653	1,774
Madras
Other Indian Ports ...	31,866	72,164	81	413	426,040	1,54,915	24	168	5,850	5,762	441,185	11,671
Total for 1900-1901 ...	185,359	5,14,743	9,191	52,333	1,195,613	4,34,749	787	9,606	114,895	1,08,772	2,151,825	58,364	2,946,978	34,544
„ „ 1899-1900 ...	228,185	5,61,333	20,782	1,41,485	1,489,359	5,43,655	914	6,276	124,764	1,16,530	1,075,025	24,808	3,691,275	52,243

Cochin Export Distribution from 1st July, 1900, to 30th June, 1901—(Continued).

COUNTRIES.	Fish and Prawns.		Gunnies.		Bamboo Mats.		Cinchona.		Arrowroot.		Plumbago.		Mica.	
	Cwts.	Rs.	Nos.	Rs.	Yards.	Rs.	Cwts.	Rs.	Cwts.	Rs.	Cwts.	Rs.	lbs.	Rs.
United Kingdom ...	7	1,500	109	3,545	21,964	1,09,823	7,226	7,226
America
Germany	2,585	12,922
France
Belgium
Austria
Italy
Holland
Denmark
Portugal
Australia
New Zealand
China
Africa
Straits ...	74	3,530
Ceylon ...	6,927	50,141
Burmah ...	10,595	2,52,211	8,000	1,200
Calcutta	200	15	21	105
Bombay ...	145	5,135	205,420	30,521	685,597	58,612	950	7,415
Madras	51	254
Other Indian Ports ...	1,532	8,723	219,159	32,865	64,118	5,028	1,648	9,104
Total for 1900-1901 ...	19,280	3,21,240	432,579	64,586	749,915	63,655	109	3,545	2,598	16,519	24,621	1,23,104	7,226	7,226
„ „ 1899-1900 ...	26,876	3,56,322	549,905	94,094	1,111,601	1,12,426	864	33,391	3,179	19,994	34,026	1,75,212	19,604	15,231

Shipping Trade of Cochin.

Official Year.	Number of Vessels Tonnage.		Total Amount of Port Dues collected.			Other Sea Customs Revenue.		
	Vessel.	Tonnage.	RS.	A.	P.	RS.	A.	P.
1857-58	1,644	83,733	2,603	7	6
1858-59	1,707	75,748	2,357	1	9
1859-60	1,619	87,969	2,937	6	10
1860-61	1,819	94,407	4,852	15	3
1861-62	1,884	102,989	7,229	0	0
1862-63	1,718	99,331	7,326	11	9
1863-64	1,848	121,916	9,552	8	3
1864-65	1,588	131,404	9,806	0	0
1865-66	1,432	121,723	8,798	5	3
1866-67	1,259	99,400	6,821	15	9
1867-68	1,642	91,869	7,205	15	0
1868-69	1,780	125,212	14,212	3	6
1869-70	1,342	136,768	14,841	8	3
1870-71	1,466	131,482	13,606	9	3
1871-72	1,686	149,345	14,815	8	0
1872-73	1,430	162,901	19,650	0	3
1873-74	1,511	123,938	14,221	3	9
1874-75	1,842	164,747	19,739	1	0
1875-76	1,639	192,693	24,123	3	0
1876-77	1,598	204,796	27,811	9	0
1877-78	1,500	209,199	28,276	13	3	1,423	15	5
1878-79	1,484	216,065	29,868	12	6	1,309	11	10
1879-80	1,135	199,189	28,811	0	0	958	2	7
1880-81	1,106	217,786	31,694	5	0	1,308	7	7
1881-82	1,279	240,460	38,598	4	6	980	0	4
1882-83	1,537	236,018	36,185	13	11	1,210	12	4
1883-84	1,864	239,501	35,303	6	9	466	14	3
1884-85	1,973	276,080	42,670	11	0	480	11	6
1885-86	1,508	328,019	38,700	10	0	976	15	11
1886-87	1,455	326,471	38,295	5	6	902	3	8
1887-88	1,707	367,409	42,933	7	3	1,158	3	8
1888-89	1,831	358,957	38,295	6	0	662	9	9
1889-90	2,255	347,825	34,790	15	6	887	15	0
1890-91	1,718	433,692	46,928	2	9	1,374	9	3
1891-92	1,614	467,377	47,382	6	9	880	12	10
1892-93	1,946	508,049	50,825	10	0	790	4	9
1893-94	1,684	485,246	48,307	5	6	805	7	3
1894-95	1,782	525,336	57,180	6	7	890	2	10
1895-96	1,552	579,380	60,564	2	3	1,100	13	5
1896-97	1,558	423,092	39,928	14	6	1,045	9	2
1897-98	1,494	439,559	49,393	4	0	1,434	2	2
1898-99	1,650	532,819	65,267	10	3	2,695	8	7
1899-00	1,459	487,180	61,400	4	9	1,405	9	4
1900-01	1,834	545,495	70,923	9	11	1,921	1	10

Imports into the Port of Calicut from 1st July, 1900, to 30th June, 1901.

ARTICLES.	Europe.		America.		Ceylon.		Madras.		Bengal.	
	Quantity.	Value.	Quantity.	Value.	Quantity.	Value.	Quantity.	Value.	Quantity.	Value.
		RS.		RS.		RS.		RS.		RS.
Apparel	2,405	379	...	10,929	...	1,680
Coffee cwts.	14	206	426	17,256
Cotton, twist and yarn ... lbs.	119,751	92,113	2,400	1,800	110,975	41,726
Cotton manufactures, piece-goods ... yds.	100,926	13,361	5,118	1,557	22,900	4,557	4,100	775
Grain and pulse, paddy. cwts.	10,617	33,573
Do. rice	111,791	5,38,009	214,994	11,21,814
Jute manufactures, gunnies No.	323,793	91,688	88,100	18,639
Liquors, ale, beer and porter gals.	23	35	48	122
Do. wines	173	1,219	38	187	157	691
Do. spirits	607	4,552	9,840	95,654
Metals cwts.	2,292	26,557	113	2,388	211	3,763	1	85
Salt tons	578	5,830
Silk, piece-goods ... yds.	72	56
Spices, pepper ... lbs.	132,302	47,287
Do. betelnuts	55,191	3,627	463,372	2,686
Sugar cwts.	1	28	5,652	60,771	19	320
Tobacco lbs.	761	585	120	175	9,381	1,706	30,922	4,385
Woollen goods ... yds.	2,031	1,922	38	38
Sundries	2,23,226	...	315	...	41,328	...	5,63,263	...	1,89,718

Imports into the Port of Calicut from 1st July, 1900, to 30th June, 1901—(Continued).

ARTICLES.	Bombay.		Burma.		Other Ports.		Total.	
	Quantity.	Value.	Quantity.	Value.	Quantity.	Value.	Quantity.	Value.
		RS.		RS.		RS.		RS.
Apparel	...	18,190	20	...	33,603
Coffee	... cwt.	440	17,462
Cotton, twist and yarn	... lbs.	1,071,836	4,12,285	1,304,962	5,47,924
Cotton manufactures, piece-goods	... yds.	2,117,601	3,47,302	2,250,645	3,67,552
Grain and pulse, paddy	... cwt.	32,154	95,022	4,445	11,621	8,933	21,395	56,149
Do. rice	...	13,048	62,869	137,084	4,66,870	2,265	11,394	479,182
Jute manufactures, gunnies	... No.	127,964	16,853	22,000	2,609	561,857
Liquors, ale, beer and porter	... gals.	2,651	3,795	2,722
Do. wines	...	681	6,060	12	72	1,061
Do. spirits	...	1,934	21,028	12,381
Metals	... cwt.	10,730	1,34,286	16	320	13,363
Salt	... tons	19,883	16,63,873	20,461
Silk, piece-goods	... yds.	1,050	892	1,122
Spices, pepper	... lbs.	132,302
Do. betelnuts	... "	168	18	47,287
Sugar	... cwt.	10,877	1,34,192	518,731
Tobacco	... lbs.	18,967	6,156	24,331
Woollen goods	... yds.	12,676	9,669	16,549
Sundries	13,86,672	...	9,151	...	1,36,249	60,151
								14,745
Total for 1900-01	25,49,922
Do. 1899-00	82,71,849
Do. 1898-99	83,09,674
Do. 1897-98	67,17,277
Do. 1896-97	76,55,479
								53,38,755

Exports from the Port of Calicut from 1st July, 1900, to 30th June, 1901.

ARTICLES.	Europe.		America.		Ceylon.		Madras.		Bombay.	
	Quantity.	Value.	Quantity.	Value.	Quantity.	Value.	Quantity.	Value.	Quantity.	Value.
		RS.		RS.		RS.		RS.		RS.
Coffee ... cwts.	34,913	26,91,663	232	19,425	3,034	1,48,224	23,345	12,44,939	195	4,690
Coir ... "	43,866	3,63,763	9	74	17,333	1,68,111	19,463	1,33,459
Cordage ... "	123	792	9,475	66,814
Cotton piece-goods. yds.	717	771	68	10	1,395,444	3,43,620	100,450	55,684
Cocoanuts ... No.	45,450	1,093	19,455,875	4,94,406
Copprah ... cwts.	15,944	1,59,518	12,055	1,19,826	47,838	5,36,102
Rice in the husk ... "	1,992	7,369
Do. not in the husk. "	15,745	78,250	1,301	6,159
Oil, cocoanut ... gals.	25,512	28,062	83,204	86,467
Salt ... tons	126	4,169
Salted fish ... lbs.	1,456,082	2,82,703	203,588	17,902
Betelnuts ... "	40,850	3,829	896	95
Pepper ... "	1,221,087	4,50,062	22,400	8,000	1,855	696	60,303	19,060	451,282	1,56,629
Cardamoms ... "	3,030	4,545	12,784	18,886
Ginger ... "	713,177	1,73,423	1,855	464	25,532	6,007	963,472	2,16,814
Turmeric ... "	1,901	27,160	272	3,658	15,156	1,92,930
Sugar ... cwts.	8,304	67,575	16,675	1,11,811
Wood ... tons	372	38,432	35	2,247	983	48,405	1,511	47,748
Sundries ... "	...	19,53,512	...	4,574	...	1,21,731	...	6,91,741	...	4,91,896

Exports from the Port of Calicut from 1st July, 1900, to 30th June, 1901—(Continued).

ARTICLES.	Bengal.		Burmah.		Other Ports.		Total.	
	Quantity.	Value.	Quantity.	Value.	Quantity.	Value.	Quantity.	Value.
Coffee	RS. 10 350	...	RS. 396 33,096	...	RS. 3,670 2,80,316	...	RS. 65,795 44,22,703
Coir	30,429 2,84,161	6,998 43,983	...	118,098 9,93,551
Cordage	3,222 26,667	...	740 6,344	...	9,472 70,106	...	23,032 1,70,723
Cotton piece-goods	1,496,679 4,00,085
Cocoanuts	600,770 18,154	...	20,102,095 5,13,653
Copprah	3,987 43,381	...	79,824 8,58,827
Rice in the husk	1,992 7,369
Do. not in the husk	17,046 84,409
Oil, cocoanut	90 90	...	9,671 10,243	...	118,477 1,24,862
Salt	126 4,169
Salted fish	1,659,670 3,00,605
Betelnuts	1,008 141	18,013 3,543	...	60,767 7,608
Pepper	233,149 85,144	...	8,260 2,801	...	116,108 41,220	...	2,114,444 7,63,612
Cardamoms	364 364	745 821	...	16,923 24,616
Ginger	3,920 735	84,855 19,190	...	1,792,811 4,16,633
Turmeric	1,345 20,726	...	18,674 2,44,474
Sugar	16,064 1,23,809	...	41,043 3,03,195
Wood	74 4,392	6,281 2,16,309	...	9,256 3,57,533
Sundries	36,378	2,56,744	...	35,56,576
Grand Total for 1900-1901	1,35,55,203
Do. 1899-1900	1,43,37,909
Do. 1898-1899	1,39,42,136
Do. 1897-1898	1,09,21,487
Do. 1896-1897	1,02,93,609

Exports of Principal Articles from the Port of Alleppey from 1st July, 1900, to 30th June, 1901.

ARTICLES.	Europe.		America.		Ceylon.		Madras.		Bengal.	
	Quantity.	Value.	Quantity.	Value.	Quantity.	Value.	Quantity.	Value.	Quantity.	Value.
		RS.		RS.		RS.		RS.		RS.
Cocoanut oil ... cwts.
Other oils ... "	2	14
Coir yarn ... "	15,300	1,37,704	28,245	2,53,359	1,854	16,684	97	885	41,424	3,77,401
Do. rope ... "	51	511	36	360
Do. fibre ... "	782	6,763	9	60	40	284
Do. matting ... yds.	2,750	1,100	458,000	22,900	200	100	114,050	54,345
Tea ... lbs.	17,480	8,745	32,330	12,852	4	1
Coffee ... cwts.
Pepper ... "	719	15,101	101	2,244	308	44,716	11,768	2,56,787
Ginger ... "	200	3,000	12	177	34	514	99	1,485
Cardamoms ... "	12	2,500
Turmeric ... "	1,009	6,055	500	3,500	144	1,007
Copprah ... "	131	919	2,946	25,043
Cotton Twist ... lbs.	175,300	77,345
Cocoanuts ... Nos.
Fish and Prawns ... cwts.	7,311	21,386	158	1,956	53	159
Arrowroot ... "
Sundries ... "	...	27,845	...	4,640	...	4,593	...	5,130	...	79,494

Exports of Principal Articles from the Port of Alleppey from 1st July, 1900, to 30th June, 1901—(Continued).

ARTICLES.	Burmah.		Bombay.		Sindh.		Other Ports.		Total.	
	Quantity.	Value.	Quantity.	Value.	Quantity.	Value.	Quantity.	Value.	Quantity.	Value.
		RS.		RS.		RS.		RS.		RS.
Cocoanut oil ... cwts.	58	695	58	695
Other oils ... "	2	14
Coir yarn ... "	1,172	10,555	23,496	2,12,600	379	3,407	111,967	10,12,595
Do. rope ... "	450	4,502	537	5,373
Do. fibre ... "	66	502	22	139	919	7,748
Do. matting ... yds.	750	375	154,200	61,576	272	267	318,022	1,40,663
Tea ... lbs.	180	100	49,994	21,698
Coffee ... cwts.	21	445	21	445
Pepper ... "	436	9,768	26,063	5,90,212	1,132	25,073	1,696	398	42,223	9,44,299
Ginger ... "	17,667	2,63,662	30	454	11	159	18,053	2,69,451
Cardamoms ... "	135	36,362	147	38,862
Turmeric ... "	13,703	89,381	12	83	...	1	153,68 $\frac{1}{2}$	1,00,027
Copprah... ... "	154,821	13,20,035	14,483	1,23,119	2	15	172,383	14,69,141
Cotton Twist ... lbs.	175,300	77,345
Cocoanuts ... Nos.	198,723	5,962	34,410	1,032	17,700	531	250,833	7,525
Fish and Prawns ... cwts.	2,953	8,571	595	20,493	14	320	11,084	52,885
Arrowroot ... "	838	1,676	838	1,676
Sundries ... "	...	2,366	...	1,05,251	...	4,426	...	5,893	...	2,39,638
Total for 1900-1901	43,91,080
Total for 1899-1900	42,60,687
Total for 1898-1899	45,10,018
Total for 1897-1898	37,90,781
Total for 1896-1897	39,32,311

Alleppey Export Distribution from 1st July, 1900, to 30th June, 1901.

COUNTRIES.	Cocoanut Oil.		Other Oils.		Coir Yarn.		Coir Rope.	
	Cwts.	Rs.	Cwts.	Rs.	Cwts.	Rs.	Cwts.	Rs.
United Kingdom	9,382	84,416
America	28,245	2,53,359
Germany	1,868	16,810
France	546	4,925
Belgium	3,092	27,842
Austria	275	2,475
Italy	137	1,237
Australia	379	3,407
Africa
Straits
Ceylon	1,854	16,684
Burma	1,172	10,555
Calcutta	41,424	3,77,401	36	360
Bombay	9	79	23,496	2,12,600	450	4,502
Karachi
Madras	3	29	50	502
Other Indian Ports	58	695	2	14	94	855	1	9
Total for 1900-1901 ...	58	...	11	93	111,967	10,12,595	537	5,373
Do. 1899-1900	46	373	113,657	10,24,549	1,880	18,428

Alleppey Export Distribution from 1st July, 1900, to 30th June, 1901—(Continued).

COUNTRIES.	Coir Fibre.		Coir Matting.		Tea.		Coffee.	
	Cwts.	Rs.	Yards.	Rs.	lbs.	Rs.	Cwts.	Rs.
United Kingdom	2,750	1,100	17,480	8,745
America	782	6,763	45,800	22,900
Germany
France
Belgium
Austria
Italy
Australia
Africa	72	167
Straits	200	100
Ceylon	32,330	12,852
Burma	66	502	750	375
Calcutta	40	284	114,050	54,345	4	1
Bombay	22	139	154,200	61,576	180	100	21	445
Karachi
Madras	9	60	150	75
Other Indian Ports	50	25
Total for 1900-1901	919	7,748	318,022	1,40,663	49,994	21,698	21	445
Do. 1899-1900	100	707	357,100	1,68,869	4,480	2,240	81	1,621

Alleppey Export Distribution from 1st July, 1900, to 30th June, 1901—(Continued).

COUNTRIES.	Pepper.		Ginger.		Cardamoms.		Turmeric.		Copprah.	
	Cwts.	Rs.	Cwts.	Rs.	Cwts.	Rs.	Cwts.	Rs.	Cwts.	Rs.
United Kingdom...	584	13,077	200	3,000	1,009	6,055	131	919
America	500	3,500
Germany ...	75	1,680
France
Belgium
Austria ...	60	344
Italy
Australia
Africa
Straits
Ceylon ...	101	2,244	12	177
Burma ...	436	9,768
Calcutta ...	11,768	2,56,787	99	1,485	12	2,500	144	1,007
Bombay ...	26,063	5,90,212	17,667	2,63,662	135	36,362	13,703	89,381	154,821	13,20,045
Karachi ...	1,132	25,073	30	454	12	83	14,483	1,23,119
Madras ...	137	3,064
Other Indian Ports ...	1,867	42,050	45	673	1	2,948	25,058
Total for 1900-1901 ...	42,223	9,44,299	18,053	2,69,451	147	38,862	15,368	1,00,027	172,383	14,69,141
Do. 1899-1900 ...	40,286	8,92,522	19,445	2,92,601	141	29,097	8,278	51,084	170,696	14,52,389

Alleppey Export Distribution from 1st July, 1900, to 30th June, 1901—(Continued).

COUNTRIES.	Cotton Twist.		Cocoanuts.		Fish and Prawns.		Arrowroot.	
	lbs.	Rs.	Nos.	Rs.	Cwts.	Rs.	Cwts.	Rs.
United Kingdom
America
Germany
France
Belgium
Austria
Italy
Australia
Africa
Straits
Ceylon	14	320
Burma	7,311	21,386
Calcutta	2,953	8,571
Bombay	53	159
Karachi	198,723	5,962	595	20,493	838	1,676
Madras	34,410	1,032
Other Indian Ports	49	912
	171,100	75,330	17,700	531	109	1,044
Total for 1900-1901	175,300	77,345	250,833	7,525	11,084	52,885	838	1,676
Do. 1899-1900	41,341	36,362	90,700	2,721	17,850	80,445	770	1,540

Imports of Principal Articles to the Port of Alleppey from 1st July, 1900, to 30th June, 1901.

ARTICLES.	Europe.		Ceylon.		Madras.		Bengal.	
	Quantity.	Value.	Quantity.	Value.	Quantity.	Value.	Quantity.	Value.
Apparel		RS. 2,016		RS. 1,271				150
Arms and ammunition				652				
Books and printed matter		2,761		4,936				1,504
Building and engineering materials		3,754		150				
Cabinetware and furniture		1,314		128				
Clocks and watches		3,304						
Cotton piece-goods		247		284				500
Do. raw	cwts.							
Do. twist and yarn	lbs.	410	205	100	50			
Drugs and medicines		11,069		208				
Earthenware and porcelain		489		482				
Fruits and vegetables								
Glass and glassware		1,076						
Grain and pulse, rice	cwts.						3,924	23,080
Do. paddy	"							
Do. other sorts	"							
Hardware and cutlery		3,740		4,243		578		1,581
Instruments and apparatus		4,860		900				100
Jute manufactures				140				21,760
Leather do.		1,050						
Liquors, ale, beer, &c.	gals.	287	1,305	84	1,359			
Do. spirits	"	5	90					
Do. wines	"	759	4,420	244	836		4	
Machinery and millwork		18,494		1,100		320		
Matches		2,031						
Metals	cwts.	1,218	10,095	5	191			

Imports of Principal Articles to the Port of Alleppey from 1st July, 1900, to 30th June, 1901—(Continued).

ARTICLES.	Europe.		Ceylon.		Madras.		Bengal.	
	Quantity.	Value.	Quantity.	Value.	Quantity.	Value.	Quantity.	Value.
		RS.		RS.		RS.		RS.
Oils gals.	258	262	105	486
Opium lbs.
Paints and colours	450	...	12
Paper and pasteboard	57	...	608	...	250	...	2,900
Perfumery	200
Pitch, tar and dammer	305	15
Provisions	13,456	...	954
Salt l. mds.	14	47	2	8
Seeds	5
Soap lbs.	23,520	2,126
Spices "	448	28
Stationery	386	150
Sugar cwts.
Sundries	8,160	...	4,240	...	1,500	...	1,743
Tiles
Tobacco lbs.	972,655	4,89,871
Toys	768	...	489
Umbrellas No.	60	88	5	10
Wool manufactures	2,375	42

Imports of Principal Articles to the Port of Alleppey from 1st July, 1900, to 30th June, 1901—(Continued).

ARTICLES.	Burmah.		Bombay.		Other Ports.		Total.	
	Quantity.	Value.	Quantity.	Value.	Quantity.	Value.	Quantity.	Value.
		RS.		RS.		RS.		RS.
Apparel				1,980		1,050		6,467
Arms and ammunition				18,197				18,849
Books and printed matter				1,425				10,626
Building and engineering materials				700				4,604
Cabinetware and furniture				495				1,937
Clocks and watches				550				3,854
Cotton piece-goods				7,19,050				7,20,081
Do. raw cwts.			1,676	62,660	600	20,160	2,276	82,820
Do. twist and yarn lbs.			200	125			710	380
Drugs and medicines				5,619				16,896
Earthenware and porcelain		281		1,005		1,783		4,040
Fruits and vegetables				684		63		747
Glass and glassware		100		2,846				4,022
Grain and pulse, rice cwts.	15,102	74,889	178	1,071	4	30	19,208	99,070
Do. paddy "	114,577	3,82,562	3,795	12,650			118,372	3,95,212
Do. other sorts "			1,135	8,828	204	1,735	1,339	10,563
Hardware and cutlery				8,901		15		19,043
Instruments and apparatus				76				5,936
Jute manufactures				19,109		350		41,359
Leather do.				710				1,760
Liquors, ale, beer, &c. gals.			6,406	7,626			6,777	10,290
Do. spirits "			638	6,470	1,177	750	1,820	7,310
Do. wines "			543	7,910			1,546	13,170
Machinery and millwork				6,600		20		26,534
Matches				336				2,367
Metals cwts.			2,250	73,050	24	266	3,497	83,602

Imports of Principal Articles to the Port of Alleppey from 1st July, 1900, to 30th June, 1901—(Continued).

ARTICLES.	Burmah.		Bombay.		Other Ports.		Total.	
	Quantity.	Value.	Quantity.	Value.	Quantity.	Value.	Quantity.	Value.
		RS.		RS.		RS.		RS.
Oils gals.	37,407	26,302	37,770	27,050
Opium lbs.	3,360	29,940	3,360	29,940
Paints and colours	1,264	1,726
Paper and pasteboard	5,299	9,114
Perfumery	765	965
Pitch, tar and dammer	665	975
Provisions	2,553	...	9,120	...	26,083
Salt I. mds.	289,361	1,35,048	289,377	1,35,103
Seeds	2,952	...	4,629	...	7,586
Soap lbs.	1,809	1,058	25,329	3,184
Spices "	2,204	586	2,652	614
Stationery	1,005	1,541
Sugar cwts.	101	1,403	101	1,403
Sundries		51	...	15,967	...	1,950	...	33,611
Tiles	1,587	1,587
Tobacco lbs.	196	307	344,990	1,33,022	1,317,841	6,23,700
Toys	1,257
Umbrellas No.	12,954	14,569	13,019	14,667
Wool manufactures	2,417
Total for 1900-1901	25,14,062
Do. 1899-1900	22,94,151
Do. 1898-1899	17,27,006
Do. 1897-1898	18,34,662

Exports from the Port of Mangalore from 1st July, 1900, to 30th June, 1901.

ARTICLES.	Europe.		America.		Ceylon.		Madras.		Bombay.	
	Quantity.	Value.	Quantity.	Value.	Quantity.	Value.	Quantity.	Value.	Quantity.	Value.
Apparel val.	..	RS. 2,440	...	RS.	RS. 1,126	...	RS. 13,639	...	RS. 6,456
Arms and ammunition. „	...	550	150
Books and printed matter ...	4	384	248	20,481	97	9,395
Bricks and tiles ... No.	1,166,570	41,072	3,632,487	1,10,266	4,939,336	1,56,677
Other sorts ... val.	3,117	...	715
Candles ... lbs.	952	393	140	80
Cabinetware ... val.	2,842	...	642
Chemicals... .. „	420	...	32
Coffee cwt.	130,249	58,63,208	301	10,962	5,906	2,16,033	3,681	92,800
Coir yarn „	lbs. 35	4	42	342	170	1,526
Cotton, twist and yarn. lbs.	51,228	21,285	5,089	1,602
„ piece-goods ... yds.	1,394	932	89,159	22,204	54,110	21,281
Drugs and medicines... val.	...	1,470	9,160	...	854
Dyeing & colouring materials cwt.	64	497	121	1,127
Earthenware ... val.	2,340	...	260
Cocoanuts ... No.	6,400	246	931,750	17,255
Copprah ... cwt.	5,036	70,401
Other sorts ... val.	176	...	9,268	...	2,296
Glass and glassware... „	...	150	1,005	...	4,948
Grain and pulse, rice.. cwt.	8	40	174,115	8,92,641	3,906	27,517
„ other sorts ... „	11,236	44 131	1,909	5,608
Hardware and cutlery.. val.	...	350	50	...	14,565	...	4,411
Hides and skins ... cwt.	410	9,632	1,791	37,068
Horns „	16	1,105	36	875	778	15,779
Jewellery val.	...	20
Jute, gunnies ... No.	32,586	4,604	4,219	957
Liquors, wine ... gals.	384	2,220	82	741
Machinery val.	...	400	80	...	400
Mats sq. yds.	142,851	3,396	3,188	501
Manures tons	94	3,888	106	3,492	25	827

Exports from the Port of Mangalore from 1st July, 1900, to 30th June, 1901—(Continued).

ARTICLES.	Europe.		America.		Ceylon:		Madras.		Bombay.	
	Quantity.	Value.	Quantity.	Value.	Quantity.	Value.	Quantity.	Value.	Quantity.	Value.
		RS.		RS.		RS.		RS.		RS.
Metals ... cwt.	40	1,400	2,303	27,039	354	8,775
Oil, coconut ... gals.	3,161	3,999	4,722	5,739
„ kerosine ... „	45,820	23,034	1,944	896
„ other sorts ... „	2,477	5,132	1,166	15,941
Provisions ... lbs.	40,865	6,342	3,110,080	2,18,347	264,051	17,546	261,273	37,539
Salt I. mds.	28,079	85,208	817	2,410
Seeds ... cwt.	lbs.10	5	15	110	3,041	24,795	546	4,403
Shells and cowries ... val.	...	1,550	350	...	2,520
Oil-cake ... cwt.	798	2,874	8	23
Spices, betelnuts ... lbs.	269,987	11,607	3,418,089	4,93,128
Do. cardamoms ... „	5,595	15,857	3,883	4,389	27,201	46,890
Do. ginger ... „	53	3	4,503	801	1,211	162
Do. pepper ... „	98,690	35,527	14,000	5,625	149,882	48,883	99,240	34,414
Do. chillies ... „	189	25	173,831	23,754	19,075	2,638
Do. other sorts ... „	922	165	27,020	2,147
Sugar refined ... cwt.	1,349	18,095	488	5,355
Do. unrefined (jaggery) „	3,080	19,041	613	3,453
Tobacco ... lbs.	1,913	1,204	188,860	35,144	12,542	3,971
Wood and manufactures. val.	...	79,524	...	4,745	96,438	...	36,551
Sundries ... „	...	4,987	962	...	1,29,648	...	40,439

Exports from the Port of Mangalore from 1st July, 1900, to 30th June, 1901—(Continued).

ARTICLES.	Bengal.		Burmah.		Other Ports.		Total.	
	Quantity.	Value.	Quantity.	Value.	Quantity.	Value.	Quantity.	Value.
		RS.		RS.		RS.		RS.
Apparel ... val.	16	...	23,677
Arms and ammunition ... "	800
Books and printed matter ... cwt.	8	415	357	30,675
Bricks and tiles ... No.	230,150	8,800	1,130,154	36,778	11,098,697	3,53,593
Other sorts ... val.	3	...	13	...	3,848
Candles ... lbs.	1,092	473
Cabinetware ... val.	9	...	3,493
Chemicals ... "	452
Coffee ... cwt.	144	5,730	234	10,534	3 606	1,24,544	144,121	63,23,811
Coir yarn ... "	3,030	32,337	141	955	3,383	35,164
Cotton, twist and yarn ... lbs.	56,317	22,887
Do. piece-goods ... yds.	3,311	2,112	147,974	46,529
Drugs and medicines... val.	38	...	11,522
Dyeing & colouring materials ... cwt.	763	12,139	948	13,763
Earthenware ... val.	228	...	2,828
Cocoanuts ... No.	22,900	691	961,050	18,192
Copprah ... cwt.	1,084	14,475	6,120	84,876
Other sorts ... val.	566	...	12,306
Glass and glassware ... "	6,103
Grain and pulse, rice ... cwt.	17,804	1,00,072	195,833	10,20,270
Do. other sorts ... "	236	675	13,381	50,414
Hardware and cutlery ... val.	19,376
Hides and skins ... cwt.	2,201	46,700
Horns ... "	830	17,759
Jewellery ... val.	20
Jute, gunnies ... No.	36,805	5,561
Liquors, wine ... gals.	466	2,961
Machinery ... val.	880
Mats ... sq. yds.	146,039	3,897
Manures ... tons	225	8,207

Exports from the Port of Mangalore from 1st July, 1900, to 30th June, 1901—(Continued).

ARTICLES.	Bengal.		Burmah.		Other Ports.		Total.	
	Quantity.	Value.	Quantity.	Value.	Quantity.	Value.	Quantity.	Value.
		RS.		RS.		RS.		RS.
Metals ... cwt.	1	39	2,698	37,293
Oil, cocoanut ... gals.	40	58	7,923	9,796
" kerosine ... "	47,764	23,930
" other sorts ... "	25	539	3,668	21,612
Provisions ... lbs.	952	255	336,588	22,910	4,013,809	3,02,939
Salt ... I. mds.	28,896	87,618
Seeds ... cwt.	3	32	3,605	29,345
Shells and cowries ... val.	4,420
Oilcake ... cwt.	806	2,897
Spices, betelnuts ... lbs.	2,580,538	3,43,851	6,268,614	8,48,586
Do. cardamoms ... "	3,503	5,312	40,182	72,448
Do. ginger ... "	5,767	966
Do. pepper ... "	61,493	19,859	423,305	1,44,308
Do. chillies ... "	700	97	193,795	26,514
Do. other sorts ... "	504	164	28,446	2,476
Sugar refined ... cwt.	1,837	23,450
Do. unrefined (jaggery) ... "	19	151	3,712	22,645
Tobacco ... lbs.	84	21	203,399	40,340
Wood and manufactures ... val.	2,303	...	2,19,561
Sundries ... "	...	5,760	10,627	...	1,92,423
Total for 1900-1901	1,02,84,604
Do. 1899-1900	86,43,019
Do. 1898-1899	1,09,51,915
Do. 1897-1898	77,37,400
Do. 1896-1897	94,56,469

Imports into the Port of Mangalore from 1st July, 1900, to 30th June, 1901.

ARTICLES.	Europe.		America.		Ceylon.		Madras.		Bengal.	
	Quantity.	Value.	Quantity.	Value.	Quantity.	Value.	Quantity.	Value.	Quantity.	Value.
Arms and ammunitions	...	RS. 547	...	RS.	RS.	RS. 3,589	...	RS. ...
Apparel	...	4,748	1,284	...	9,348
Books and printed matter	cwt. 30	2,836	70	107	66	4,552	lbs. 14	10
Building and engineering materials	...	7,200	2,123
Cabinetware	...	120	6,937
Canes and rattans	10,167	7,253
Candles	lbs. 4,480	1,702
Carriages and carts	...	1,102	1,978
Chemicals	...	6,022	4,836	...	1,349
Coal	tons	40	690	789	12,375
Coffee	cwt.	281	10,054
Coir yarn	4,814	19,591
Cotton, twist and yarn	lbs. 13,046	12,009	4,000	2,995	22,748	8,495
Do. pi-cc-goods	yds. 32,328	6,318	1,568	465	1,036,669	2,66,987
Drugs and medicines	...	2,206	230	...	1,982	...	107
Dyeing and colouring materials	cwt.	1,071	18,228
Fruits and vegetables, cocoannts	No.	1,281,968	36,727
Do. copprah	cwt.	6,948	69,894
Do. other sorts	7,293	...	200
Glassware	...	6,913	1,108	...	365
Grain and pulse, rice	cwt.	10,540	50,658	7,984	45,590
Do. other sorts	19,320	84,521	5,092	23,135
Hardware and cutlery	...	26,048	4,689	...	5,351	...	9,804
Hides and skins	cwt. lbs. 3	16	370	6,876
Horns	287	4,179
Jewellery	...	25
Jute and gunnies	No.	64,419	13,070	129,500	37,512
Liquors, spirits	gals. 476	4,763	96	785	28,285	2,02,639
Do. wines	...	2,049	3,829	...	45	105	47	759
Do. other sorts	23	104

Imports into the Port of Mangalore from 1st July, 1900, to 30th June, 1901—(Continued).

ARTICLES.	Europe.		America.		Cey.on.		Madras.		Bengal.	
	Quantity.	Value.	Quantity.	Value.	Quantity.	Value.	Quantity.	Value	Quantity.	Value.
		RS.		RS.		RS.		RS.		RS.
Machinery	...	8,744	...	1,777	...	909	...	1,703
Manure	tons	74	7,564	6	774	2,148	76,664	...
Matches	700
Mats	yds.	614,133	16,613
Metals	cwt.	2,391	23,322	50	529	68	3,218	398
Oils, kerosine	gals.	13,218	5,014	...
Do. other sorts	„	653	952	240	276	124,068	1,40,060	...
Oil cakes	cwt.	21,303	59,576	73
Paints and colours	1,161	75	...	77
Perfumery	54
Provisions	lbs.	20,357	10,231	10,981	4,476	2,366,924	1,09,286	...
Salt	I. mds.	12	80	16,496	3,408	...
Seeds	cwt.	3	85	384	2,325	721
Silk, piece-goods	yds.	240	460	...
Soap	cwt.	620	7,744	6	353	lbs. 36	24	lbs. 28
Spices	lbs.	80	143	819,112	1,16,643	307
Sugar	cwt.	10	244	13	297	5,176	49,266	2
Tea	lbs.	2,587	1,403	7,394	5,577	296
Tobaccos	...	60	335	295,863	74,462	14,342
Umbrellas	No.	8,254	9,396	5	13	51	51	...
Wood	1,967	44,430
Wool, piece-goods	yds.	2,261	2,224
Sundries	22,936	1,447	...	31,996	...

Imports into the Port of Mangalore from 1st July, 1900, to 30th June, 1901—(Continued).

ARTICLES.	Bombay.		Burmah.		Other Ports.		Total.	
	Quantity.	Value.	Quantity.	Value.	Quantity.	Value.	Quantity.	Value.
		RS.		RS.		RS.		RS.
Arms and ammunitions	...	80	4,216
Apparel	...	72,108	20	...	87,508
Books and printed matter	cwt. 98	3,172	264	10,677
Building and engineering materials	...	4,681	620	...	14,624
Cabinetware	...	794	7,851
Canes and rattans	cwt. 14	320	10,181	7,573
Candles	lbs. 2,487	949	6,967	2,651
Carriages and carts	...	1,227	4,307
Chemicals	...	8,638	20,846
Coal	tons 933	19,786	142	3,932	1,904	36,783
Coffee	cwt. 4,255	1,18,921	4,536	1,28,975
Coir yarn	lbs. 56	3	4,814	19,594
Cotton, twist and yarn	lbs. 167,071	74,822	2,100	800	208,965	99,121
Do. piece-goods	yds. 1,344,324	2,48,554	112	56	2,415,001	5,22,380
Drugs and medicines	...	19,270	23,795
Dyeing and colouring materials	cwt. 54	1,080	1,125	19,308
Fruits and vegetables, cocoanuts	No. 12,075	363	25,062	780	1,319,105	37,870
Do. coprah	cwt.	6,948	69,894
Do. other sorts	...	7,872	6,037	...	21,402
Glassware	...	26,773	35,159
Grain and pulse, rice	cwt. 15,157	24,807	3,839	12,040	37,520	1,33,095
Do. other sorts	.. 19,828	1,17,861	93	656	44,332	2,26,173
Hardware and cutlery	...	61,853	1,07,745
Hides and skins	cwt. 21	704	391	7,596
Horns	lbs. 28	2	287	4,181
Jewellery	25
Jute and gunnies	No. 116,326	28,439	310,245	79,021
Liquors, spirits	gals. 1,636	19,228	30,493	2,27,415
Do. wines	.. 1,151	8,549	140	281	13,425	13,523
Do. other sorts	.. 1,048	4,770	1,071	4,874
Machinery	...	702	13,835
Manure	tons 211	8,991	30	827	2,469	94,820

Imports into the Port of Mangalore from 1st July, 1900, to 30th June, 1901—(Continued).

ARTICLES.	Bombay.		Burmah.		Other Ports.		Total.	
	Quantity.	Value.	Quantity.	Value.	Quantity.	Value.	Quantity.	Value.
		RS.		RS.		RS.		RS.
Matches	...	10,431	11,131
Mats	... yds.	8,578 417	3,101	335	625,812	17,365
Metals	... cwt.	5,804 84,391	8,711	1,13,711
Oils, kerosine	... gals.	378,083 1,87,692	391,301	1,92,706
Do. other sorts	...	5,078 5,775	1,499	1,361	131,512	1,48,424
Oil cakes	... cwt.	4,300 9,419	900	1,410	26,576	70,555
Paints and colours	...	2,490	3,803
Perfumery	...	1,673	1,804	...	3,531
Provisions	... lbs.	706,265 57,578	1,693,762	49,750	4,798,189	2,31,321
Salt	... l. mds.	11,896 5,01,464	28,404	5,04,952
Seeds	... cwt.	2,791 27,221	3,899	34,483
Silk, piece-goods	... yds.	1,626 5,183	1,866	5,643
Soap	... cwt.	521 8,281	1,147	16,412
Spices	... lbs.	674,249 1,05,893	1,493,748	2,22,731
Sugar	... cwt.	8,060 1,00,659	13,261	1,50,494
Tea	... lbs.	588 401	10,865	7,529
Tobaccos	...	9,600 2,177	319,865	79,114
Umbrellas	... No.	17,628 20,731	25,938	30,191
Wood	...	2,161	48,558
Wool, piece-goods	... yds.	425 305	2,686	2,529
Sundries	...	97,416	1,077	...	1,59,602
Total for 1900-1901	41,41,622
Do. 1899-1900	40,47,625
Do. 1898-1899	41,45,751
Do. 1897-1898	50,44,774
Do. 1896-1897	44,38,838

Exports from the Port of Tellicherry from 1st July, 1900, to 30th June, 1901.

ARTICLES.	Europe.		America.		Ceylon.		Madras.		Bombay.	
	Quantity.	Value.	Quantity.	Value.	Quantity.	Value.	Quantity.	Value.	Quantity.	Value.
		RS.		RS.		RS.		RS.		RS.
Apparel	2,380	78	...	2,474	...	13
Wax cwt.	1	105	12	995	5	323	31	2,152
Cocoanuts No.	17,035	508	1,550,760	38,059
Coffee cwt.	75,998	37,64,863	251	12,525	1,541	45,633	1,030	42,221	386	10,626
Coprah "	17,780	1,80,875	6,186	59,258	138	1,315
Cotton piece-goods	2,039	...	23,137	...	464
Coir manufactures cwt.	5	50
Drugs and medicines	3,875	19,381
Fish, dried lbs.	3,081,766	2,32,860	320,780	13,829	13,741	2,438
Grain and pulse, rice and paddy cwt.	1	7	20,388	99,024	757	3,330
Do. other sorts "	1,396	7,032	7	35
Gunnies No.	159,212	25,313	703	105
Oils gals.	22,249	13,148	12,603	13,460
Provisions cwt.	90	2,405	810	6,712	235	13,726
Seeds	2,047	15,207	2	20
Spices, betelnuts lbs.	42,032	1,954	141,631	14,009
Do. cardamoms cwt.	35	6,999	27	4,549	19	2,350
Do. pepper lbs.	6,808,778	23,83,376	313,600	1,11,500	6,720	2,400	169,517	60,135	133,711	47,456
Wood manufactures	440
Sundries	2,65,765	...	59,820	...	565	...	96,524	...	18,188
										...

Exports from the Port of Tellicherry from 1st July, 1900, to 30th June, 1901—(Continued).

ARTICLES.	Bengal.		Burmah.		Other Ports.		Total.	
	Quantity.	Value.	Quantity.	Value.	Quantity.	Value.	Quantity.	Value.
Apparel	...	RS.	...	RS.	...	RS.	...	RS.
Wax	4,945
Wax	cwt.	49	3,575
Cocoanuts	No.	...	10,000	250	305,000	7,965	1,882,795	46,782
Coffee	cwt.	89	3,113	35	1,234	2,082	1,03,206	81,412
Copprah	"	24,104
Cotton piece-goods	25,640
Coir manufactures	cwt.	26	260	31	310
Drugs and medicines	23,256
Fish, dried	lbs.	1,904	180	16,240	3,550	...	3,434,431	2,52,857
Grain and pulse, rice and paddy	cwt.	21,146
Do. other sorts	"	1,4 3
Gunnies	No.	159,915	25,418
Oils	gals.	1,352	1,887	36,204	28,495
Provisions	cwt.	16	174	76	1,870	29	1,000	1,256
Seeds	"	2,049
Spices, betelnuts	lbs.	4,277	381	187,940	16,344
Do. cardamoms	cwt.	39	2,220	120
Do. pepper	lbs.	2,604,112	9,20,277	297,520	1,06,847	10,333,958
Wood manufactures	440
Sundries	175	30,702	4,71,739
Total for 1900-1901	89,23,324
Do. 1899-1900	65,29,946
Do. 1898-1899	91,89,718
Do. 1897-1898	55,78,451
Do. 1896-1897	65 65,405

Imports into the Port of Tellicherry from 1st July, 1900, to 30th June, 1901.

ARTICLES.	Europe.		Ceylon.		Madras.		Bengal.	
	Quantity.	Value.	Quantity.	Value.	Quantity.	Value.	Quantity.	Value.
		RS.		RS.		RS.		RS.
Apparel				6,676		2,418		1,900
Betelnuts cwt.			30	216	601	2,864		
Cardamoms					39	5,369		
Coffee					29,284	14,40,615		
Copprah					8,743	87,559		
Cotton manufactures		14,010		120		2,553		700
Coir cwt.					195	1,304		
Drugs and medicines		1,404				3,501		767
Fish cwt.					6,690	36,820		
Grain and pulse, rice and paddy					68,791	3,34,843	76,009	4,22,969
Do. other sorts					6,213	26,124	8,229	36,190
Gunnies No.					96,134	18,233	80,300	21,773
Manures cwt.	100	413			17,540	41,719		
Metals	197	3,219	79	981	85	4,064	5	320
Oils gals.	1,360	1,360	8	10	6,804	7,715	87	35
Pepper cwt.					15,435	5,81,871		
Provisions	6	267	3	41	1,258	26,057		
Salt I. mds.					35,634	13,205		
Seeds cwt.					1,110	8,551	1,455	9,569
Tobacco	2	330			2,870	39,642	112	2,265
Wood manufactures		25				710		
Sundries		6,14,359		6,481		3,62,811		4,959

Imports into the Port of Tellicherry from 1st July, 1900, to 30th June, 1901—(Continued).

ARTICLES.	Bombay.		Burmah.		Other Ports.		Total.	
	Quantity.	Value.	Quantity.	Value.	Quantity.	Value.	Quantity.	Value.
Apparel	RS. 10,360	...	RS.	...	RS.	...	RS. 21,354
Betelnuts cwt.	631	3,080
Cardamoms "	39	5,369
Coffee "	29,284	14,40,615
Copprah "	2,946	25,043	11,689	1,12,602
Cotton manufactures	1,36,528	1,53,911
Coir cwt.	195	1,304
Drugs and medicines	6,409	12,081
Fish cwt.	270	2,180	380	3,549	7,340	42,549
Grain and pulse, rice and paddy	4,081	17,253	108,754	3,14,994	3,941	10,866	261,576	11,00,925
Do. other sorts	14,638	77,103	29,080	1,39,417
Gunnies No.	3,616	815	3,000	490	183,050	41,311
Manures cwt.	17,640	42,132
Metals "	1,665	17,213	2,031	25,797
Oils gals.	245,071	1,23,837	253,330	1,32,957
Pepper cwt.	2,094	57,358	17,529	6,39,229
Provisions "	458	7,942	4,990	21,830	6,715	56,137
Salt I. mds.	58,474	1,83,131	94,108	1,96,336
Seeds cwt.	2,305	13,910	4,870	32,030
Tobacco "	1	150	3	40	2,988	42,427
Wood manufactures	158	893
Sundries	2,07,814	...	50	...	2,774	...	11,99,248
Total for 1900-1901	54,41,704
Do. 1899-1900	41,32,078
Do. 1898-1899	57,55,362
Do. 1897-1898	31,63,484
Do, 1896-1897	35,60,537

Exports from the Port of Cannanore from 1st July, 1900, to 30th June, 1901.

ARTICLES.	Europe.		America.		Ceylon.		Madras.		Bombay.	
	Quantity.	Value.	Quantity.	Value.	Quantity.	Value.	Quantity.	Value.	Quantity.	Value.
		RS.		RS.		RS.		RS.		RS.
Apparel		214				7,944		1,372		3,314
Canes and rattans ... cwt.							39	23	8	6
Cocoanuts No.							31,500	824	1,659,830	36,582
Copprah cwt.							112	1,148	304	3,185
Coir yarn					8	30	784	5,662	194	1,238
Cotton piece-goods ... yds.	166	104			57,018	37,263	33,265	7,511	8,442	1,572
Do. twist and yarn. lbs.							17,480	6,544	3,600	1,450
Drugs								148		
Dyes cwt.									1	21
Grains							23,385	89,540	873	3,282
Hides and skins								11,538		448
Horns cwt.							8	92		
Mats sq. yds.							1,530	40	1,132	126
Oils gals.							4,385	5,350	6,686	8,283
Oil-cake cwt.							143	487	116	348
Pepper lbs.	5,075	1,722					1,155,230	3,93,750	440,929	1,49,313
Provisions—										
Fish dry lbs.					1,027,234	64,756	524,682	22,914	120	6
Other sorts ... cwt.					8	224	407	3,842	1,425	5,301
Seeds							626	4,497	11	93
Spices lbs.							67,692	7,629	279,808	29,071
Sugar cwt.							228	2,334	1	7
Tea lbs.							862	326		
Timber								5,233		
Tobacco lbs.							15,538	2,465	14,640	1,830
Vegetables								360		7
Sundries		780				18		48,799		3,889

Exports from the Port of Cannanore from 1st July, 1900, to 30th June, 1901—(Continued).

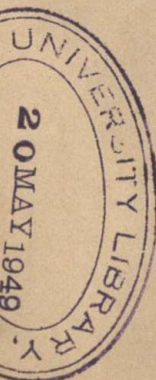
ARTICLES.	Bengal.		Burma.		Other Ports.		Total.	
	Quantity.	Value.	Quantity.	Value.	Quantity.	Value.	Quantity.	Value.
Apparel ...		RS. 1,520		RS. 719		RS. 2,495		RS. 17,578
Canes and rattans ...	cwt.	47	29
Cocoanuts ...	No.	162,400	4,527	1,853,730	41,933
Copprah ...	cwt.	416	4,333
Coir yarn	493	4,181	1,479	11,111
Cotton piece-goods ...	yds.	2,535	1,524	7,939	4,848	3,966	2,463	113,331
Do. twist and yarn ...	lbs.	21,080
Drugs	148
Dyes ...	cwt.	1
Grains	24,258
Hides and skins ...	val.	11,986
Horns ...	cwt.	8
Mats ...	sq. yds.	2,662
Oils ...	gals.	47	59	11,118
Oil-cake ...	cwt.	259
Pepper ...	lbs.	1,473,279	5,11,692	17,010	4,911	56,511	20,249	3,148,034
Provisions—								
Fish dry ...	lbs.	1,552,036
Other sorts ...	cwt.	87,676
Seeds	9,537
Spices ...	lbs.	5,496	497	637
Sugar ...	cwt.	4,590
Tea ...	lbs.	363,198
Timber	38,858
Tobacco ...	lbs.	2,341
Vegetables	229
Sundries	862
		16,629	340	...
		30,178
		4,295
		367
		72,739
Total for 1900-1901	15,65,964
Do. 1899-1900	16,85,772
Do. 1898-1899	17,80,457
Do. 1897-1898	10,38,055
Do. 1896-1897	17,71,908

Imports into the Port of Cannanore from 1st July, 1900, to 30th June, 1901.

126074
KH2281M5TY
D2

ARTICLES.	Europe.		Ceylon.		Madras.		Bengal.	
	Quantity.	Value.	Quantity.	Value.	Quantity.	Value.	Quantity.	Value.
		RS.		RS.		RS.		RS.
Apparel		98		6		2,053		30
Coffee cwt.					178	2,127		
Drugs						295		610
Glass		675		15		86		
Grains cwt.					49,962	2,17,360	34,804	1,68,024
Gunnies No.					11,405	1,885	2,000	460
Hides and skins						2,130		
Liquor and spirits gals.					7,290	10,729		
Manure tons					cwt. 4	140		
Millwork		1,779						
Molasses cwt.					16	223		
Oils gals.					66,238	63,011		
Provisions... .. lbs.	109	289	11	3	784,456	27,004		
Salt tons					171	785		
Spices lbs.			1,120	2,000	364,957	47,270		
Seeds cwt.					731	5,452	514	3,730
Tobacco lbs.					980,327	1,20,628	19,729	3,165
Wood manufactures		25				1,744		29
Sundries		71,494		1,777		1,68,297		9,968

59



Imports into the Port of Cannanore from 1st July, 1900, to 30th June, 1901—(Continued).

ARTICLES.	Bombay.		Burmah.		Other Ports.		Total.	
	Quantity.	Value.	Quantity.	Value.	Quantity.	Value.	Quantity.	Value.
		RS.		RS.		RS.		RS.
Apparel	15,757	17,944
Coffee cwt.	178	2,127
Drugs	2,347	3,252
Glass	8,928	9,704
Grains cwt.	83,818	1,36,902	196,280	5,63,612	3,036	7,643	367,900	10,93,541
Gunnies No.	536	96	13,941	2,441
Hides and skins	2,130
Liquor and spirits gals.	977	9,043	8,267	19,772
Manure tons	cwt.4	140
Millwork "	...	500	2,279
Molasses cwt.	1,393	16,461	1,409	16,684
Oils gals.	59,243	30,050	125,511	93,061
Provisions lbs.	234,685	23,661	484,635	22,663	1,503,806	73,620
Salt tons	2,563	2,13,956	2,734	2,14,749
Spices lbs.	34,650	6,592	400,727	55,862
Seeds cwt.	1,908	14,961	3,153	24,143
Tobacco lbs.	1,092	1,114	1,001,148	1,24,907
Wood manufactures	612	2,410
Sundries	6,52,779	...	440	...	375	...	9,05,130
Total for 1900-1901	26,63,888
Do. 1899-1900	30,35,727
Do. 1898-1899	26,78,679
Do. 1897-1898	30,12,217
Do. 1896-1897	16,78,090

Exports from the Port of Badagara from 1st July, 1900, to 30th June, 1901.

ARTICLES.	Europe.		Madras.		Bombay.		Other Ports.		Total.	
	Quantity.	Value.	Quantity.	Value.	Quantity.	Value.	Quantity.	Value.	Quantity.	Value.
		RS.		RS.		RS.		RS.		RS.
Canes and rattans ... cwt.	1,425	1,430	25	308	376	418	1,826	2,156
Cocoanuts ... No.	1,000	30	12,981,330	3,24,940	48,000	1,338	13,030,330	3,26,308
Copprah ... cwt.	17,327	1,80,627	30,092	2,82,136	66,132	6,39,398	113,551	11,02,161
Coir yarn ... "	8	47	24	119	32	166
Grains ... "	2,150	9,435	59	205	2,209	9,640
Oils ... gals.	9,368	10,770	22,746	25,244	32,114	36,014
Provisions ... lbs.	202,790	9,054	112	6	202,902	9,060
Seeds ... cwt.	45	321	45	321
Spices—pepper ... lbs.	227,180	75,108	116,768	41,703	343,948	1,16,811
Other sorts ... "	19,816	2,520	19,816	2,520
Sugar ... cwt.	177	1,753	177	1,753
Timber ... "	32,174	...	5,401	19,390	56,965
Tobacco ... lbs.	53,732	4,318	53,732	4,318
Sundries ... "	16,969	...	9,786	...	37	...	26,792
Total for 1900-1901	16,94,985
Do. 1899-1900	18,25,711
Do. 1898-1899	14,09,255
Do. 1897-1898	34,69,963
Do. 1896-1897	13,84,247

Imports into the Port of Badagara from 1st July, 1900, to 30th June, 1901.

ARTICLES.	Madras.		Bengal.		Bombay		Burmah.		Other Ports.		Total.	
	Quantity.	Value.	Quantity.	Value.	Quantity.	Value.	Quantity.	Value.	Quantity.	Value.	Quantity.	Value.
		RS.		RS.		RS.		RS.		RS.		RS.
Drugs						279						279
Grains ... cwt.	69,879	3,01,350	122,110	6,83,503	72,147	2,21,166	11,294	34,769			275,430	12,40,788
Gunnies ... No.	44,875	6,701	2,500	875	4,900	556					52,275	8,132
Provisions ... lbs.	1,274	117	56	15	784	174			57,182	5,048	59,296	5,354
Salt ... tons	117	4,325			1,179	1,00,929					1,296	1,05,254
Spices ... lbs.	1,008	144									1,008	144
Seeds ... cwt.	18	171	59	384	325	2,911					402	3,466
Tobacco ... lbs.			1,559	210							1,559	210
Wood manufactures ...		63				555						618
Sundries ...		55,533		1,992		15,583						73,108
Total for 1900-1901 ...												14,37,353
Do. 1899-1900 ...												13,99,251
Do. 1898-1899 ...												11,18,313
Do. 1897-1898 ...												9,40,340
Do. 1896-1897 ...												6,33,147

Exports from the Port of Beypore from 1st July, 1900, to 30th June, 1901.

ARTICLES.			Europe.		America.		Ceylon,		Madras.		Bombay.	
			Quantity.	Value.	Quantity.	Value.	Quantity	Value.	Quantity.	Value.	Quantity.	Value.
				RS.		RS.		RS.		RS.		RS.
Bricks	...	No.	517,000	18,718	123,053	4,563	107,575	4,460
Coffee	...	cwt.	29,160	13,72,136	119	4,840	149	5,984
Coir	...	"	6,085	62,063	2,036	12,300
Cocoanuts	...	No.	6,114,235	1,46,129
Hides and skins, dressed	...	cwt.	2,013	3,51,004	38	1,419
Grains	...	"	4,402	19,056	3	16
Chillies	...	lbs.	360,897	44,851
Sugar	...	cwt.	3,537	29,395
Turmeric	...	"	298	3,786
Provisions	...	lbs.	158,924	16,597	112	2
Tobacco	...	"	1,048,687	1,56,120
Tea	...	"	108,951	1,05,942	500	600	150	75	1,250	1,250
Wood	...	tons	511	17,749	393	8,684
Sundries	74,001	94,633	...	16,354

Exports from the Port of Beypore from 1st July, 1900, to 30th June, 1901—(Continued).

ARTICLES.				Bengal.		Burma.		Other Ports.		Total.	
				Quantity.	Value.	Quantity.	Value.	Quantity.	Value.	Quantity.	Value.
				RS.		RS.		RS.		RS.	
Bricks	No.	...	104,040	4,284	24,200	996	875,868	33,021	
Coffee	cwt.	37	1,487	...	100	4,000	29,565	13,88,447	
Coir	"	513	5,133	...	635	3,821	9,269	83,317	
Cocoanuts	No.	757,775	22,401	6,872,010	1,68,530	
Hides and skins, dressed	cwt.	2,051	3,52,423	...	
Grains	"	6	48	4,411	19,120	
Chillies	lbs.	19,400	2,425	380,297	47,276	
Sugar	cwt.	75	600	3,612	29,995	
Turmeric	"	298	3,786	...	
Provisions	lbs.	3,875	1,453	162,911	18,052	
Tobacco	"	1,048,687	1,56,120	
Tea	"	110,851	1,07,867	
Wood	tons	1,114	25,150	2,018	51,583	
Sundries	3,856	...	13,041	...	2,01,885	
Total for 1900-1901	26,61,422	
Do. 1899-1900	32,86,801	
Do. 1898-1899	45,65,891	
Do. 1897-1898	35,28,983	
Do. 1896-1897	38,61,140	

Imports into the Port of Beypore from 1st July, 1900, to 30th June, 1901.

ARTICLES.	Europe.		Madras.		Bombay.		Total.	
	Quantity.	Value.	Quantity.	Value.	Quantity.	Value.	Quantity.	Value.
		RS.		RS.		RS.		RS.
Cotton twist and yarn ... lbs.	145,780	53,685	145,780	53,685
Grain and pulse ... cwt.	7,233	34,316	465	2,170	7,698	36,486
Hardware and cutlery	217	...	3,253	...	3,470
Hides and skins (hides, raw) ... cwt.	765	14,761	244	4,979	1,009	19,740
Do. raw ... "	83	1,747	83	1,747
Jute gunny bags ... No.	51,725	6,956	51,725	6,956
Provisions ... lbs.	541,586	21,799	541,586	21,799
Railway materials	7,43,891	7,43,891
Salt ... tons	818	2,782	877	71,960	1,695	74,742
Spices ... lbs.	137,253	9,975	137,253	9,975
Wood manufactures	611	...	145	...	756
Sundries	7,239	...	44,818	...	948	...	53,005
Total for 1900-1901	10,26,252
Do. 1899-1900	9,26,544
Do. 1898-1899	5,50,439
Do. 1897-1898	6,07,488
Do 1896-1897	2,90,563

THE CHAMBER'S LIBRARY.

- No 1—Memorandum on Sea Customs Procedure and Accounts, dated Calicut, 3rd November, 1882.
- „ 2—G.O., dated 23rd May, 1879, *re* Cinchona Gardens in Tinnevelly District.
- „ 3—G.O., dated 4th March, 1880, *re* Cinchona Bark Grown in the Papanasam Hills in Tinnevelly District.
- „ 4—G.O., dated 10th May, 1880, *re* Boats, Tonnage, Fees, &c. The levy of tonnage fees on boats at outports.
- „ 5—G.O., dated 31st October, 1879, *re* Cinchona Cultivation in Tinnevelly.
- „ 6—G.O., dated 27th December, 1880, *re* Cochin Harbour.
- „ 7—Proceedings of Madras Government, dated 2nd August, 1881, Cochin Harbour, backwater, &c.
- „ 8—Letter from Colonel Stewart, dated 10th January, 1884, *re* Cochin Harbour.
- „ 9—G.O., dated 9th February, 1885, *re* Mail Contract.
- „ 10—G.O., dated 7th March, 1884, Correspondence, *re* Reducing the Jurisdiction of the Subordinate Court, Cochin, &c.
- „ 11—Ilbert Bill, Statement of Object and Reasons.
- „ 12—G.O., dated 26th June, 1885, Acts and Bills, *re* Indian Registration Act of 1877.
- „ 13—G.O., dated 16th September, 1884, *re* Extension System of the Value Payable Post.
- „ 14—Proceedings of the Board of Revenue, *re* the Development of Commercial Relations between India and Australia.
- „ 15—G.O., dated 2nd August, 1886, *re* British Trade.
- „ 16—G.O., dated 18th January, 1889, relative to Mr. Brunton's proposal to deepen the bar at Cochin.
- „ 17—Indian Ports Bill.
- „ 18—Gazette, *re* Indian Ports Act, 1889.
- „ 19—G.O., dated 16th March, 1880, *re* Fire at Cochin directing full inquiry into the origin, &c.
- „ 20—Scheme for giving Imperial protection, &c., Patents, Designs and Trade Mark.
- „ 21—Circular No. 532, dated 13th March, 1890, *re* Patents, &c.
- „ 22—G.O., dated 6th May, 1889, *re* Exportation of goods of Cochin during the South-West Monsoon.
- „ 23—Resolution of the Government, Marine Department
- „ 24—Letter from Chief Secretary to Government, dated 26th April, 1890, *re* Merchandise Marks Act.
- „ 25—Resolution of the Government of Bengal, dated 12th May, 1890, *re* Railway receipts should be recognised as negotiable and transferable instruments.
- „ 26—Proceedings of the Board of Revenue, dated 24th June, 1890, communicating an Extract from the Chemical Examiner's Report for 1890,

- No. 27—Bengal Chamber of Commerce Report, dated 31st January, 1890.
- „ 28—Bombay Chamber of Commerce Report, dated 31st December, 1889.
- „ 29—First Report of the Cochin Chamber of Commerce, dated 18th December, 1857.
- „ 30—Abstract of the Proceedings of the Madras Chamber of Commerce, 1836—1886.
- „ 31—Report of the Proceedings of the Madras Chamber of Commerce, 1887 and 1888.
- „ 32— Do. do. do.
from January, 1889, to June, 1890.
- „ 33—Report of the Madras Chamber of Commerce for the year ending 31st December, 1891.
- „ 34—Report of the Managing Committee of the Karachi Chamber of Commerce for the year ending 31st December, 1889.
- „ 35— Do. do. do. do. 1890
- „ 36— Do. do. do. do. 1891.
- „ 37—Report of the Bombay Chamber of Commerce for the year 1876-77.
- „ 38— Do. do. do. do. for the year 1877-78.
- „ 39— Do. do. do. do. for the year 1890.
- „ 40— Do. do. do. do. for the year 1891.
- „ 41—Report of the Committee of the Bengal Chamber of Commerce from 1st February, 1890, to 31st January, 1891.
- „ 42— Do. do. do. do. do.
from 1st February, 1891, to 31st January, 1892.
- „ 43—The Indian Merchant Shipping Bill, 1892.
- „ 44—Proceedings of the Judicial Department, dated 27th January, 1893, Bill Statement of Object and Reasons.
- „ 45—Correspondence relating to proposals for the improvement of the Cochin Harbour.
- „ 46—G. O., dated 13th June, 1888, *re* Export Manifests.
- „ 47—Proceedings of the Government of India, Revenue and Agricultural Department, No. 28 (Patents), dated 13th July, 1892.
- „ 48—Report of the Managing Committee of the Karachi Chamber of Commerce for the year ending 31st December, 1892.
- „ 49—Report of the Proceedings of the Madras Chamber of Commerce, January to December, 1892.
- „ 50—Report of the Committee of the Bengal Chamber of Commerce from 1st February, 1892, to 31st January, 1893.
- „ 51—Report of the Bombay Chamber of Commerce for the year 1892.
- „ 52— Do. do. do. do. 1893.

- No. 53—Proceedings of the Madras Chamber of Commerce, January to December, 1893.
- „ 54—Report of the Karachi Chamber of Commerce for the year ending 31st December, 1893.
- „ 55—Report of the Committee of the Bengal Chamber of Commerce from 1st February, 1893, to 31st January, 1894, Vol. II.
- „ 56—The Indian Merchant Shipping Bill, 1895.
- „ 57—Report of the Committee of the Bengal Chamber of Commerce from 1st February, 1894, to 31st January, 1895.
- „ 58— Do. do. do. do. do.
from 1st February, 1895, to 31st January, 1896.
- „ 59—Report of the Bombay Chamber of Commerce for the year 1894.
- „ 60— Do. do. do. do. 1895.
- „ 61—Proceedings of the Madras Chamber of Commerce for the year 1894.
- „ 62— Do. do. do. do. 1895.
- „ 63—Report on the Administration of Cochin for the year M. E. 1068 (15th August, 1892, to 14th August, 1893).
- „ 64—Annual Volume of the Sea-Borne Trade and Navigation of the Madras Presidency for the year 1889-90.
- „ 65—Finance and Revenue Accounts and Miscellaneous Statistics relating to the Finances of British India, Parts I, II, and III.
- „ 66—Lloyd's Register for 1895-96.
- „ 67—Report of the Bengal Chamber of Commerce from 1st February, 1896, to 31st January, 1897.
- „ 68—Report of the Underwriters' Association, Bombay, from 1st July, 1896, to 30th June, 1897.
- „ 69—Report of the Karachi Chamber of Commerce for the year ending 31st December, 1895.
- „ 70— Do. do. 31st December, 1896.
- „ 71—Report of the Bombay Chamber of Commerce for the year 1896.
- „ 72— Do. do. do. for 1897.
- „ 73—Report of the Madras Chamber of Commerce for 1897.
- „ 74—Report of the Bengal Chamber of Commerce from 1st February, 1897, to 31st January, 1898.
- „ 75—Report of the Karachi Chamber of Commerce for 1897.
- „ 76—Lloyd's Register for 1896-97.
- „ 77— Do. do. 1897-98.
- „ 78— Do. do. 1898-99.
- „ 79— Do. do. 1899-00.
- „ 80—Lloyd's Register for 1899-00. Rules and Regulations.
- „ 81—Bureau Veritas, 1897.
- „ 82— Do. 1898.
- „ 83— Do. 1899.

- No. 84—G. O., No. 471 of 31st May, 1899, *re* Coast Light Dues.
- „ 85—Review of the Trade of India, 1896-97.
- „ 86— Do. do. 1897-98.
- „ 87—Report of the Administration of Cochin for the year
M. E. 1072 (15th August, 1896, to 14th August, 1897).
- „ 88— Do. do. do. for the year
M. E. 1073 (15th August, 1897, to 15th August, 1898).
- „ 89—Minutes of Evidence taken before the Committee appointed
to inquire into the Indian Currency, together with an
analysis of the evidence.
- „ 90—Report of the Karachi Chamber of Commerce for the year
ending 31st December, 1898.
- „ 91—Report of the Bengal Chamber of Commerce from 1st
February, 1898, to 31st January, 1899, Vols. I. and II.
- „ 92—Review of the Trade of India, 1898-99.
- „ 93—Report of the Bombay Chamber of Commerce for the
year 1898.
- „ 94—Report of the Madras Chamber of Commerce for the
year 1898.
- „ 95—An Analysis of the Trade and Commerce of India, 1899.
- „ 96—Review of the Trade of India, 1899-1900.
- „ 97—Report of the Madras Chamber of Commerce for the year
1899.
- „ 98—Report of the Karachi Chamber of Commerce for the year
ending 31st December, 1899.
- „ 99—Report of the Bombay Chamber of Commerce for the year
1899.
- „ 100—Proceedings of Annual General Meeting of the Bengal
Chamber of Commerce, dated 20th February, 1900.
- „ 101—Report of the Bengal Chamber of Commerce from 1st
February, 1899, to 31st January, 1900, Vols. I. and II.
- „ 102—The Commercial Value of Wireless Telegraphic Com-
munication with the Andaman and Nicobar Islands,
6th February, 1900.
- „ 103—Report of the British Chamber of Commerce in Paris
for the year 1899.
- „ 104—Report of the Ceylon Chamber of Commerce for the
half-year ending 31st December, 1898.
- „ 105—Report of the Ceylon Chamber of Commerce for the
half-year ending 30th June, 1899.
- „ 106—Lloyd's Register for 1900-1901.
- „ 107— Do. do. Rules and Regulations.
- „ 108—Report of the Administration of Cochin for the year 1074,
M. E. (16th August, 1898, to 15th August, 1899).
- „ 109—Financial and Commercial Statistics of British India for
1900.
- „ 110—G. O., No. 27, dated 18th January, 1900, *re* Crew Space
on Boardships.

- No. 111—G. O., No. 211, dated 15th March, 1900, *re* Load Line Marks, &c., for sailing vessels.
- „ 112—Report of the Committee of the Bengal Chamber of Commerce for the year 1900.
- „ 113—Proceedings of the Madras Chamber of Commerce, January—December, 1900.
- „ 114—Report of the British Chamber of Commerce for the year 1900.
- „ 115—Report of the Karachi Chamber of Commerce for the year ending 31st December, 1900.
- „ 116—Report of the Ceylon Chamber of Commerce for the half-year ending 31st December, 1900.
- „ 117—Report of the Bombay Chamber of Commerce for the year 1900.
- „ 118—Bengal Chamber of Commerce Proceedings of Annual General Meeting, 26th February, 1901.
- „ 119—Report of the Ceylon Chamber of Commerce for the half-year ending 30th June, 1901.
- „ 120—A Practical Companion to the Indian Merchandise Marks Act IV of 1889 (as amended up to 1st June 1891).
- „ 121—Review of the Trade of India in 1900-01.
- „ 122—“The Times” Atlas.
- „ 123—Lloyd’s Register for 1901-02.
- „ 124— Do. do. do. Rules and Regulations.

Rate of Port Dues at Cochin to be charged on Sea-going Vessels of 15 tons and upwards.

Description of Vessels.	Rate of dues chargeable per ton.	How often.
COASTING.		
	RS. A. P.	
Native crafts and square rigged vessels <i>in ballast and not carrying passengers</i>	0 1 1 $\frac{1}{2}$	Once in 60 days at that port only.
Steamers in ballast and not carrying passengers	0 2 3	Once in 30 days at the first port or any other port on the West Coast.
Native crafts and square rigged vessels <i>with cargo and/or passengers</i>	0 1 6	Once in 60 days at that port only.
Steamers <i>with cargo and/or passengers</i>	0 3 0	Once in 30 days at the first port or any other port on the West Coast.
FOREIGN.		
Steamers, native crafts and square rigged vessels <i>in ballast and not carrying passengers calling at one port only</i> :—		
(a) Trading with Straits Settlements	0 2 3	Once in 60 days at that port.
(b) Others	0 2 3	On each entry into port.
Steamers, native crafts and square rigged vessels <i>in ballast and not carrying passengers calling at more than one port</i> :—		
(c) Trading with Straits Settlements. { If this is the 1st port called	0 3 0	Once in 60 days at that port.
{ Otherwise	0 1 6	Once in 60 days on the West Coast.
(d) Others { If this is the 1st port called	0 3 0	On each entry into port.
{ Otherwise	0 1 6	Once for the voyage.
Steamers, native crafts and square rigged vessels <i>with cargo and/or passengers calling at one port only</i> :—		
(a) Trading with Straits Settlements (if at first port on the West Coast)	0 3 0	Once in 60 days at that port.
(b) Others	0 3 0	On each entry into port.
Steamers, native crafts, &c., &c., <i>calling at more than one port</i> :—		
(c) Trading with Straits Settlements. { If this is the 1st port called	0 3 0	Once in 60 days at that port.
{ Otherwise (or at the 2nd port)	0 1 6	Once in 60 days on the West Coast.
(d) Others { If this is the 1st port called	0 3 0	On each entry into port.
{ Otherwise (or at the 2nd port)	0 1 6	Once for the voyage.

1. In the case of a coasting vessel which calls at a port *in ballast* paying port dues there at three-fourths rate under section 46 of the Indian Ports Act X. of 1889 and enters a second port laden with cargo and passengers taken in at the first port, the difference between the full rate prescribed in the schedule and the ballast rate shall be recovered at the second port.

2. If a foreign vessel trading with Straits Settlements calls at a single port in a group *in ballast* paying port due there at three-fourths rate and re-visits the same port within 60 days laden with cargo or passengers the difference between the full rate and ballast rate shall be recovered.

3. If a foreign vessel calling at more than one port enters the first port *in ballast* and pays port dues at three-fourths rate and re-enters that port within 60 days laden with cargo and passengers, the difference between the full rate and the ballast rate shall be recovered. If the vessel call, at the second port also in ballast and pays three-fourths of the additional rate and enters the same or any other port on the same voyage with cargo or passengers, the difference between the full additional rate and three-fourths of it paid at the second port shall be recovered.

NOTE—1. Half the above rate of dues will be charged on any vessel not discharging or taking cargo after 48 hours (as per section 47 of Act X. of 1889).

2. No dues will be charged on any vessel entering or leaving a port within 48 hours without discharging or taking cargo or passengers.

3. No dues will be charged on any vessel which having left a port is compelled to re-enter it by stress of weather or in any case of damage (as per section 48 of Act X. of 1889).

Explanations.

(a) "*Coasting Ship*" or "*Coasting Steamer*" means respectively a ship or steamer which at any port discharges cargo exclusively from, or takes in cargo exclusively for, any port in the island of Ceylon or in any part of India between the westernmost part of Sindh and the south-easternmost part of Burma; and "*Coasting Steamer*" includes a coasting steam-vessel having a general pass under Section 164 of the Sea Customs Act, 1878.

(b) "*Voyage*."—In the case of vessels other than those trading with the Straits Settlements, after calling at a port in the western group and taking in cargo, proceeding to some other port in the same group and then returning to the first port to complete loading before finally sailing for Europe, the two visits are to be considered as occurring in one and the same voyage for the purpose of port dues.

(c) "*Foreign Ship*" or "*Foreign Steamer*" means respectively a ship or steamer not being a coasting ship or coasting steamer.

(d) "*Foreign vessels in ballast*."—When a foreign vessel calls first at a port in ballast, pays the ballast rate and proceeds to other ports within the eastern or western group, and returns to the first port called at to complete her cargo, the difference between the full and ballast dues is not to be levied. A vessel will be considered to be engaged in the coasting trade when she carries cargo exclusively for a Customs port and not intending to go on a foreign voyage.

NOTE.—All Islands in Minicoy are British Possessions and only 1½ annas can be charged.

Maldivé is foreign under the Sultan's administration.

Tonnage of vessels of the following foreign Nationalities are to be accepted :—

French, German, Norwegian, Swedish, Spanish, Italian and U. S. of America.

NOTICE TO MARINERS.

INDIA, WEST COAST, NARRAKAL.

The smoothest water will be found in $5\frac{1}{2}$ fathoms L. W. S. T. soft mud on the following bearings magnetic, viz. :—

Narrakal Light	...	N. 40° E.
Narrakal Obelisk	...	N. 53° E.
Cochin Light House	...	S. 45° E.

2. Mariners are cautioned that the mud flats off Narrakal have extended Sea-ward.

3. The Narrakal Light, bright fixed will be exhibited from 15th May to 30th September from the Flagstaff.

G. LEVERETT,

Master Attendant of Sirkar Ports.

COCHIN,)
1st May, 1901.)

**Schedule of Revised Rates of Boat-hire for the
Port of Cochin.**

ORDINARY RATES.	Outer Roads.	Inner Harbour.
	RS. A. P.	RS. A. P.
Boats carrying 6 large pipes of oil or 7 small or 12 puncheons or 20 hogsheads	2 8 0	1 0 0
Boats carrying 50 bales yarn or fibre or 50 cases coffee or 12 bales of hides	3 4 0	1 0 0
Boats carrying 100 bags of rice, coffee, pepper, &c., per 100 bags	3 12 0	1 0 0
Boats carrying coir, dholls or rolls of coir yarn or coils of coir rope, per boat load	3 6 0	1 0 0
One cargo boat loaded with general cargo or passengers	3 8 0	1 2 0
Landing ballast or coals, per ton	0 10 0	0 5 0
Transshipping cargo from one vessel to another, per trip	2 0 0	...
Transshipping coals or ballast, per ton... ..	0 8 0	...
Licensed kettoo vullem or boats from 3 to 4 tons with cargo, per ton	2 4 0	0 12 0
Ordinary passenger boat, per trip	2 0 0	0 12 0
Water trip—		
For a load of 20 casks of 50 gallons each including all charges, per trip	15 0 0	12 12 0
Return trip	Half the ordinary rates.	
Do. with cargo from a different vessel	Full ordinary rates.	

EXTRAORDINARY RATES.

Boats proceeding to vessels beyond 7 fathoms low water, but not outside of port limits, per trip... ..	Double rates.
For a boat employed between 8 P.M. and 4 A.M. in proceeding to outer roads and back, provided the boat left the shore after 8 P.M., per trip	Double outer rates.
Boats employed in inner roads between 8 P.M. and 4 A.M., per trip	Double inner harbour rates.

In cases of extraordinary service, as rendering aid to a vessel in distress within the limits of the port, the Port Officer shall adjudge and allow such additional hire as the circumstances of the case may seem to warrant, reporting the same for the information of the Collector of the district.

Table showing the Monthly and Yearly Rainfall at Cochin from 1st January, 1882, to 30th June, 1901.

	1882	1883	1884	1885	1886	1887	1888	1889	1890	1891
January	3·829	1·313	0·01	...	0·37	...
February	0·103	...	0·690	...	0·15	0·80	0·73	0·03	0·62
March	0·062	3·530	3·105	0·038	0·05	0·70	0·22	0·85	1·15	4·88
April	1·002	3·240	1·805	3·992	5·26	8·98	1·74	8·93	4·60	4·04
May	18·560	17·866	10·249	5·6·0	17·84	4·61	16·26	12·39	8·08	10·80
June	40·631	32·610	13·962	43·025	26·59	31·96	32·34	29·33	18·18	22·16
July	44·301	24·325	18·546	33·527	18·42	11·26	13·76	9·67	17·24	15·72
August	18·118	13·326	14·716	9·334	11·27	4·81	9·35	8·90	5·82	9·65
September	11·138	4·212	15·484	6·024	10·97	5·40	7·03	9·06	6·82	2·97
October	17·189	13·214	20·077	24·027	12·31	12·18	8·28	9·06	6·63	26·04
November	7·600	7·377	7·585	10·799	8·57	3·01	9·08	6·98	5·05	5·60
December	2·610	1·854	0·510	3·840	0·84	1·95	0·64	1·55	0·97	2·76
Total...	165·040	122·970	106·039	140·896	112·12	85·01	99·51	97·45	74·94	105·54

	1892	1893	1894	1895	1896	1897	1898	1899	1900	1901
January	2·78	...	0·32	...	0·42	0·01	1·54	1·40	0·73
February	0·44	1·35	1·10	0·56	1·32	5·76	...	0·63
March	4·15	7·44	2·71	0·06	2·38	1·03	0·12	2·46	0·95	3·90
April	9·43	2·79	5·80	7·47	2·80	9·63	3·94	14·67	13·84	4·38
May	11·10	13·89	4·12	9·91	13·65	6·52	13·56	11·82	4·12	8·85
June	17·40	27·97	23·36	28·03	29·34	42·44	30·37	28·45	28·30	31·32
July	41·00	9·90	17·51	18·93	29·63	23·53	24·45	8·53	18·02	...
August	20·14	6·06	12·61	10·10	20·82	23·77	8·99	6·97	10·85	...
September	6·78	6·64	5·15	3·49	4·07	21·06	11·34	2·13	6·33	...
October	20·66	7·16	11·96	18·47	10·38	10·62	20·61	9·96	8·70	...
November	3·57	5·95	5·56	4·08	6·54	1·73	10·88	0·20	3·43	...
December	0·81	...	0·73	1·22	0·53	3·15	0·19	1·70	1·18	...
Total...	135·48	91·93	90·61	102·08	120·14	144·46	125·78	94·19	97·12	49·81

BENGAL CHAMBER OF COMMERCE,
ROYAL EXCHANGE BUILDING,
CALCUTTA, 1st March, 1901.

Circular No. 89—1901.

HOLIDAYS—1901.

MEMO.—The following particulars relating to Public Holidays in Indian Ports, &c., during the current year 1901, are circulated, under the orders of the Committee, for the information of Members of the Bengal Chamber of Commerce.

W. PARSONS,
Secretary.

HOLIDAYS IN BENGAL.

I.—Holidays declared by the Government of Bengal.

OFFICIAL.

Holidays under the Negotiable Instruments Act XXVI. of 1881.

[*Extract from pages 1368-1369, Part I., of the "Calcutta Gazette" of December 12th, 1900.*]

NOTIFICATION—No. 6397—Mis.

The 6th December, 1900.—Under Section 25 of Act XXVI. of 1881, entitled "The Negotiable Instruments Act, 1881," the Lieutenant-Governor hereby declares the following days to be public holidays during the year 1901 :—

All Sundays.

January 1st	New Year's Day.
" 25th and 26th	Sri Panchami.
March 5th	Dol Jatra.
April 5th	Good Friday.
" 6th	Easter Saturday.
" 8th	" Monday.
" 13th	Chaitra Sankranti.
May 27th	Dasahara.
September 5th	Janmastami.
October 12th	Máhalaya.
" 19th, 20th (Sunday), 21st, 22nd, 27th (Sunday)	
and 28th	Durga and Lakshmi Pujas.

November 10th (Sunday) and 11th	Kali Puja.
„ 20th and 21st	Jagadhatri Puja.
December 24th	Christmas Eve.
„ 25th, 26th and 27th	Christmas Day and two days following.

The day which may be fixed by the Government of India for the observance of the birthday of Her Majesty the Queen-Empress of India shall also be a public holiday.

E. N. BAKER,
Secy. to the Govt. of Bengal.

Holidays in Public Offices other than those named.

DEPARTMENTAL HOLIDAYS.

NOTIFICATION—No. 6398—Mis.

The 6th December, 1900.—With reference to the above Notification, the Lieutenant-Governor hereby notifies that, on the following days during 1901, which are not declared to be “Public holidays,” the offices under the Government of Bengal, and all Revenue and Magisterial Courts in Bengal, with the exception of the offices of Collector of Customs, Shipping Master, the Registrar of Assurances, Calcutta; the Collector of Stamp Revenue, Calcutta; the Stamping Department of the Office of the Superintendent of Stamps, Calcutta; and the Salt Rowanah and Opium Departments of the Board of Revenue, shall be closed:—

I.—Muhammadian Holidays.

Id-ul-fitr	On the 23rd January; but if the moon be visible on the 21st, then on the 22nd January.
Id-uz-zuha	On the 1st April; but if the moon be visible on the 21st March, then on the 31st March.
Muharram	On the 29th and 30th April; but if the moon be visible on the 19th April, then on the 28th (Sunday) and 29th April.
Fatiha Dowazdaham...	On the 30th June (Sunday),	but if the moon be visible on the 17th June, then on the 29th June.	

II.—Hindu Holidays.

Durga and Lukshmi Pujas. October 17th, 18th, 23rd, 24th, 25th and 26th.

III.—Other Holidays.

The day preceding the Christmas Eve	...	23rd December.
The third day following Christmas	...	28th „

E. N. BAKER,
Secy. to the Govt. of Bengal.

II.—Holidays declared by the Bengal Chamber of Commerce.

HOLIDAYS UNDER CHARTER-PARTIES AND SHIPPING ORDERS.

With reference to the above Notifications, the Committee of the Bengal Chamber of Commerce, empowered on that behalf by the Resolution passed at a General Meeting of the Chamber, held on the 5th December, 1888, do hereby declare that the Holidays specified below shall be the Holidays during the year 1901, recognised by the Chamber under Charter-Parties and Shipping Orders as Holidays, according to the Custom of the Port:—

1901.

<i>Date.</i>	<i>Holidays.</i>	<i>Day.</i>	<i>Number of days to be observed as Holidays.</i>
January 1st	... New Year's Day	... Tuesday	... 1 day.
„ 25th	... Sri Panchami	... Friday	... 1 „
April 5th	... Good Friday	... Friday	... 1 „
„ 6th	... Easter Eve	... Saturday	... 1 „
„ 8th	... „ Monday	... Monday	... 1 „
„ 13th	... Chaitra Sankranti	... Saturday	... 1 „
October 19th, 21st and 22nd	Durga Puja	... Saturday, Monday and Tuesday	... 3 days.
„ 28th	... Lakshmi Puja	... Monday	... 1 day.
November 11th	... Kali Puja	... Monday	... 1 „
„ 20th	... Jagadhatri Puja	... Wednesday	... 1 „
December 24th	... Christmas Eve	... Tuesday	... 1 „
„ 25th and 26th	Christmas Day and the day following ...	{ Wednesday and Thursday	... 2 days.

The day which may be fixed by the Government of India for the observance of Her Majesty the Queen-Empress' Birthday.

N.B.—*All Sundays are Holidays.*

CALCUTTA, }
18th December, 1900 }

(By order of the Committee).

W. PARSONS,
Secretary.

GOVERNMENT OF BENGAL—FINANCIAL DEPARTMENT.

NOTIFICATION—No. 752—Mis.

Dated Calcutta, the 31st January, 1901.

WHEREAS Saturday, the 2nd February, 1901, has been set apart as a day of Public Mourning for Her late Majesty Victoria of the United Kingdom of Great Britain and Ireland, Queen-Empress of India :

And whereas proper observance of the day in Banks and other places of business can only be secured in accordance with the provisions of the Negotiable Instruments Act, 1881, by declaring the said day to be a Public Holiday, and cannot be provided for by other means :

In exercise of the power conferred by section 25 of the Negotiable Instruments Act, 1881, the Lieutenant-Governor is pleased to declare Saturday, the second day of February next, to be a Public Holiday within the meaning of the said Act.

E. N. BAKER,

Secretary to the Government of Bengal.

BENGAL CHAMBER OF COMMERCE,
ROYAL EXCHANGE BUILDING,
CALCUTTA, 31st January, 1901.

Circular No. 40—1901.

To

ALL MEMBERS OF THE CHAMBER.

DEAR SIRS,

Funeral of Her late Majesty the Queen-Empress.

I am directed by the Committee of the Bengal Chamber of Commerce to intimate that, under the powers conferred by the Resolution passed at the General Meeting of the Chamber, held on 5th December, 1888, it is hereby declared that Saturday, the 2nd February, 1901, which has been declared by the Government of Bengal as a Holiday under the Negotiable Instruments Act, XXVI of 1881, shall also be recognised by the Chamber as a holiday under Charter Parties and Shipping Orders according to the custom of the Port.

Yours faithfully,

W. PARSONS,

Secretary.

OFFICES OF THE GOVERNMENT OF INDIA.

Holidays declared by the Government of India for the Calcutta
Offices under that Government.

[Extract from pages 37-38, Part I, of "The Gazette of India," of
19th January, 1901].

HOME DEPARTMENT.

NOTIFICATION.

PUBLIC.

Calcutta, the 18th January, 1901.

No. 119.—The Governor-General in Council hereby notifies that on the following days during 1901, which are not declared by the Government of Bengal to be "public holidays" under section 25 of the Negotiable Instruments Act, 1881, the offices directly subordinate to the Government of India at Calcutta, with the exception of—

No. 6397—Mis., dated the
6th December, 1900.

- (1) the Office of issue of the Paper Currency Department,
- (2) the Office of the Comptroller and Auditor-General shall be closed:—

I.—Muhammadan Holidays.

Id-ul-fitr	On the 23rd January; but if the moon be visible on the 21st, then on the 22nd January.
Id-uz-zuha	On the 1st April; but if the moon be visible on the 21st March, then on the 31st March.
Muharram	On the 29th and 30th April; but if the moon be visible on the 19th April, then on the 28th (Sunday) and 29th April.
Fatiha-e-Duázdáham	On the 30th June (Sunday); but if the moon be visible on the 17th June, then on the 29th June.

II.—Hindu Holidays.

Durga and Lakshmi Pujas ... October 17th, 18th, 23rd, 24th, 25th and 26th.

III.—Other Holidays.

The day preceding Christmas Eve.—23rd December.

The third day following Christmas.—28th December.

J. P. HEWETT,
Secy. to the Govt. of India.

HOLIDAYS IN BOMBAY.

OFFICIAL.

I.—Holidays declared by the Government of Bombay.

PUBLIC HOLIDAYS FOR THE YEAR 1901.

Sanctioned by Government under Section 25 of Act XXVI of 1881, entitled the "Negotiable Instruments Act, 1881"—

NEW YEAR	... 1st & 2nd January	... Tuesday & Wednesday	... 2 days.
HOLI	... 4th March	... Monday	... 1 day.
JAMSHED-I-NAOROZ.	21st March	... Thursday	... 1 "
RAMNAVAMI	... 28th March	... Thursday	... 1 "
EASTER	... 5th, 6th & 8th April	... Good Friday, Sat. & Mon.	3 days
MOHURRUM	... 30th April	... Tuesday	... 1 day.
QUEEN'S BIRTHDAY.	(Such day as may be fixed by the Governor in Council)	... 1 "	.. 1 "
WHIT MONDAY	... 27th May	... Monday	... 1 "
FIRST MONDAY IN AUGUST	... 5th August 1 "
COCOANUT DAY	... 29th August	... Thursday	... 1 "
GOKUL-ASHTAMI	... 6th September	... Friday	... 1 "
PARSI NEW YEAR	... 13th & 14th September.	Friday and Saturday	... 2 days.
GANESH-CHATURTHI.	16th September	... Monday	... 1 day.
KHORDADSAL	... 20th September	... Friday	... 1 "
DUSSERA	... 22nd October	... Tuesday	... 1 "
DEWALI	... 9th, 11th & 12th Nov.	... Saturday, Mon. & Tues.	3 days.
CHRISTMAS	... 24th, 25th & 26th Dec.	... Tuesday, Wed. & Thurs.	3 "
NEW YEAR	... 31st December	... Tuesday	... 1 day.

NOTE.—Good Friday, Christmas Day, and New Year's Day are holidays under the Negotiable Instruments Act, but are included in the above list.

COMMERCIAL.

II.—Holidays declared by the Bombay Chamber of Commerce.

HOLIDAYS UNDER CHARTER-PARTIES FOR THE YEAR 1901.

In accordance with the Resolution passed at a General Meeting of the Chamber of Commerce, held on the 22nd July, 1881, the Committee of the Chamber beg to inform the Public that the following days have been fixed by them to be holidays, under Charter-Parties, for the year 1901:—

NEW YEAR	... 1st January	... Tuesday	... 1 day.
HOLI	... 4th March	... Monday	... 1 "
RAMNAVAMI	... 28th March	... Thursday	... 1 "
EASTER	... 5th April	... Good Friday	... 1 "
MOHURRUM	... 30th April	... Tuesday	... 1 "
QUEEN'S BIRTHDAY.	(Such day as may be fixed by the Governor in Council)	... 1 "	.. 1 "
COCOANUT DAY	... 29th August	... Thursday	... 1 "
GOKUL-ASHTAMI	... 6th September	... Friday	... 1 "
PARSI NEW YEAR	... 14th September	... Saturday	... 1 "

GANESH-CHATURTHI, 16th September	... Monday	... 1 day.
DUSSERA ... 22nd October	... Tuesday	... 1 ,,
DEWALI ... 11th November	... Monday	... 1 ,,
CHRISTMAS ... 25th December	... Wednesday	... 1 ,,

By order of the Committee,

FREDERICK NOEL PATON,

BOMBAY, 20th Dec., 1900.

Secretary.

HOLIDAYS IN MADRAS.

Holidays declared by the Government of Madras and accepted by the Madras Chamber of Commerce.

OFFICIAL AND COMMERCIAL HOLIDAYS, 1901.

(Extract from the "Fort Saint George Gazette," dated the 4th December, 1900).

Under Section 25 of the Negotiable Instruments Act (XXVI of 1881), His Excellency the Governor-in-Council hereby declares the following days to be public holidays for the year 1901 :—

Christmas Vacation.—(1900-1901) latter part, 1 day, Tuesday, the 1st January.

Pongul.—1 day, Monday, the 14th January.

Easter.—4 days, Friday to Tuesday, the 5th to the 9th April, both days inclusive.

Whitsuntide.—2 days, Monday and Tuesday, the 27th and 28th May.

Queen's Birthday.—1 day (to be fixed by H. E. the Governor in Council).

Avani Avattam.—1 day, Thursday, the 29th August.

Mahalaya Amavasay.—1 day, Saturday, the 12th October.

Ayudha Puja —1 day, Monday, the 21st October.

Prince of Wales' Birthday.—1 day, Saturday, 9th November.

Dipavali.—1 day, Monday, the 11th November.

Christmas Holidays.—(1901-1902) first part, 6 days, Wednesday the 25th to Tuesday the 31st December, both days inclusive.

N.B.—Of the above Holidays, the following are already legalised by the Negotiable Instruments Act:—New Year's Day, Good Friday and Christmas Day.

CHAMBER OF COMMERCE, }
Madras, 6th December, 1900. }

ARTHUR E. LAWSON,

Secretary.

CEYLON CHAMBER OF COMMERCE.

The following have been officially announced as holidays for the year 1901 :—

Public Holidays.	Bank Holidays.	Customs Holidays.
January 1st and 2nd,* <i>New Year.</i> February 20th, <i>Ash Wednesday.</i> March 30th, <i>The Mohammedan Hadji Festival.†</i> April 5th to 9th,* <i>Good Friday and Easter.</i> April 13th, <i>Hindu New Year.†</i> May 3rd, <i>The First Full Moon of the Singhalese month Wesak.†</i> May 16th, <i>Ascension Day.</i> May 24th, <i>Queen's Birthday.</i> June 20th, <i>Queen's Accession Day.</i> November 9th, <i>Prince of Wales' Birth- day.</i> December 24th to 27th,* <i>Christmas.</i>	January 1st and 2nd,* <i>New Year.</i> January 14th, <i>Tamil Thai Pongal Day. (13th January being a Sunday).</i> April 5th to 9th,* <i>Good Friday and Easter.</i> May 3rd, <i>The First Full Moon in Wesak.†</i> May 24th, <i>Queen's Birthday.</i> July 1st, <i>Special Holiday to Banks. Val Festival. (To be fixed).</i> November 9th, <i>Prince of Wales' Birth- day.</i> November 10th, <i>Deepavali Festival.†</i> December 24th to 27,* <i>Christmas.</i>	January 1st, <i>New Year's Day.</i> April 5th, <i>Good Friday.</i> April 8th, <i>Easter Monday.</i> May 24th, <i>Queen's Birthday.</i> December 25th, <i>Christmas Day.</i>

These Holidays are subject to alteration by H. E. the Governor.

* *Both days inclusive.*

† The date given for the Native Festivals are not guaranteed. Timely notice regarding them will be found in the *Government Gazette*.

FRED. W. WALDOCK

Secretary.



CORRESPONDENCE.

Late Delivery of Letters.

From CHAMBER, to POSTMASTER-GENERAL, Madras,
dated Cochin, 31st August, 1900.

I much regret being compelled to trouble you again in the matter of late delivery of letters here.

Following upon the last occasion when this Chamber appealed for your kind services, there was a temporary improvement and mails were for a few days received with fair punctuality. But things have again drifted back to their previous state, in fact have become worse and lately the delivery of letters is made any time between 8 A.M. and 2 P.M. It can scarcely be necessary to lay any special stress upon the great inconvenience which such irregularity causes.

It is now 11 A.M. and no tappal as yet been delivered.

Begging that you will kindly once more give the matter your attention and endeavour to remedy the present unsatisfactory state of affairs.

From POSTMASTER-GENERAL, to CHAMBER,
dated Madras, 3rd September, 1900.

I have the honour to acknowledge the receipt of your letter dated the 31st August, 1900, and in reply to inform you that the subject of it will receive my best attention.

2. I have already addressed the Divisional Superintendent on the subject and directed the Inspector to proceed on the line to set matters right.

From CHAMBER, to POSTMASTER-GENERAL,
dated Cochin, 10th September, 1900.

I have the honour to acknowledge receipt of your letter of 3rd instant and thank you for your kind and prompt attention to the matter of delay in delivery of letters here, and evidence of your influence has already been felt, for yesterday and to-day the tappal was received soon after 7 A. M.

This proves that it is *possible* for letters to be delivered at a reasonable hour, and this Chamber begs that you will kindly make arrangements to ensure the continuance of an early and punctual delivery.

Again thanking you for the kind attention you have already given to the matter.

From CHAMBER, to POSTMASTER-GENERAL,
dated Cochin, 22nd November, 1900.

It is with regret that I have again to trouble you with complaints in regard to the continued late delivery of letters here, and beg that something may be done to remedy the existing state of affairs, which are a constant source of inconvenience and annoyance to the public.

From enquiries made it would seem that the delay chiefly occurs between Shoranur and Trichur, where the mails are now carried under contract by pony jutka, but these latter appear to be so disgracefully equipped and mismanaged that only over a distance of 20 miles (Shoranur to Trichur) letters when conveyed by runners were received three to four hours earlier at Trichur than is now the case under the existing arrangements.

Begging that you will once more be good enough to give this matter your kind attention and endeavour to ensure the more punctual and early delivery of mails here.

From POSTMASTER-GENERAL, to CHAMBER,
dated Madras, 28th November, 1900.

I have the honor to acknowledge the receipt of your letter of the 22nd November, 1900, and in reply to inform you that the subject of it will receive my best attention.

From POSTMASTER-GENERAL, to CHAMBER,
dated Madras, 17th December, 1900.

In continuation of my letter No. 36885, dated 28th November, 1900, I have the honor to inform you that the present contractor who conveys mails by tongas between Shoranur and Kottaparamba having failed, other arrangements are being made which will be completed by the 1st proximo. I trust there will be no cause for similar complaints after that date.

From CHAMBER, to POSTMASTER-GENERAL,
dated Cochin, 22nd December, 1900.

I have the honor to acknowledge with thanks the receipt of your letter No. C. M. 1-118
40050, dated 17th instant, and note with pleasure that other arrangements with regard to early delivery of mails here will be made from the 1st proximo.

Harbour Improvements.

From CHAMBER, to G. W. DANCE, Esq., Collector of Malabar, Calicut,
dated Cochin, 31st August, 1900.

Being given to understand that Lord Curzon is expected to visit Cochin in November, I am directed to ask if you will be good enough to inform us whether His Excellency will condescend to receive an Address from this Chamber.

From G. W. DANCE, Esq., Collector of Malabar, to CHAMBER,
dated Calicut, 13th September, 1900.

With reference to your letter of the 31st ultimo, I have the honor to inform you that the Resident has arranged for the acceptance of an Address from the Chamber by His Excellency the Viceroy.

From CHAMBER, to G. T. MACKENZIE, Esq., British Resident, Bolghotty,
dated 18th October, 1900.

I have the honor to hand you herewith copy of this Chamber's address to His Excellency the Viceroy, for the favor of your kind transmission to His Excellency's Private Secretary.

With regard to the copies of past correspondence alluded to therein, I hope to be able to send you same early next week.

Address.

HIS EXCELLENCY THE RIGHT HON'BLE GEORGE NATHANIEL BARON
CURZON OF KEDLESTON, P.C., G.M.S.I., G.M.I.E., *Viceroy*
and Governor-General of India.

YOUR EXCELLENCY,

The Members of the Cochin Chamber of Commerce respectfully tender their hearty welcome to Your Excellency, whose visit to this ancient and historical town is deeply appreciated and places on record the first occasion upon which a Viceroy of British India has set foot in what was once the capital of Portuguese India—an impressive event, which we hope will, in the accomplishment of the project set forth in this address, be signalized by an appropriate and permanent memorial.

2. While regretting that our address of welcome to Your Excellency should also include a solicitation of your favor, the Chamber feels that, as the subject of its appeal could not be more effectually introduced than while Your Excellency is in the position to form an opinion on its merits by personal observation, a more fitting opportunity than the present could hardly be selected for laying the matter before you.

3. The scheme to which we ask Your Excellency's kind attention is one that this Chamber has been canvassing for the past 30 years, and has for its object the improvement of the Harbour of Cochin, so as to render it capable of fulfilling its natural destiny as a *first-class Harbour*.

4. The controlling influence which at present prevents this being attainable is the bar across the mouth of the entrance to the inner Harbour.

5. The Chamber will not now trouble Your Excellency by recapitulating all that has already transpired with the Madras Government and others on the subject, but would respectfully ask to be allowed to submit for your kind attention a copy of past correspondence and reports relating to the proposed scheme.

6. In addition to these particulars, the Chamber would here bring to your special notice the following important facts which have since transpired.

7. The last professional report made upon the Harbour was in 1881 by Mr. A. Parkes, M.I.C.E., Chief Engineer of the Madras Harbour Works, who considered that Cochin could be converted into a first-class Harbour at an estimated cost of 81 lakhs of rupees.

8. The Chamber, however, were then reluctantly compelled to record that it was beyond the ability of the existing trade of the port to pay the interest required by Government (4 per cent.) on such an outlay.

9. This was twenty years ago, and we would now solicit Your Excellency's kind attention to the following particulars showing development in the trade of the port since then :—

	1881.	Year ending 30th June, 1900.
Value of exports and imports ...	Rs. 1,11,33,058	Rs. 3,10,68,252
Tonnage of vessels entered and cleared Tons	217,786	Tons 487,180
Port dues collected ...	Rs. 31,694	Rs. 61,400

and which returns disclose the fact that during the period under review, the trade of our port has been more than doubled, so that although in 1881 it might not have been possible to contribute the required return on the outlay involved, the present visible resources justify the Chamber in believing that this could now be done.

10. In estimating what revenue may be expected from the existing trade of the port, the following show the basis of calculation and results arrived at:—

Average tonnage during the last two years of—

	Exports ...	92,000		
	Imports ...	125,000		Rs.
	Tons	217,000	@ 12 annas per ton	... 1,62,750
Tonnage of vessels	{ Cochin ...	510,000	Port dues collected	... 63,400
	{ Malipuram	82,000	do. do.	... 6,300
Proposed increased dues on tons	592,000	@ 1 anna per ton	...	37,000
		Estimated annual revenue	...	2,69,450

In addition to the above the Chamber feels that it would not be unreasonable to expect His Highness the Rajah of Cochin to contribute towards the revenue of the proposed Harbour for the means would thereby be provided for materially increasing the earnings of the Cochin State Railway now under construction.

11. When last the Madras Government was addressed on the present subject, there was then no immediate prospect of Cochin being connected by Rail with the Madras Railway, but now that, through the enterprise of His Highness the Rajah of Cochin, this long felt want will soon be provided, the Chamber respectfully submits that this fact together with the evidence given of the increasing trade of the port, and the revenue to be derived therefrom, justify our present appeal to Your Excellency, and would venture to hope that the particulars given herein will evoke your interest in the proposed scheme, and that it may be deemed worthy of Your Excellency's favourable consideration.

12. With reference to Mr. Parkes' estimate of the cost of the proposed improvements, it is believed that the necessary work could be done for a much smaller sum, and the Chamber would respectfully plead the desirability of another survey being held upon the Harbour.

13. The Chamber will not presume to obtrude its opinion upon the Imperial advantages which might be associated with a first-class Harbour situated as this would be, feeling that if such exist they are not likely to escape Your Excellency's observation.

14. In concluding the Chamber beg leave to express their grateful thanks to Your Excellency in vouchsafing to receive this Address, and trust that, as a fitting memento of your visit to Cochin, the proposed new Harbour may in due course become an accomplished fact.

Respectfully awaiting the favor of Your Excellency's kind reply,

We have the honor to be,

Your Excellency's most obedient servants,

Members of Committee. { (Signed) ERNEST H. BLACK, *Chairman*.
 { (") C. F. ROTH.
 { (") R. POUND.
 { (") J. DELL.
 { (") J. BOWMAN.

COCHIN,
 19th November, 1900.

126074

Xh223:MS7r

D2

A-131

MS

1-DEC1949

MUL

126074

