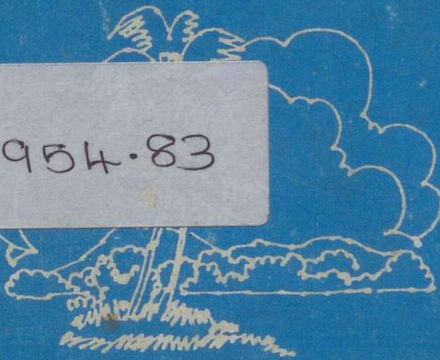


*Kollam*

*DISTRICT  
HAND BOOKS OF  
KERALA*



954.83

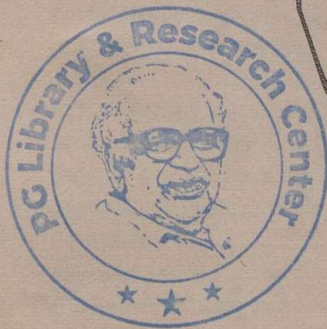


DEPARTMENT OF PUBLIC RELATIONS  
GOVERNMENT OF KERALA



**DISTRICT  
HAND BOOKS OF  
KERALA**

1938



DE

**KOLLAM**

**DEPARTMENT OF PUBLIC RELATIONS  
GOVERNMENT OF KERALA**

*District Hand Books of Kerala*  
**KOLLAM**

Department of Public Relations  
June 1996

954.83

28P1

Editor-in-chief  
**G. Gopalakrishnan**  
Director of Public Relations (in-charge)

Compiled by  
**N.S. Anil Kumar**  
Dist. Information Officer

Editor  
**P. Ramachandran Nair**

Asst. Editor  
**Xavier Primus Rajan M.R.**

Cover  
**E.S. Varghese**

---

Published by the Director, Department of Public Relations, Government of Kerala

Copies : 8,000  
*Not for Sale*

## Contents

Introduction .....	5
Short History .....	5
Topography and Climate .....	6
Forests .....	6
Mineral Resources .....	6
Population .....	7
Administration .....	7
Agriculture .....	8
Irrigation .....	9
Animal Husbandry .....	9
Fisheries .....	10
Industries .....	11
Education .....	12
Public Health .....	12
Community Development .....	13
Transport .....	13
Post & Telegraph .....	15
Mass Communication .....	15
Cultural Contributions .....	15
Important Religious Centres .....	16
Festivals .....	17
Places of Interest .....	18
Blocks and Panchayats .....	29
Block Profiles .....	30
Distance to places of importance .....	34
Accommodation .....	34
Hospitals .....	35
Yoga Centres/Libraries/Bookshops/Banks .....	36
Bare Facts .....	37
District Map .....	40

## FOREWORD

The need for a hand book on the districts of Kerala has been felt for some time, especially with the existing ones of the Dept. getting out of print. With the advancement on the travel, tourism and communication fronts, the demand for an updated hand book on the districts, has been on the increase. It is in this context that a new series of District Hand Books have been decided upon, by the Department of Public Relations.

It is hoped that this book would cater to the requirements of the tourist as well as the general public, who seek a handy booklet containing basic information about Thiruvananthapuram district.

Suggestions for improvement are welcome.

Thiruvananthapuram  
22-07-1996

**G. GOPALA KRISHNAN**  
DIRECTOR OF PUBLIC RELATIONS  
(in-Charge)

Quilon or Kollam, an old sea port town on the Arabian coast, stands on the Ashtamudi lake. Kollam, the erstwhile *Desinganadu*, had a sustained commercial reputation from the days of the Phoenicians and the Romans. Fed by the Chinese trade, it was regarded by Ibn Batuta, as one of the five chief ports, which he had seen in the course of his travels during a period of twenty four years, in the 14th Century.

The rulers of Kollam (*Desinganadu*) and China, exchanged embassies and there was a flourishing Chinese settlement at Kollam. Merchant Sulaiman of Siraf in Persia (9th Century) found Kollam to be the only port in India, touched by the huge Chinese junks, on his way from Canton to Persian Gulf. Marco Polo, the great Venician traveller, who was in Chinese Service under Kublahan in 1275, visited Kollam and other towns on the west coast, in his capacity as a Chinese mandarin.

## SHORT HISTORY

The Portuguese were the first Europeans to establish a trading centre at Kollam in 1502. Then came the Dutch followed by the British in 1795. A British garrison was stationed at Kollam in pursuance of a treaty between Travancore and the British.

Velu Thampi Dalawa of Travancore, did much for the improvement of Kollam town. He built new bazars and invited merchants from Madras and Tirunelveli to settle here. Kollam later became the capital of the enlightened and liberal rulers of *Desinganad*. It was also the nerve centre of the rebellion organised by Velu Thampi against the British.

Once a city of palaces, Kollam has been known to the outside world, by the time honoured proverb, "Once you have seen Kollam you would no more need your *illam* (home)".

## TOPOGRAPHY AND CLIMATE

The district is situated on the south west coast of India. It extends from latitude  $9^{\circ} 28' N$  to  $8^{\circ} 45'$  and longitude  $76^{\circ} 28'$  to  $77^{\circ} 17' N$ . The district is bound on the north by Alappuzha district, north east, by the Pathanamthitta district, east, by Thirunelveli district of Tamil Nadu, South, by Thiruvananthapuram district and on the west, by the Arabian Sea. The area of the district is 2,491 sq. kms. and in area the district ranks seventh in the State.

Two rivers, Kallada and Ithikkara, flow through this district. The Sasthamcotta lake, the only major fresh water lake in the State, is here. Two other major lakes are the Ashtamudi kayal and the Paravoor kayal, Edava and Nadayara kayals lie partly in this district.

The district has a tropical humid climate, with an oppressive summer and plentiful seasonal rainfall. The hot season, lasting from March to May, is followed by the southwest monsoon from June to September. The northeast monsoon occurs from October to November. The rest of the year is generally dry.

## FORESTS

The area under forest in Kollam district is 1100 sq. kms. and it falls in Thenmala, Punalur and a portion of Achencoil forest division. Thenmala Range, Aryankavu Range and Shendurney Sanctuary constitute the Thenmala division. Achencoil Range, Kallar Range and Kanayar Range, make up the Achencoil division while Punalur division includes Pathanapuram and Anchal Ranges. Teak and Softwood form the major forest plantations in the district.

## MINERAL RESOURCES

The district is immensely rich in mineral resources. The beach sands of the district have concentrations of heavy minerals like Ilmenite,

Rutile, Monosite and Zircon which offer scope of exploitation for industrial purpose.

Besides, large deposits of China clay in Kundara, Mulavana and Chathannoor, there are also lime shell deposits in Ashtamudi lake, Bauxite deposits in Adichanallur and disseminated graphite in Punalur.

## POPULATION

Sex ratio (defined as the number of females per 1000 males) shows a fluctuating trend from decade to decade. Taking the population in the district as a whole in 1941, 1971, 1981 and 1991, females outnumber males. In all other decades there was a ponderance of males over females. According to the 1991 census there are 1043 females for every 1000 males, while it was 1022 in 1981 census. The scheduled castes and scheduled tribe population of the district came to 3.057 lakhs and 0.038 lakhs respectively.

The density of population of the district has increased from 871 persons per sq. kms. in 1981 to 963 in 1991. The total population of the district is 23.98 lakhs. In population, the district ranks sixth in the state.

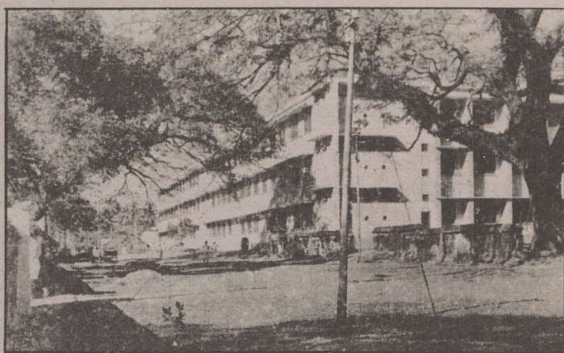
According to 1991 census, this district has a literacy rate of 90.47% against 72.95% in 1981. It was 64.97% in 1971.

The total number of workers in the district is 6,59,650 of which 1,07,638 are cultivators and 1,53,047 are agricultural labourers.

## ADMINISTRATION

The history of the district as an administrative unit can be traced back to 1835, when the Travancore State consisted of two revenue divisions with headquarters at Kollam and Kottayam. At the time of the integration of Travancore and Cochin in 1949, Kollam was one of the three revenue divisions in the state. These three revenue divisions were converted into districts. Shencottah taluk was merged with Madras State consequent on the implementation of the State Reorganisation Act of 1956.

When Alappuzha district was formed in 1957, Chertala, Ambalappuzha, Mavelikkara, Karthikappally, Chengannur and Thiruvalla taluks of Kollam district were united to the new district. When



*Kollam - Civil Station*

Pathanamthitta district was formed on 1st July 1983, the entire Pathanamthitta taluk and nine villages of Kunnathur Taluk of the district were also removed. Now the district has a single revenue division with headquarters at Kollam. Pathanapuram, Kunnathur, Kottarakkara, Karunagappally and Kollam are the five taluks in the district. The district is divided into thirteen development blocks. Kollam, Paravoor and Punalur are the three municipal towns.

## **AGRICULTURE**

The district has a prominent place in the field of agriculture. The total extent of land under cultivation is 2,18,267 hectares. The principal crops are paddy, tapioca, coconut, rubber, pepper, banana, mango and cashew. About 70 percent of the work force is engaged in agriculture.

Coconut gardens extend to about 75,454 hectares. About three hundred and forty three million coconuts are produced every year. The five major crops; paddy, tapioca, coconut, rubber, pepper - are cultivated in an area of 1,73,847 hectares. Small and marginal farmers constitute more than 95% of the farming community and the average per family holding is 0.21 hectare. All the 71 panchayats of the district are covered by separate Krishi Bhavans.

There is an oil palm plantation at Bharatheepuram near Anchal, in an area of 4000 hectares, under the Oil Palm India Ltd., a state government undertaking.

The rehabilitation plantations, another State Government undertaking, is located at Kulathupuzha near Thenmala.

## **IRRIGATION**

With two rivers, the district is endowed with perennial supply of water. In order to augment the irrigation potential, several plans were evolved during 1953 to undertake river basin schemes. Kallada Irrigation Project, the biggest multipurpose project, undertaken by the State Government, is intended to utilise the water of Kallada river, mainly for irrigation purpose in Kollam, adjacent Pathanamthitta and Alappuzha districts. There is also a proposal to generate 50 M.W. of electricity from the dam at Thenmala. The Kallada project comprises of, a masonry dam of 335 m. in length with a maximum height of 81 m. at Parappur in Thenmala across the river to form a reservoir, a pick up weir and sluices at Ottakkal. The 69 kms. right bank canal and the 57.75 kms. left bank canal take off from the pickup weir. It is estimated that the two canals together will serve an area of 68,000 hectares. The projects are aided by the World Bank.

Improvement of Perumkulam yelah in Kollam taluk, West Kallada Scheme in Kunnathur taluk, reclamation of Polachira lake in Kollam taluk and Ithikkara yelah schemes, are the medium irrigation schemes in the district.

While major and medium irrigation schemes are being taken up by the state government directly, individual minor irrigation schemes, viz., dug-wells, bore-wells, tube-wells, pump sets, drip and sprinkler irrigation systems are being financed by commercial co-operative banks.

## **ANIMAL HUSBANDRY**

Kollam district ranks first in livestock wealth in the State. Dairy farming is fairly well developed. There are 3.12 lakh milch cattle (1987-88 live stock census). A net-work of one district veterinary centre, 2 poly-clinics, 48 veterinary dispensaries, 14 veterinary hospitals; and 167

artificial insemination centres, cater to the needs of the district. The number of cows increases annually by five per cent. There are about 65 milk producers co-op. societies and three chilling plants. The chilling plants are located at Kollam, Kottarakkara and Yeroor. The milk producers co-op. societies handle about 3.34 lakh litres per day. The Kerala Livestock and Dairy Development Board, has a master plan to increase dairying. In poultry, the district stands third and there is great scope for developing broiler and layer poultry farms. The district is covered by the Integrated Dairy Development project. 'Mini-Dairy' Special Project is under implementation, sponsored jointly by MILMA and NABARD.

## **FISHERIES**

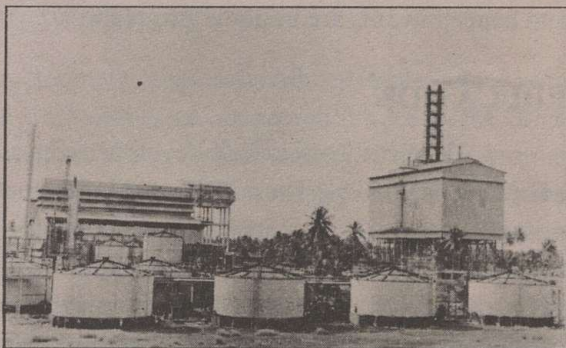
Kollam is an important maritime district of the state with a coast line of 37.3 kms. Fishing has a prominent place in the economy of the district. Neendakara and Sakthikulangara are villages which thrive in fishing. An estimated number of 23,000 persons are engaged in fishing and allied activities. Cheriazheekkal, Alapad, Pandarathuruthu, Puthenthura, Neendakara, Thangasseri, Eravipuram and Paravoor are eight among the 26 important fishing villages. There are 24 inland fishing villages also. Considering the unique location and infrastructure available, the Government has initiated steps for establishing a fishing harbour at Neendakara which is expected to augment fish production by 15%. Average fish landing is estimated to be 85,275 tonnes per year. One third of the state's fish catches are from Kollam.

There are 93 producer co-operatives, two credit co-operatives and one marketing co-operative in the fisheries sector. There are 38 Fishermen Development Welfare Co-op. Societies in the district. Nearly 3000 mechanised boats are operating from the fishing harbour. FFDA and BFFDA are promoting fresh water fish culture and prawn farming respectively. A model Fishing Village with 100 houses is coming up at Eravipuram. A model prawn farm is coming up at Ayiramthengu and a few new hatcheries are also coming up to cater to the needs of the aquaculturists.

About 60% of the production of prawn in the state is from this district.

## INDUSTRIES

There are 17 large, and one medium scale industries in the district, of which, two are Central Government undertakings i.e., the India Rare Earths, Chavara and Parvathi Mills Ltd., Kollam.



*Kerala Minerals and Metals Ltd., Chavara*

Kerala Ceramics Ltd., Kundara, Travancore Plywood Industries, Punalur, Kerala Electricals and Allied Engineering Company, Kundara, Kerala Premo Pipe Factory Chavara, Kerala Minerals and Metals Limited, Chavara, United Electrical Industries Kollam, the Kerala Agro-Fruit Products, Punalur are Kerala Government owned companies. Other major industries in private/co-operative sector are - Aluminium Industries Ltd., Kundara, Thomas Stephen & Co., Kollam, Floorco Paravur, Co-operative Spinning Mill, Chathannur and Punalur Paper Mills, Punalur. About 8622 SSI units have been registered in the district.

Cashew processing and Coir production are also major industrial vocations of the district. Handloom industry, Clay and wood based industries also contribute to the industrial advancement of the region.

### Cashew

Cashew processing is a major industrial activity in the district. The Kerala State Cashew Development Corporation (KSCDC) is the

largest processor of cashewnut in the world. At present, it has 34 factories. K.S.C.D.C. provides employment to more than 26,000 workers.

K.S.C.D.C. exports cashew kernels and cashewnut shell oil. It also manufactures tannin from cashew testa; a by-product. The available rawnuts in the state can feed the factories to only one third of its capacity and hence rawnuts are imported from abroad.

## **EDUCATION**

The district offers well-developed educational facilities. The rate of literacy is 90.47%. The educational infrastructure includes 479 lower primary schools, 213 upper primary schools, 208 high schools, 13 arts and science colleges, 8 teachers training centres, 2 training colleges 30 ITIs/ITCs, one junior technical school, one polytechnic and one engineering college. Besides, there are 1072 anganvadi centres too. All the colleges, A & S colleges except a junior college at Chavara are in the private sector.

### **Arts and Science Colleges**

S.N. College, Kollam, S.N. College for Women, Kollam, F.M.N. College, Kollam, T.K.M. College of Arts and Science, Karikode, N.S.S. College, Nilamel, St. Gregorious College, Kottarakkara, S.N. College, Punalur, St. Stephen's College, Pathanapuram, D.B. College, Sasthamcotta, St. John's College Anchal, S.N. College, Chathannur, Government College, Chavara, M.M.N.S.S. College, Kottiyam.

### **Professional Colleges**

T.K.M. Engineering College, Kollam, Karmala Rani Training College, Kollam, Mount Taber Training College, Pathanapuram

## **PUBLIC HEALTH**

The medical facility network is well established in the district with 9 Govt. Hospitals, 16 Primary Health Centres, 47 Mini Public Health

Centres in Allopathy, 9 Hospitals, 38 dispensaries in Ayurveda, 3 hospitals and 27 dispensaries in Homeopathy. In addition, there are a number of Allopathic, Ayurvedic and Homeopathic hospitals and dispensaries in the private and co-operative sectors.

## **COMMUNITY DEVELOPMENT**

Community Development schemes have been implemented with great enthusiasm. These programmes are sponsored/funded by the Govt. of India, the Govt. of Kerala, or jointly by their agencies, with or without the financial support of credit institutions. The massive poverty alleviation programme IRDP, the programme aimed at improving the quality of life of rural women and children living below the poverty line DWCRA, the programme providing technical and managerial skills to the rural unemployed youth hailing from the families below the poverty line - TRYSEM, the programme providing opportunities to the educated unemployed youth to undertake self-employment ventures - PMRY, have been extended to all the 13 blocks, of the district. Besides, various schemes are implemented separately for the welfare of the SC/ST population.

## **TRANSPORT**

### **Railways**

The district is covered by 132 kms. of railway line, of which 51 kms. are broad gauge and 81 kms., metre gauge. There are 22 railway stations of which 9 are on broad gauge line and 13, on the metre gauge line. Kollam is an important railway junction. The Trivandrum-Ernakulam (via Kottayam and Alappuzha) line pass through Kollam. Kollam is the terminal junction of Madras - Egmore - Kollam metre gauge line.

### **Road Transport**

Kollam has a total 9127 kms. of roads. The National Highway 47 covers a distance of 57.4 kms. in the district. The State Highway, namely,

Main Central Road, Kollam-Shencottah Road and Punalur-Palamuvattupuzha Road (Main Eastern Highway) with a total length of 266.52 kms. also networks the district.

Kerala State Road Transport Corporation has two district offices in Kollam.

## Water Transport

The water transport department operates boat services to Muthiraparamb (West Kallada), Guhanandapuram, Ayiramthengu, Munrothuruthu and Alappuzha. The Alappuzha service opens a vast vista of tourist attraction. A full day onboard journey through the backwaters provide an opportunity to witness the natural life of the people around and enjoy the scenic beauty of the place. Luxury boats, both of the Government and private parties, operate from the main boat jetty during the season. The west coast canal system, which starts from Thiruvananthapuram in the south and ends at Hosdurg in the north, passes through Kollam and Karunagappally taluks. The Thiruvananthapuram-Shornur canal, which forms part of the above system, runs a distance of about 62 kms. The other canals are paravur canal, Kollam canal and Chavara canal. The water transport department of the state, transports over 70,000 passengers. The daily income in this account is over Rs. 85,000/-.



*Serene back waters;  
a scenery, typical of Kerala*

## Port

Neendakara and Kollam are the two ports in the district, the former an intermediary and the latter a minor port. Port operations are carried out through Neendakara.

## POST & TELEGRAPH

There are 4 head post offices, 98 sub post offices, 190 branch post offices and 52 E.D. post offices in the district. The number of telegraph offices is 140 and that of telephone exchanges is 54. The central telegraph office is at Chinnakkada.

## MASS COMMUNICATION

There are a number of daily newspapers published from this district of which, *Kerala Kaumudi* and *Malayala Manorama* are morning dailies and *Kerala Rajyam*, *Vartha Rahasyam*, *Sayanha Sabdam*, *Kerala Malar*, *Jayasoorya*, *Prasanthi*, *Thrikonam*, *Citizen Times*, *Yuva Express*, *Nattu Vartha* and *Rashtra Deepika* are evening dailies. *Kumari*, *Kumkumam*, *Kerala Sabdam* and *Nana* are weeklies and *Mahilarettnam*, *Kasturi*, *Chithra Katha* (Malayalam and Tamil) and *Career*, are the monthlies published from this district. The only fortnightly, is *Muthassi*.

## CULTURAL CONTRIBUTIONS

Kollam, the capital of the erstwhile *Venad*, was a great centre of learning and culture. It attracted distinguished scholars from all parts of South India. *Leelathilakam* and *Unnuneelisanandesam*, two outstanding literary works of historical importance, are contributions of 14th Century Kollam. The dance form of *Kathakali* in its new version of *Ramanattam* was the creation of Kottarakkara Thampuram, who also improved *Krishnanattam* by substituting Malayalam for Sanskrit.

Paravoor K.C. Kesava Pillai, a gifted poet, prose writer, dramatist and scholar, originated the musical play in Malayalam through his work

*Sadarama*. His *Kesaveeyam*, a Mahakavyam, is of outstanding literary importance. In the history of Malayalam music, he has a prominent place as a gifted composer of songs. Paravoor Kesavan Asan, the founder editor of *Sujananandini*, another prominent literary figure, was a journalist and a prose writer of eloquence. His *Saratchandrika* is a contribution to the study of Ayurvedic system of medicine. E.V. Krishna Pillai, another literary celebrity has etched his name in the field of humour and satire. C.V. Kunjuraman, editor of Kerala Kaumudi and Malayalarajyam was a poet, literary critic, prose writer and a journalist of outstanding distinction.

Coming to modern times, Elamkulam Kunjan Pillai and Sooranadu Kunjan Pillai, noted literary historians and poets like O.N.V. Kurup, Thirunalloor Karunakaran, Punalur Balan, novelist and poet Lalithambika Antharjanam are some of the literary luminaries hailing from this district.

Leaders like T.M. Varghese, C. Kesavan, Kumbalathu Sanku Pillai, N. Sreekantan Nair, R. Shankar and C.M. Stephen who played prominent roles in shaping the socio-political destiny of the State, are also from this district. The district gave birth to well known freedom fighters like Chandiran Kali Ambi (Kadakkal Manthri) and Franco Raghavan Pillai.

## IMPORTANT RELIGIOUS CENTRES

Kollam district has a number of pilgrim centres. The temples dedicated to the *Sastha* at Achencoil, Aryankavu and Kulathuppuzha are visited by a large number of pilgrims. The festivals *Therottam* and *pushpabhishekam* of Achencoil Temple fall during December-January and January-February respectively. The *Mandala Pooja* of Aryankavu Temple, is in December and the *Vishumahotsavam* of Kulathuppuzha in April. The Oachira Temple, dedicated to *Parabrahmam* attract a large number of pilgrims, particularly during the festival called *Oachirakkali* in June-July. The *Panthranduvilakku* Mahotsavam (November-December) of this temple is also very famous *Vishu* Mahotsavam (April) of Sreekrishna Swami Temple, Ashramam; *Navarathri* Mahotsavam (October) of

Mahadeva Temple, Anandalalleswaram; *Utsavam* (March) of Murari Temple Mukhathala, *Utsavam* of Mahadeva Temple Thrikkadavur and Bhagavathi Temple Kottamkulangara; *Sivarathri* festival (March) of Siva Temple, *Chittadeeswaram*, Festival (September-October) of Veera Bhadra Nada, Ashtamudi; *Kuruthi* Mahotsavam (January) of Ammachiveetil Moorthi Temple, Kacherimukku, *Sivarathri* Mahotsavam (March) of Kashi Viswanathan at Cheriazeekkal (Karunagappally Taluk) *Thiruvathira* Mahotsavam (April) of Shri Mahaganapati Temple, Kottarakkara are some of the important festivals connected with temples. The *Ashtami Rohini* festival at Vadayattukotta Sreekrishna Temple also attracts huge crowds from neighbouring places. In addition to these temples, there are Churches and Mosques which have their own festivals attracting huge crowds, irrespective of their religious affiliation. Some of the important Churches are St. Casimir's Church, Kadavur; Velankanni Matha Shrine, Tuyyam; Infant Jesus Shrine, Vadi; St. Joseph Shrine, Perinad; St. Francis Church, Koduvila (Kallada); Amalotbhava Matha Church, Pullichira (Kottiyam); St. John Britto Church, Sakthikulangara; St. Sebastians Church, Neendakara; St. Thomas C.S.I. Church, Pattathanam and St. Thomas Orthodox Cathedral, Sastri Junction.

Valiyapalli, Jonakappuram; Juma-Ath-Palli, Kolluvila; Juma-Ath-Masjid, Thattamala; Muslim Juma-Ath-Palli, Karuva; Kalamala Palli, Kalamala; Muthirapparambu Palli, Muthirapparambu and Siyavathummodu Palli, Kilikolloor are the most important mosques.

## FESTIVALS

In addition to the traditional past times like *Kathakali*, *Koothu*, *Ottamthullal*, *Pattakam*, *Harikatha*, *Kaikottikkali*, *Thiruvathirakkali*, *Kolattam* etc., there are certain amusements and festivities which are unique to Kollam district. They are held in connection with festivals in temples. The mock sword-fight - *Oachirakkali*, is one of the most important of such festivals. Oachira has been famous for long as one of the sacred places of Kerala. Historically too this place is very famous, for, it was on the plains of Oachira that the much famed battle in the history

of Travancore, the battle of Kayamkulam, was fought between Marthandavarma, the Maharaja of Travancore and the Raja of Kayamkulam. In commemoration of this historic battle *Ochirakkali* is conducted on the first and second of *Mithunam* (June-July) every year. On this occasion, the young and the old, drawn from the two Karas lying east and west of Oachira, form themselves into two groups, reach the *Padanilam* (the place for fighting) and conduct the age-old fencing exercises under the leadership of the elder *kalari asan*.

In Kottamkulangara Temple in Chavara, there is a peculiar custom of men dressing up as women and carry lighted lamps (Thalappoli). The *Uriati* is a typical festival associated with Krishna Temple. The annual *Uriati* festival held at Vadayattukotta temple in connection with *Ashtami Rohini* deserves mention. The *Kettukazhcha* (exhibition of effigies) festival held at Mahadevar Temple, Thrikkadavur in February-March every year is one of the colourful festivals of the district. There are similar festivals in the temples of Sasthamcottah, Velinallur, Chathannur, Chirakkara etc.

## PLACES OF INTEREST

### Achencoil

Situated about 80 kms. from Punalur, Achencoil is an important pilgrim centre. The Sastha temple here, is situated amidst dense forests. The idol of Sastha is supposed to have been installed several centuries before the Christian Era. The two important festivals of this temple are *Mandala Pooja* (December-January) and the festival held at '*Ravathi*' (January-February). The two notable features of the festival are the *Therotam* (chariot festival) and *Pushpabhishekam* (offering of flowers). In no other temple of South India are flowers offered to the deity so lavishly as at Achencoil.

### Anchal

Situated 13 kms. south of Punalur, Anchal is known for its cattle

market held twice a month. The *Mudi* festival of the Bhagavathy temple here, conducted once every 12 years, attract huge gatherings.

## Aryankavu

Situated about 73 Kms. east of Kollam, Aryankavu is one of the important pilgrim centres of the district. From very early days, it was an important trade route for merchants from either sides of the Western Ghats. The chief attraction of Aryankavu is the Shrine dedicated to Lord Sastha. The temple has some fine sculptures and mural paintings. Thousands of pilgrims flock to this temple during the *Mandala Pooja* and *Thrikalyanam* festivals in December. All trains towards Shencottah have a stop at Aryankavu. Buses plying between Kollam & Shencottah, also pass through this place.



*Palaruvi Water Falls,  
- refreshingly beautiful*

About 5 kms. away from Aryankavu there is a big waterfall know as *palaruvi* meaning *river of milk*. It is one of the well-known waterfalls in south India, falling from a height of 300 feet. It is situated 66kms. from Kollam on Kollam-Shencottah road. The scenic beauty, with the hills, valleys and cascades, covered with dense tropical forests, is breath taking. Season to visit the place is June-January.

## Chavara

Chavara is situated 14 kms. north of Kollam on the Kollam-Alappuzha road. Thousands of tonnes of mineral sand are exported from

Chavara to various countries. The Koilthottam port is situated within the limits of Chavara panchayat. Four major industrial establishments - Indian Rare Earths, The Kerala Premopipe factory, Kerala Minerals and Metals and the Titanium complex - are at Chavara. The *Thalappoli Mahotsavom* - offerings of lighted lamps in decorated small pans - in the Kottamkulangara temple here is very famous. It falls in March-April. The interesting feature of the festival is that men dress themselves as women and carry lamps. This is a time-honoured custom.

### **Karunagappally**

Karunagappally is situated 27 kms. north to Kollam. It is linked with Kollam by rail and road. There is a mini civil station at Karunagappally. Padayanarkulangara, which forms part of the town, was once the military station of the Kayamkulam Rajas. An idol of Buddha, recovered from a local tank here, is now preserved in the Krishnapuram Palace, situated north of Oachira. The town has a temple dedicated to Lord Siva, two old mosques and a Mar Thoma Church.

### **Kottarakkara**

Kottarakkara is the headquarters of Kottarakkara taluk. It is linked with Kollam, both by road and rail, a distance of 27 kms. It was once the capital of Elayadathu Swarupam, a principality ruled by a branch of the Travancore Royal Family. The internationally famous dance drama *Kathakali* had its small beginnings in this town and it flourished under the patronage of Raja of Kottarakkara who lived in the first half of the 19th century. Kottarakkara has a very old temple dedicated to Lord Ganapathy and a church belonging to Mar Thomas. This church is 700 years old.

### **Kulathupuzha**

Kulathupuzha is situated on the Thiruvananthapuram-Shencotta road and is 10 kms. south of Thenmala Railway Station. Kulathupuzha is an important forest range, well known for its elephants. Reed, an

essential raw material for paper manufacture at Punalur Paper Mill, is partly supplied from Kulathuppuzha Valley. One of the renowned shrines dedicated to Lord Sastha, is found here and large crowds of pilgrims come for worship during festival seasons. The Vishu Mahotsava in April-May is the most important festival here. Besides this shrine, there are also three mosques.

## **Kundara**

Kundara is linked with Kollam by rail and road; a distance of 14 kms. Large deposits of China Clay discovered here, helped in the establishment of the Government Ceramics concerns. The Aluminium Industries (ALIND) is one of the leading Indian firms manufacturing aluminium cables. Kundara is famous in history, for, it was from here that Veluthampi Dalawa issued the famous *Kundara Vilambaram* in 1809.

## **Kunnicode**

The main attraction of Kunnicode, situated 10 kms. west of Punalur, is *Pachilakunnu* a small hillock where a Muslim saint is said to have breathed his last.

## **Mayyanad**

Mayyanad, 10 kms. south of Kollam, is noted for its Shrines and temples. The most important temple is the one at Unayanalloor, dedicated to Lord Subramoniya. The shrine is said to have been consecrated by Shri. Sankaracharya of Kaladi. Besides the temples, there are three churches and a mosque. Cotton weaving and oil pressing are the main occupations in the village. Mayyanad is the birth place of C.V. Kunjuraman, one of the leading literary, social and political figures of modern Kerala.

## **Neendakara**

Situated about 8 kms. north of Kollam, Neendakara is the headquarters of the Indo-Norweigian Fisheries Community Project,

which was established in 1953. The important institutions under this project are the boat building yard at Sakthikulangara, the Fisherman's Training Institute, the ice factory and the refrigeration plant.

Improvements have been made to Neendakara Port, which has been thrown open to traffic.



*The Neendakara bridge over the Ashtamudi Lake on N.H. 47*

## **Oachira**

Situated 32 kms. north of Kollam on the Kollam-Alappuzha National Highway and on the boundary of Kollam district, Oachira is a unique pilgrim centre. The peculiarity of the temple here is that there is no temple building as such nor is there any idol. All classes of people worship the presiding deity the *Parabrahmam*. Oachira draws thousands of pilgrims for *Oachirakkali*, a festival held annually in June. Another festival held here is *Panthrandu Vilakku* in November-December, which lasts for 12 days. The festival is also followed by a fair which attracts thousands of pilgrims from all walk of life. Oachira is also an important handicraft centre where fancy articles of screwpine mats are manufactured.

Known also as *Dakshina Kasi*, buses passing through N.H. 47 stop at Oachira. Passenger trains stop at Oachira Railway Station.

## **Paravur**

Paravur is an important fishing and coir production centre. It is situated 13 kms. South of Kollam and is connected with Kollam town by road and rail. It is the birthplace of K.C. Kesava Pillai (1865-1913) and Kesava Asan (1869-1917), two leading literary men of eminence.

## Pathanapuram

An important trading centre on the banks of the Kallada river, Pathanapuram is 13 kms. away from Punalur. The *Chandanakkudam* mahotsava of the mosque there, celebrated every year in February-March, attracts thousands of devotees.

## Pattazhi

Pattazhi is the seat of an ancient temple, dedicated to Bhagavathy. The *Mudi* is the major festival of this temple.

## Punalur

Punalur is one of the important industrial centres of Kerala. It is 45 kms. from Kollam on the Kollam-Shencotta railway line and is also linked with Kollam by road. The Punalur Paper Mills, started as early as 1885, is one of the main factories.



*The suspension bridge at Punalur, across the Kallada river. This bridge is now of archaeological interest;- a souvenir of British engineering of yore.*

The suspension bridge across the Kallada river, erected in 1877, is the only one of its kind in

south India and it is 400 ft. long. A concrete bridge has been constructed nearby and now the suspension bridge is only of archaeological interest. The temples here, dedicated to Lord Ayyappa, Lord Krishna, Lord Siva and Goddess Bhagavathy, attract huge gatherings during festival season. There are two Roman Catholic Churches too, at Punalur. The chief commodities of export here are the hill produces, pine-apple, pepper

products, plywood and timber. Punalur is the head quarters of Pathanapuram taluk.

## Kollam Town

Kollam town, the headquarters of Kollam district and Kollam taluk, has a hoary past. It was an international emporium of trade and even now it is a prosperous commercial centre. It is situated about 71 kms. north of Thiruvananthapuram and is linked by rail, road and backwater transport. The town edges with the famous Ashtamudi lake. Many a foreign traveller has visited Kollam in the early midieval period. It was one of the early centres of Christian activity in Kerala. It is said that the present town of Kollam was built by the Syrian Merchant; Sapir Iso, in the 9th Century A.D. The popularity of Kollam has been established by the time honoured proverb *once you see Kollam, you will not need your home any more*. Kollam is an important commercial, industrial and trading centre. It is also the headquarters of the Kerala State Cashew Development Corporation.

The 144 ft. Thangassery Light house, built in 1902, is a centre of attraction. The Ananda Valleeswaram Temple here, attracts people on almost all days. There are several Churches and Mosques in and around Kollam. The Pullichira Church was established in 1700 A.D. One of the oldest and most important Mosques in the town is the Chinnakkada Palli. The Thangal Kunju Musaliar College of Engineering, the first of its kind in the private sector in the state, is at Kilikolloor, about 7 kms. east of Kollam town.

Mahatma  
Gandhi beach &



*Silhoutte at sunset - Tirumullavaram beach*

park at Kochupilamoodu, Thirumullavaram beach and Ashramam picnic village, are some of the important spots of local sight seeing. Mahatma Gandhi beach lies just 2 kms. from the town. It is a fascinating place for an evening. Thirumullavaram Beach is 5 kms. from the town. The sea here is ideal for swimming and bathing. Ashramam picnic village is located in the 48 acre Guest House Complex. This is the centre of various tourism development activities of the district. The setting up of a picnic village here, is progressing under the supervision of the District Tourism Promotion Council. The Government Guest House here, is 200 years old. It stands along Ashtamudi lake and is a major attraction for its elegance and architectural beauty. Tourists can stay here at economical rates. The children's Traffic & Entertainment Park, designed by NATPAC, is also located in this village. It is the largest traffic park in Kerala. The Adventure



*The 200 year old Government Guest House at Ashramam*

Park, located in the village along the shores of the Ashtamudi backwaters, is a novel experiment in the country. Different types of boats, including luxury cruise boats, power boats and motor boats, are available on hire from the boat

jetty near to the Adventure Park. A budget hotel for tourists. *Yatrinivas*, run by Kerala Tourism Development Corporation, is also located in this village. The village is just 2 kms. away from the town.

## **Sasthamcottah**

Sasthamcottah is an attractive village situated about 19 kms. from Kollam town. It is a beauty spot, a health resort and a centre of pilgrimage.

The extensive freshwater lake here, is said to be the biggest of its kind in Kerala. Water supply to the Kollam town is met by purifying the water from this lake. Buses are frequently operated to Sasthamcottah, which can truly be called as *Queen of Lakes*.

## Thangassery

Thangassery is a place of historical importance situated 5 kms. away from Kollam town. The Churches here are pretty old, having been established in the 18th century. The chief attraction of the place is the light house, built in 1902. The 144 ft. light house stands as a sentinel, warning seamen of the treachrous reefs of Thangassery. The construction of a fishing harbour is in progress. Thangassery was an enclave of the Portuguese, Dutch and British in succession. The remnants of the Portuguese and Dutch forts still exist.



*A silent sentinel since the turn of the century;- the Thangassery light house*

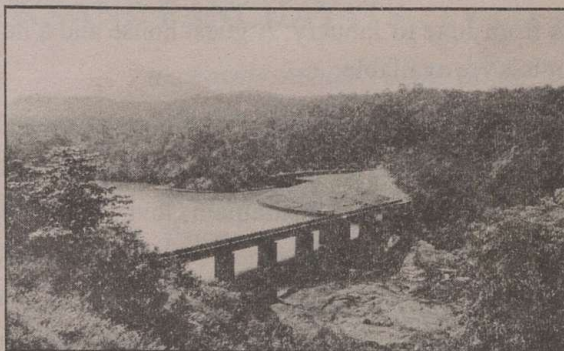
## Thazhava

Thazhava in Oachira Block, is an important centre of screw-pine mat industry. An image of the Buddha, discovered from a tank known as *Pallikkulam* near Maruthookulangara, is one of the interesting archaeological relics, associated with Kollam district.

## Thenmala

Thenmala is the meeting point of Kollam-Shencottah road and Thiruvananthapuram-Shencottah road, surrounded by dense forests, 66 kms. east of Kollam. There are a large number of rubber and tea

plantations in Thenmala. Timber of all varieties are exported from here to all parts of the country. Thenmala dam site is open for tourists. All buses passing through Kollam-Shencottah road, stop at Thenmala. There is also a Railway Station here.



*Thenmala dam - Nature at its pristine best*

## **Jetayu Para**



*Jadayu Para;- of epic origin*

Jetayu Para, a huge rock, is another attraction in Kollam district. This huge rock is in the Chadayamangalam village on the M.C. road. The name comes from the epic Ramayana. It is believed that Jatayu, the giant bird in the

epic, fell after failing in its attempt to stop Ravana from taking Sita away. The rock is ideal for trekking by the lovers of adventure. The rock can be seen from the Chadayamangalam Jn. itself.

## **Courtalam falls**

Though the famous waterfall at Courtalam is situated in Tamil Nadu state, it shares the boundary of Kollam also. Season to visit the place

is from June to January. A guest house and a number of medium range hotels are available.

The District Tourism Promotion Council, chaired by the District Collector, offers tourist information and assistance. The Office of the Council is situated at Ashramam Govt. Guest House Complex. There are Tourist Information Centres at Railway Station, Kollam and Kerala State Road Transport Corporation, Central Bus Station, Kollam. Tourist Information, tourist literature, hotel/boat/bus reservations etc. can be had from these places. Information can also be had from the Informatics Centre and the District Information Office, Civil Station, Kollam.

Railway Station at Kollam is situated just 1 km from the heart of the town, Chinnakkada. This junction is a major stop for all express, superfast and passenger trains. KSRTC operates Deluxe, Express and Fast Passenger, buses connecting important towns in the state. Ferry services are operated from Kerala State Water Transport Corporation boat jetty near KSRTC Central Bus Station, Kollam to various islands in the Ashtamudi backwaters. Tourist boat services are also operated between Kollam and Alappuzha during season.

Thiruvananthapuram International Airport (75 Kms.) and Kochi Airport (150 Kms.) are the nearest airports.

State Bank of Travancore, State Bank of India and all other Nationalised Banks have foreign exchange facilities at Kollam.

Head Post Office, Kollam (at Chinnakkada), Speed Post Counter - Head Post Office building, Chinnakkada, Telegraph Office Chinnakkada and Police (a) General Enquiry Telephone No: 100 (b) Police Station (East) opposite Railway Station near Chinnakkada (c) Police Station (west) Near Civil Station, about 2 kms. from Chinnakkada.

## BLOCKS AND PANCHAYATS

<i>Name of Block</i>	<i>Panchayats included in the Block</i>
<b>Anchal</b>	1. Alayamon 2. Arichal 3. Aryanakavu 4. Edamulakkal 5. Karavalloor 6. Kulathuppuzha 7. Thenmala 8. Yeroor
<b>Anchalummood</b>	1. Kilikolloor 2. Sakthikulangara 3. Thrikkadavoor 4. Thrikkeruva
<b>Chadayamangalam</b>	1. Chadayamangalam 2. Chithara 3. Elamad 4. Ittiva 5. Kadakkal 6. Nilamel 7. Velimalloor
<b>Chavara</b>	1. Chavara 2. Neendakara 3. Panmana 4. Thekkkumbhagom 5. Thevalakkara
<b>Mukhathala</b>	1. Eravipuram 2. Kottamkara 3. Mayyanad 4. Thrikkovilvattom 5. Vadakkevila
<b>Chittumala</b>	1. East Kallada 2. Kundara 3. Munroe Thuruthu 4. Perayam 5. Perinad
<b>Ithikkara</b>	1. Adichanalloor 2. Chathannur 3. Kalluvathukkal 4. Nedumpana 5. Paravoor 6. Poothakkulam
<b>Karunagappally</b>	1. Alappad 2. Karunagappally 3. Mynagappally 4. Thodiyoor

<b>Kottarakkara</b>	1. Ezhukone 2. Kareepra 3. Kottarakkara 4. Neduvathoor 5. Pooyappally 6. Veliyam
<b>Oachira</b>	1. Clappana 2. Kulasekharapuram 3. Oachira 4. Thazhava
<b>Pathanapuram</b>	1. Pathanapuram 2. Pattazhy 3. Pattazhy Vadakkekara 4. Piravanthoor 5. Thalavoor 6. Vilakudy
<b>Sasthamcottah</b>	1. Kunnathur 2. Poruvazhy 3. Sasthamcottah 4. Sooranad North 5. Sooranad South 6. West Kallada
<b>Vettiakkavala</b>	1. Kulakkada 2. Melila 3. Mylom 4. Pavithreswaram 5. Ummannoor 6. Vettikkavala.

## BLOCK PROFILES

### **Anchal**

Anchal falls mainly in the highland region of Pathanapuram taluk and covers an area of 950.77 sq. kms. It comprises of eight panchayats Kulathuppuzha, Eror, Alayamon, Anchal, Edamulakkal, Karavaloor, Thenmala and Aryankavu. The tribal settlements are mainly in Kulathuppuzha and Thenmala ranges. The block is conspicuous for its rubber and oil palm plantations. The Thenmala and Kulathuppuzha ranges are resplendent in scenic beauty.

### **Anchalummood**

Located on the northern side of Kollam Taluk and Kollam municipal town, it covers an area of 53.61 sq. kms. Coir is one of the

important industrial activities in the block, especially in Thikkadavur and Thrikkaruva panchayats. The other two panchayats Kilikolloor and Sakthikulangara are noted for Cashew/Wood industries and fishing respectively. Population - 0.16 lakh.

### **Chadayamangalam**

It is situated on the south eastern side of Kottarakkara Taluk. This is one among the large blocks in the district with an area of 249.03 sq. kms. Paddy, coconut, rubber, tapioca, pepper, cashew, banana, arecanut etc. are the major crops under cultivation in the block. Two industrial estates and five industrial co-operative institutions are functioning here. Population - 0.20 lakh. Panchayats - Chithara, Kadakkal, Chadayamangalam, Ittiva, Velinalloor, Elamadu and Nilamel.

### **Chavara**

Chavara is a predominantly coastal block, on the southern part of Karunagappally taluk. The soil of the block is sandy except in certain parts of Thevalakkara and Thekkumbhagom where laterite and clay soil is found. There are four major industrial establishments here viz, Indian Rare Earths, The Kerala Premo pipe factory, Kerala Minerals and Metals Ltd. and The Titanium Complex. Two mini industrial estates are also there in the block. Being a coastal block, large number of persons are engaged in fishing and fish processing. Coir is another major industrial activity. Area - 74.90 sq. kms. Panchayats - Chavara, Panmana, Thevalakkara, Neendakara and Thekkumbhagom. Population - 0.14 lakh.

### **Chettumala**

Chettumala is in the north eastern side of Kollam taluk. The block consists of five panchayats viz., Munroe Thuruthu, East Kallada, Perayam, Kundara and Perinad covering an area of 77.01 sq. kms. The soil structure is laterite and alluvial and coconut, paddy, cashew, pepper, tapioca and

banana are the main crops cultivated in this block. A sizeable population of the block are fishermen. Population - 1.18 lakh.

### **Ithikkara**

Ithikkara is situated on the south east part of Kollam taluk, covering an area of 134.80 sq. kms. Agriculture is the main occupation of the people. Majority of the cultivators are small and marginal farmers. Coir units, manufacturing of country bricks and tiles, Khadi spinning and weaving etc. are major industrial activities. Population - 1.85 lakh. Panchayats - Chathannoor, Kalluvathukkal, Nedumpana, Paravur, Poothakkulam and Adichanallur.

### **Karunagappally**

Karunagappally block consists of 4 panchayats viz., Allappad, Karunagappally, Thodiyoor and Mynagappally, covering an area of 66.34 sq. kms. The block is industrially forward because of its advantageous location on National Highway near to Sea. It is connected by rail also. Coconut, paddy, tapioca, banana etc. are the main agricultural crops. Prominent small scale and cottage industries are based on bricks, well ring making, engineering and electronic items handicrafts etc. Population 1.45 lakh.

### **Kottarakkara**

Kottarakkara lies in the western part of Kottarakkara taluk. Agriculture is the main occupation of the people. The major agricultural crops are paddy, pepper, coconut, arecanut, tapioca, cashew, rubber etc. Area - 133.10 sq. kms. Population - 1.54 lakh. Panchayats - Kottarakkara, Neduvathoor, Ezhukone, Kareepra, Pooyapally and Veliyam.

### **Mukhathala**

Mukhathala is one of the thickly populated blocks in the district. Agriculture is the main occupation of the people. Major industrial

activities are related to cashew, wood matches, oil, engineering, bricks etc. There are two industrial estates in the block, one at Kannanallur and the other at Umayanallur. Population - 2.54 lakh. Area 80.11 sq. kms. Panchayats - Mayyanad, Eravipuram, Vadakkevilla, Thrikkovilvattom and Kottamkara.

## **Oachira**

Oachira block consists of 4 panchayats viz., Oachira, Clappana, Kulasekharapuram and Thazhava. The soil condition of the block is sandy except in Pavumba village which is gravelly. Agriculture is the main occupation of the people. Paddy, arecanut, coconut, pepper, cashew etc. are the main crops. Kayamkulam lake lying on the western side of the block to a length of 15 kms. and the Arabian sea provide ample scope for fishing activities. Population - 1.23 lakh. Area 6324 hectreres.

## **Pathanapuram**

Pathanapuram is situated on the eastern part of the district, it covers an area of 248.32 sq. kms. Live-stock activities like dairying, poultry, goat rearing etc. and industrial activities like brick making, bamboo weaving etc. are the main occupations. The block is rubber predominant. Population - 1.57 lakh. Panchayats - Pathanapuram, Pattazhivadakkekara, Piravanthoor, Thalavoor, Vilakudy and Pattazhy.

## **Sasthamcotta**

Sasthamcotta is situated on the north east corner of the district. Soil is laterite. The major cultivated crops are paddy, tapioca, banana, cashew and pepper. Area - 118.41 sq. kms. Population - 1.42 lakh. Panchayats - Kunnathoor, West Kallada, Sasthamcottah, Sooranad South, Sooranad North and Poruvazhy

## Vettikkavala

Vettikkavala comes under Kottarakkara taluk. Ummannoor, Pavithreswaram, Kulakkada, Mylom, Melila and Vettikkavala are the panchayats. The block has a total area of 169.47 sq.kms. Population 1.77 lakh.

### Distance to various places of importance from Kollam and time taken by Bus

Place	Distance in Kms.	Time taken
Alappuzha	87	2 hrs.
Bangalore	657	19 hrs.
Kanyakumari (Cape Comorin)	160	5 hrs.
Kasargod	582	12 hrs.
Kovalam	86	3 hrs.
Madras	663	16 hrs.
Mangalore	634	15 hrs.
Palakkad	310	7 hrs.
Shencottah	98	3.30 hrs.
Thekkady	220	7 hrs.
Thiruvananthapuram	72	2.30 hrs.
Thrissur	229	5.30 hrs.
Varkala	20	1 hr.

### ACCOMODATION

- Rest House Kollam
- Rest House, Karunagappally
- Rest House, Punalur
- Guest House, Kollam
- Yatri Nivas, Kollam

## **Hotels (Private)**

1. Hotel Sudarshan, Hospital Road
2. Hotel Shah International, Chinnakkada
3. Hotel Prasanth, Kochupilammudu
4. Hotel Karthika, Main Road, Chinnakkada
5. Hotel Seabee, Hospital Road
6. Hotel Ambadi, Beach Road
7. Hotel Lakeview (Lakeside hotel) Thoppilkadavu
8. Hotel Checkmate (Beachside hotel), Thirumulavaram
9. Hotel Jaladarshini (Lakeside hotel), Thevally

## **Cashew**

1. Kerala State Cashew Development Corporation  
- Show Room, Mundakkal

## **Hospitals**

### Allopathic

1. District Hospital
2. Victoria Hospital
3. Benzigar Hospital , Beach Road
4. Sanker's Hospital, Q.S. Road
5. Nair's Hospital, Residency Road, Ashramam
6. Upasana Hospital, Q.S. Road
7. Holy Cross Hospital, Kottiyam

### Ayurvedic

1. Kottakkal Arya Vaidya Sala, Andamukkom
2. Jayabharatham Arya Vaidya Sala, Chinnakkada

### Homeopathic

1. Amala Homeopathic Dispensary, Kadappakkad
2. Jyothi Homeo Medical Centre, Hospital Road
3. Southern Homeo Medicals, R.R. Tourist Home, Beach Road

## **Yoga Centres**

1. Kollam Yoga Kendara, Uliyankovil
2. Jawahar Balabhavan, Sastri Jn.

## **Libraries**

1. Quilon Public Library & Research Centre, YMCA Road
2. Municipal Library & Reading Room, Near Civil Station
3. Quilon Medical Library, T.B. Road

## **Book Shops**

1. Current Books, YMCA Building
2. M.S. Book Depot, Main Road, Chinnakkada
3. N.B.S. Book Stall, Paikadas Road
4. Vidyarthimithram Press & Book Depot, Municipal Buildings

## **Banks**

1. Andhra Bank, S.K.P. Building, Beach Road
2. Bank of Baroda, Parameswara Pillai Lane, Hospital Road
3. Canara Bank, Chinnakkada
4. Central Bank of India, Chinnakkada
5. Corporation Bank Ltd., Main Road, Chinnakkada
6. Dena Bank, Shine Complex, Hospital Road
7. Federal Bank, Beach Road
8. Indian Bank, Main Road, Chinnakkada
9. Indian Overseas Bank, Chinnakkada
10. State Bank of Travancore, Bishop Jerome Nagar, Hospital Road
11. State Bank of India, Chinnakkada
12. Quilon District Co-operative Bank, Chinnakkada
13. Syndicate Bank, Kadappakkada

## BARE FACTS

Area (Sq. Kms.)	:	2491
Population (in 000's)	:	2408
Percentage to State Population	:	8.27
Males (in 000's)	:	1183
Females (in 000's)	:	1225
Sex ratio : Females/1000 Males	:	1035
Density of population (per sq. km.)	:	967
Percapita income (in Rs.)	:	5201/-
No. of households (000's)	:	490
Average size of family	:	4.29

### Projected population as on 1st March

Year	:	1996	1997	1998	1999	2000
Population	:	2574	2609	2644	2680	2716
(in 000's)						

*(Population Statistics - 1991 Census)*

### Average monthly rainfall -1991 (m.m.)

Month	Jan	Feb	Mar	Apr	May	Jun	Jul	Aug	Sep	Oct	Nov	Dec	Annual
Rainfall	97	5	85	139	118	1158	485	236	16	481	207	8	3036

### Temperature (degree Celcius)

Month	:	Jan	Feb	Mar	Aprl	May	June
Max.	:	35.4	36.5	36.7	32.5	31.1	30.1
Min.	:	19.8	22.8	23.3	25.9	23.8	24.2

---

Month	:	July	Aug	Sep	Oct	Nov	Dec
Max.	:	30.8	32.9	32.6	33.1	-	-
Min.	:	23.6	23.3	23.	6 24.2	21.8	20.2

### Relative Humidity (in %)

Month	:	Jan	Feb	Mar	Aprl	May	June
Max.	:	77	72	78	71	88	92
Min.	:	44	41	41	54	75	78

---

Month :	July	Aug	Sep	Oct	Nov	Dec
Max. :	92	88	86	87	85	77
Min. :	77	76	70	74	70	55

(Source : Meterological Centre, Thiruvananthapuram.)

**Length of Coast Line** : 37 Kms.

**Tourist season** -October - March

**Main industries** - Fisheries, Cashew, Coir.

### Gross area under irrigation (cropwise) 1990-91

Crops	Paddy	Tubers	Vegetables	Coconut	Areca-nut	Cloves & Nutmeg
Area (in hecets)	300	13	218	337	5	2

---

Crops	OtherSpices & Condiments	Banana	Betal leaves	Sugar-cane	Others	Total
Area (in hecets)	20	138	54	-	602	1,689

### Live Stock Population (1997)

Cattle	Buffaloes	Goats	Sheeps	Pigs	Others
309388	11524	183556	4850	311	4941
Total Livestock			Total poultry		
514570			1445862		

**No. of Registered working factories** : 1318

**No. of SSI units as on 31.3.93** : 8825

### Distribution of PWD Roads (in Kms.) as on 1.4.93

State Highways	Major Dist. Roads	Other Dist. Roads	Village Roads	Total
167.58	398.29	1075.93	13.18	1655.61

## Schools (1992 - 93)

Section	No. of Schools	No. of students	No. of teachers
LPS	481	1,71,108	4807
UPS	212	1,49,135	5229
HS	208	1,46,316	5273
Total	901	4,66,559	15309

## Arts & Science Colleges

Govt.	1	905	29
Private	12	36,231	1290
Total	13	37,136	1319

## No. of medical institutions

	Allopathy	Ayurveda	Homeopathic
No. of Institutions	86	75	28
No. of Beds	2158	190	75

No. of Taluks	-	5
No. of Blocks	-	13
No. of Firkas	-	14
No. of Villages	-	103
No. of Panchayats	-	71
No. of Municipalities	-	3
No. of Ports	-	2
No. of Revenue Division	-	1
No. of Lok Sabha Seats	-	2
No. of Assembly Seats	-	12
No. of Grama Panchayat Seats	-	848
No. of Block Panchayat Seats	-	134
No. of Jilla Panchayat Seats	-	25

REFERENCE

- State Boundary
- District Boundary
- Taluk Boundary
- Panchayat Boundary
- Municipal & Corporation Area
- National Highway
- State Highway
- Other Roads
- Railway Line Broadgauge
- Railway Line Metregauge
- Lake & Rivers
- District HeadQuarters
- Taluk HeadQuarters

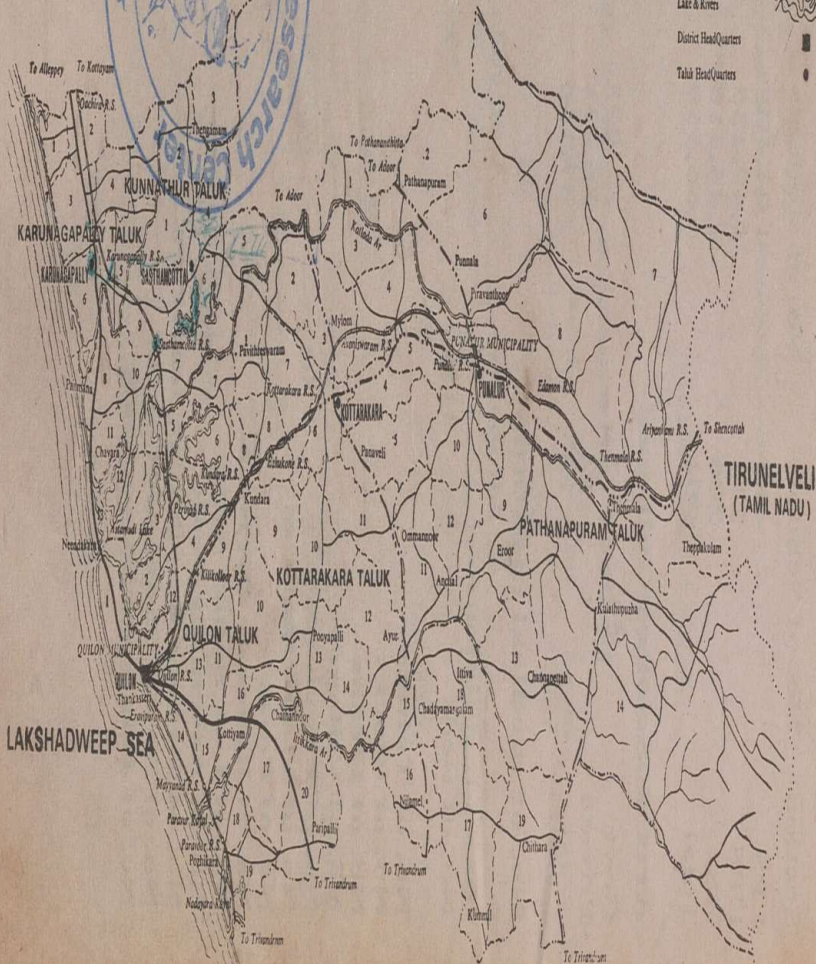
# KOLLAM DISTRICT

## SHOWING PANCHAYATS

ALLEPPEY

PATHANAMTHITTA

40



TIRUNELVELI  
(TAMIL NADU)

LAKSHADWEEP SEA

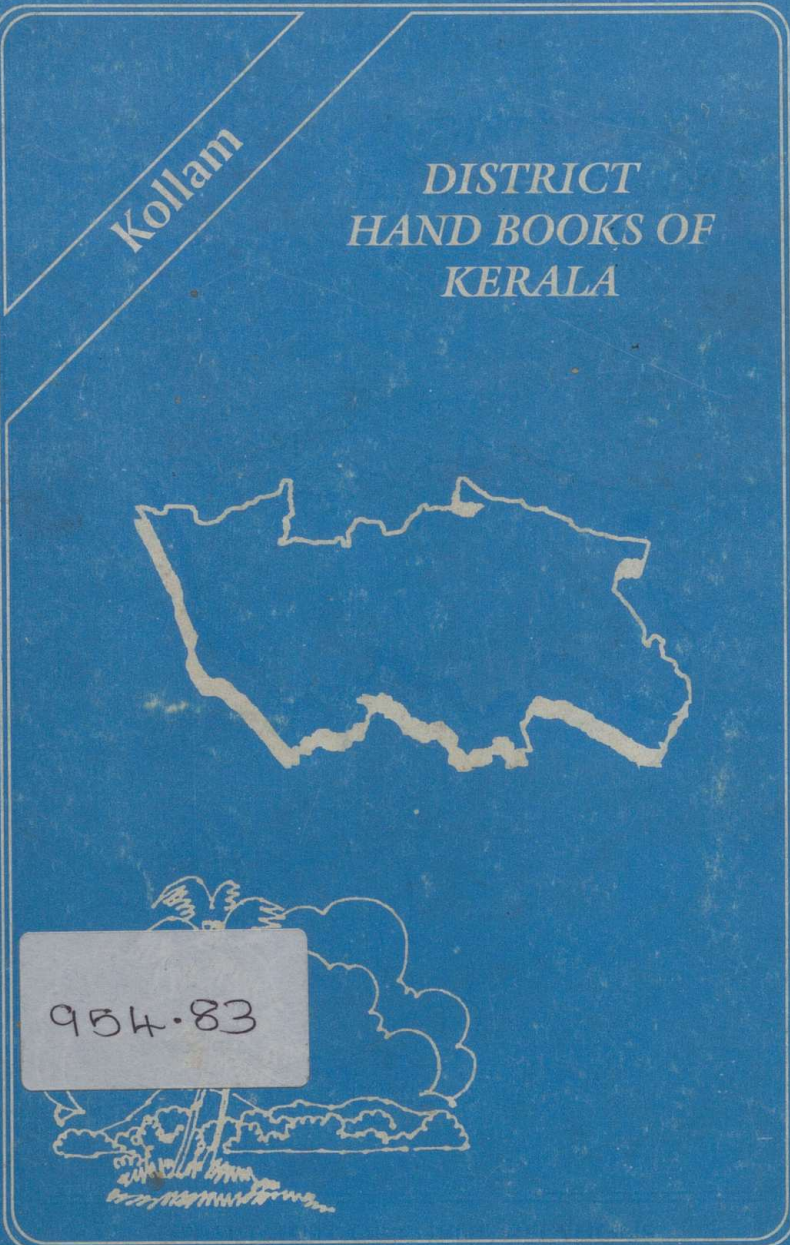
TRIVANDRUM



edited, printed and published by the director of public relations,  
govt. of kerala, printed at ksavrc press, thiruvananthapuram

Kollam

DISTRICT  
HAND BOOKS OF  
KERALA



954-83

DEPARTMENT OF PUBLIC RELATIONS  
GOVERNMENT OF KERALA

cm 0 1 2 3 4 5 6 7 8 9 10 11 12 13 14 15 16 17 18 19