

Malappuram

*DISTRICT  
HAND BOOKS OF  
KERALA*

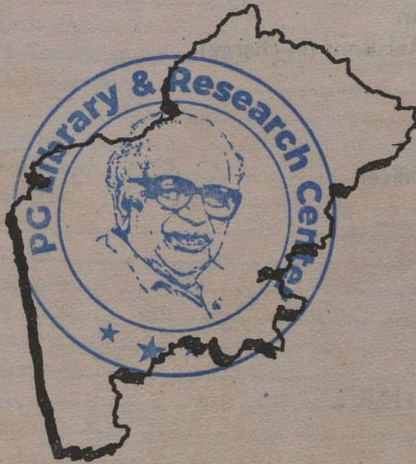


954.83 M

DEPARTMENT OF PUBLIC RELATIONS  
GOVERNMENT OF KERALA



*DISTRICT  
HAND BOOKS OF  
KERALA*



2104

**MALAPPURAM**

*District Hand Books of Kerala*

MALAPPURAM

Department of Public Relations

June 1996

Editor-in-chief

**G. Gopalakrishnan**

Director of Public Relations (in-charge)

Compiled by

E.P. Sreenivasan

Dist. Information Officer

Malappuram

Editor

S. Harikrishnan

Asst. Editor

Xavier Primus Rajan M.R.

Cover

E.S.Varghese

95A.83 M

41016

---

Published by the Director, Department of Public Relations, Government of Kerala

Copies : 8,000

**Not for Sale**

## Contents

Introduction .....	5
General Features .....	5
Topography and Climate .....	5
Rivers .....	6
Flora and Fauna .....	7
Minerals .....	8
Population .....	8
Administrative Units .....	9
Revenue Villages (Taluk-wise) .....	10
Development Blocks .....	12
Municipalities .....	12
Panchayats .....	13
Parliamentary Constituencies .....	16
Assembly Constituencies .....	16
Transport .....	18
Post and Telegraph .....	19
Mass Communication .....	19
Cultural Heritage .....	20
Art and Culture .....	22
Fairs and Festivals .....	23
Tourist Attractions .....	25
Agriculture .....	34
Animal Husbandry .....	34
Dairy Development .....	35
Fisheries .....	35
Co-operation .....	36
Industries .....	36
Rural Development .....	37
Social Welfare .....	37
Education .....	38
Health Service .....	40
Protected Water Supply .....	41
Irrigation .....	41
Watershed .....	42
Tribal Development .....	43
Scheduled Caste Development .....	43
Accommodation .....	44
Bare facts .....	45
District Map .....	47

## FOREWORD

The need for a hand book on the districts of Kerala has been felt for some time, especially with the existing ones of the Dept. getting out of print. With the advancement on the travel, tourism and communication fronts, the demand for an updated hand book on the districts, has been on the increase. It is in this context that a new series of District Hand books have been decided upon by the Department of Public Relations.

It is hoped that this book would cater to the requirements of the tourist as well as the general public, who seek a handy booklet containing basic information about Malappuram district.

Suggestions for improvement are welcome.

Thiruvananthapuram  
01-06-1996

**G. GOPALA KRISHNAN**  
DIRECTOR OF PUBLIC RELATIONS  
(in-Charge)

## INTRODUCTION

With Nilgiris in the east and the Arabian sea in the west, Malappuram district presents a treat to the eye. Rich and evergreen forests, ravines, hills and dales, rivers and brooks, sandy surfs and palm fringed coasts, festive mood of the gayful *Oonapatt* - the district preserves the cultural wealth of the good old days. It has in store, a hoary past with *Zamorins* rule, *Mamankam* festival, *Vellattiri's* revenge and the resultant *Chaver Pada* (Suicidal Squad), the British rule and indiscriminate oppression of the masses in connivance with exploiting landlords, the National and the Khilaphat movement, the Malabar rebellion and the such.

The land of great poets and writers, political and religious leaders, this district has carved a place of it's own in the history of Kerala. The Kings of Valluvanad, the *Zamorins*, the Kings of *Perumpadappu Swarupam* and the Kings of *Vettathunadu*, were the early rulers. Portuguese, Mysore sultans and the Britishers, had their sway over this place, partly or wholly. But the unique social and cultural heritage is preserved.

## GENERAL FEATURES

Amalgamating the distant and backward areas of the erstwhile Kozhikode, Perintalmanna and Ponnani taluks of Palakkad, Malappuram district was formed on the 16th of June 1969. The *Nilgiris* (blue hills) of Tamil Nadu in the east and the Arabian sea in the west, provide natural boundaries. In the north, it is bounded by Kozhikode and Wynad and in the south, by Palakkad and Thrissur districts. The district has a geographical area of 3550 Sq.Kms., which is 9.13% of the total area of the state. With regard to area, Malappuram district ranks 3rd in the state, the first and the second being Idukki and Palakkad respectively. The Ernad taluk of the district was the biggest in the state with an area of 2176.63 Sq. Kms., which is nearly as much as of Thiruvananthapuram district (2192 Sq. Kms.) and 1 1/2 fold of Alappuzha district (1414 Sq. Kms.) This taluk has been divided into 2; Ernad and Nilambur.

## TOPOGRAPHY AND CLIMATE

The location of Malappuram district is 75° to 77° east longitude and 10° to 12° north latitude, in the geographical map. Like most of the other districts of the state, Malappuram too consists of three natural divisions ; lowland, midland and highland. The low land stretches along the sea coast, the

midland in the centre and the highland region towards the east and north eastern parts. The topography of the district is highly undulating; starting from the hill tops covered with thick forests on the east along the Nilgiris, it gradually slopes down to the valleys and the small hills, before finally ending on the sandy flat of luxuriant coconut groves in the west.

The district has more or less the same climatic conditions prevalent elsewhere the state, viz. dry season from December to February, hot season from March to May, the South-West Monsoon from June to September and the North-East Monsoon from October to November. The South West Monsoon is usually very heavy and nearly 75% of the annual rains is received during this season. The climate is generally hot and humid; the range of temperature varying between 30° C and 20° C. The average annual rainfall is 2900 mm.

## RIVERS

Four important rivers of Kerala, flow through Malappuram district. They are, Chaliyar (Beypore river), Kadalundipuzha, Bharathapuzha and Tirurpuzha. Chaliyar has a length of 169 Kms. and originates from Illambaleri hills in Tamilnadu. Important tributaries of this river are Chalipuzha, Punnapuzha, Pandiyar, Karimpuzha, Cherupuzha and Vadapurampuzha. Chaliyar traverses through Nilambur, Mampad, Edavanna, Areekode, Vazhakkad and flows into the sea at Beypore in

Kozhikode district.

Kadalundipuzha is

formed by the confluence of two rivers, the Olipuzha and Veliyar. Olipuzha originates

from Cherakomban hill and Veliyar

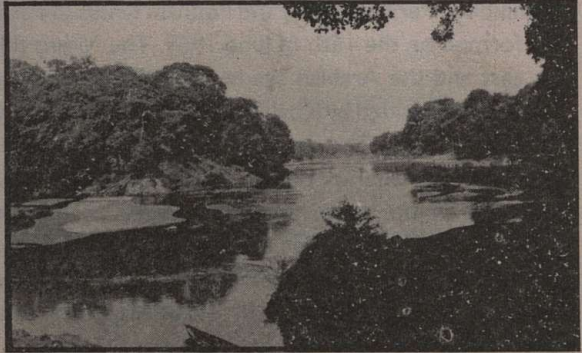
from Erattakomban hill. They flow by the wilds of

Silent Valley and traverses through

Ernad and Valluvanad regions, before flowing into the sea at Kadalundi Nagaram.

It passes through places like Melattur, Pandikkad, Malappuram, Panakkad, Parappur, Kooriyad and Tirurangadi. Kadalundi puzha has a circuitous course of

130 kms. Bharathapuzha the second longest river in Kerala, flows by the southern border of the district and drains into the sea at Ponnani. Its main



*Chaliyar river - a view*

tributary, Thoothapuzha, originates from the Silent Valley, flows through Thootha, Elamkulam, Pulamanthole and joins the main river at Pallippuram. After a course in Palakkad and Thrissur districts, the Bharathapuzha again enters Malappuram district at Tiruvegapura and from Kuttippuram onwards, the river belongs entirely to Malappuram. Tirurpuzha, 48 Kms. long, originates from Athavanad hills in Tirur Taluk, flows in a south west course upto Tirunnavaya, deviates to encircle Tirur town and flows south west, parallel to the sea, until it joins the Bharathapuzha near Ponnani port.

Of these rivers, only Chaliyar is perennial; all others get dried up in summer and hence Malappuram District is prone to draught. In Tirur and Ponnani taluks, *Kayals* (back waters) like Biyyamp, veliyancode, Manur, Kodinhi etc offer fishing and navigation facilities.

## FLORA AND FAUNA

The district has a total forest area of 1,03,417 hectares, i.e., 28.47% of total geographical area. The major forest area is concentrated in Nilambur and Wandoor blocks and Melattur in the Western ghats. Of the forests, 80% is deciduous and the rest is evergreen. Teak, Rosewood, Venteak, Choropin, Mahogoni, etc. are the important trees. Other varieties like Kulamavu and Villapine are used in the plywood industry. Bamboo is extensively grown in all parts of the forest. The district has also several man made plantations, mainly of Teak. A mammoth effort under the Nilgiri Biosphere Project is underway to protect and regenerate the natural forests. Afforestation is also being done under the Wasteland Development Programme.

Elephants, deers, tigers, blue monkeys, bears, boars, rabbits etc. are found in the forests along with a variety of birds and reptiles. Forests are the main source of raw material for a number of wood-based industrial units. Besides timber, firewood and green manure, forest produces like honey, medicinal herbs, spices etc. are collected. Minor forest produces are collected



*Nedumkayam Teak Plantation*

A mammoth effort under the Nilgiri Biosphere Project is underway to protect and regenerate the natural forests. Afforestation is also being done under the Wasteland Development Programme.

Elephants, deers, tigers, blue monkeys, bears, boars, rabbits etc. are found in the forests along with a variety of birds and reptiles. Forests are the main source of raw material for a number of wood-based industrial units. Besides timber, firewood and green manure, forest produces like honey, medicinal herbs, spices etc. are collected. Minor forest produces are collected

by the tribals. A Girijan Society functions for ensuring fair prices for collected items and for arranging supply of essential commodities to the tribal families. Bamboo for pulp factories is mainly supplied from Nilambur forests. The forests are protected by two forest divisions - Nilambur North and Nilambur South. The social forestry division promotes planting of trees outside forest lands, for protecting the natural forests.

## MINERALS

Malappuram district is not rich in mineral wealth. Laterite stone is found abundantly in the midland areas. It is exploited economically for construction work and hundreds of quarries cutting laterite stone known as *Vettukallu* are in operation, giving employment to thousands. It was Dr. Francis Buchanan, a Scottish scholar who named the porous rock *Laterite* based on the Latin term *Lateritis*, meaning brick stone. He conducted his studies in and around Angadipuram in 1800 A.D.

Deposits of limeshells are found in the coastal belt, mainly in Ponnani and Kadalundinagaram. The coastal sands of Ponnani and Velliyancode contain heavy minerals like Ilmanite and Monosite. China clay, the principal raw material for porcelain industry, is found abundantly in many parts of the district. Iron - ore, as Magnetite - Quartzite is found in Nilambur, Vaniyambalam, Kalikavu and Chembrassery. It is estimated that 1.86 million tonnes of oxidised ore and 2.52 million tonnes of unoxidised ore are available here. Karuvarakundu in the district, derived its name from iron - ore cutting and blacksmithy, which flourished in the district from very ancient times.

Nilambur region of the district, forms part of the hidden Wynad Goldfields. Placer gold: The 2 main zones for auriferous gravels are in Nilambur valley, namely Pandipuzha - Chiyarpuzha zone and Punnapuzha - Maruthapuzha zone. A possible reserve of about 8.5 million cubic metres of auriferous gravel is estimated. Economical exploitation of this deposit is being examined by the Government of India.

## POPULATION

According to the 1991 Census, the district has a population of 3096330 which is 10.66 % of the total population of the state. Of the total population 1508280 are males and 1588050 are females, forming a ratio of 1053 females for every 1000 males, the state ratio being 1039 females for 1000 males. The density of population is 872 per Sq. Kms. which is higher than the state average (747 per Sq. Kms.). The district has recorded a population growth rate of 28.87 % which is the highest in the state, the state growth rate being only

13.98 %. Malappuram ranks 3rd in area and first in population, in the state. However, the population growth rate from the decade of 1971-81 (29.43) has recorded a slight decline. Literacy as per 1991 census is put at 87.94%. Subsequently, Malappuram district was declared 100% literate along with other districts of the state; made possible by an intensive state wide literacy drive. There are 475633 residential houses and 477292 households in the district.

## ADMINISTRATIVE UNITS

Headquarters of the district administration is at Malappuram, with Collectorate and main offices in the Civil Station, established in the erstwhile headquarters of the Teritorial Army.

The district has two Revenue Divisions with headquarters at Perinthalmanna and Tirur.

There are 6 Taluks, namely Ernad (headquarters at Manjeri), Perinthalmanna, Tirur, Ponnani, Nilambur and Tirurangadi

(headquarters at Parappanangadi). The taluks of Nilambur and Tirurangadi and the Revenue Division of Tirur, were formed recently.



*Malappuram Civil Station*

The area and Population of each taluk are given below.

Taluk	Area in Sq.Km.	No. of Villages	Population
Ernad	697.26	33	626266
Nilambur	1215.37	19	458054
Perinthalmanna	505.81	24	441247
Ponnani	199.41	11	296263
Tirur	448.00	30	710430
Tirurangadi	317.18	18	525540

The taluks are divided into 13 Revenue Firkas and 135 villages.

Perinthalmanna revenue division comprises of Ernad, Perinthalmanna and Nilambur taluks and the Tirur revenue division comprises of Tirur, Tirurangadi and Ponnani Taluks.

## REVENUE VILLAGES (TALUK-WISE)

### Ponnani Taluk

1. Perumpadappu
2. Veliancode
3. Marancheri
4. Alancode
5. Nannammukku
6. Ezhuvathuruthi
7. Vattamkulam
8. Edappal
9. Thavanur
10. Kalady
11. Ponnani

### Tirur Taluk

12. Tirur
13. Trikkandiyur
14. Thalakkad
15. Vettom
16. Purathur
17. Mangalam
18. Triparangode
19. Tanur
20. Pariyapuram
21. Pomudam
22. Tanalur
23. Perumanna
24. Cheriyaundam
25. Ozhur
26. Nirmarathur
27. Kuttippuram
28. Thirunavaya
29. Ananthavoor
30. Valavannur
31. Naduvattom

32. Kattiparuthy
33. Irimbiliyam
34. Edayur
35. Kalpakanchery
36. Marakkara
37. Melmuri
38. Athavanad
39. Kurumbathur
40. Kottakkal
41. Ponmala

### Tirurangadi Taluk

42. Tirurangadi
43. Parappanangadi
44. Neduva
45. Moonniyur
46. Vallikunnu
47. Ariyallur
48. Nannambra
49. Thenhipalam
50. Vengara
51. Thennala
52. Kannamangalam
53. Peruvallur
54. Othukkungal
55. A.R. Nagar
56. Parappur
57. Ooragam
58. Pallikkal
59. Chelembra

### Ernad Taluk

60. Vazhayur
61. Cherukavu

62. Pulikkal
63. Kondotty
64. Nediyruppu
65. Manjeri
66. Narukara
67. Payyanad
68. Pandikkad
69. Vettikkattiri
70. Chembrasserri
71. Pulpetta
72. Elankur
73. Thrikkalangode
74. Karakkunnu
75. Edavanna
76. Perakamanna
77. Vazhakkad
78. Cheecode
79. Muthuvallur
80. Kuzhimanna
81. Areacode
82. Keezhuparamba
83. Kavannur
84. Urangattiri
85. Vettilappara
86. Malappuram
87. Pookkoottur
88. Morayur
89. Panakkad
90. Anakkayam
91. Pandallur
92. Melmuri

2104

#### **Nilambur Taluk**

93. Nilambur
94. Akampadam
95. Chungathara
96. Kurumbalangode
97. Edakkara
98. Vazhikkadavu

99. Amarambalam
100. Karulai
101. Mumpad
102. Wandoor
103. Porur
104. Thiruvali
105. Kalikavu
106. Chokkad
107. Vellayur
108. Karuvarakundu
109. Kerala Estate
110. Thuvur
111. Pullipadam

#### **Perinthalmanna Taluk**

112. Perinthalmanna
113. Pathaikkara
114. Aliparamba
115. Anamangadu
116. Edappatta
117. Elamkulam
118. Kizhattur
119. Nenmini
120. Melattur
121. Thazhakkode
122. Arakkuparamba
123. Vettathur
124. Kariavattom
125. Mankada
126. Angadippuram
127. Vadakkangar
128. Valambur
129. Kodur
130. Kottilanga
131. Moorkkanadu
132. Pulamanthol
133. Kuruva
134. Kuruvambalam
135. Puzhakkatti

## DEVELOPMENT BLOCKS

The district has been divided into 14 Blocks and 94 Panchayats, for the sake of development programmes.

There are also 5 Municipal Towns.

Name of Block	Area in Sq. KMs.	No. of House-holds	Population		
			Total	Male	Female
1. Nilambur Block	863.26	41010	227379	11529	11585
2. Wandoor Block	565.97	41472	249374	122364	127010
3. Kondotty Block	212.68	39173	247902	122903	124999
4. Areekode Block	273.74	30652	190057	94117	95940
5. Malappuram Block	174.30	28736	187050	91637	95413
6. Perintalmanna Block	231.79	26460	169300	82377	86923
7. Mankada Block	239.71	37693	244562	118752	125810
8. Kuttippuram Block	162.43	26043	173643	83886	89757
9. Vengara Block	123.72	28000	198473	95886	102587
10. Tirurangadi Block	142.10	36319	250749	121760	128989
11. Tanur Block	116.78	34404	248171	119801	128370
12. Tirur Block	102.69	25437	181276	86583	94693
13. Ponnani Block	99.49	21641	134031	64296	69735
14. Perumpadappu Block	90.59	20968	135087	64934	70153

## MUNICIPALITIES

Name	Area in Sq. Kms	house holds	Population		
			Total	Male	Female
1. Malappuram	33.61	8091	49692	24612	25080
2. Manjeri	53.06	11372	69334	34470	34864
3. Perintalmanna	34.41	6453	39027	18911	20116
4. Tirur	16.59	7031	49453	24414	25039
5. Ponnani	9.32	6329	51770	25048	26722
6. Anakkayam (O6)	24.53	3729	23178	11407	11771

Total Urban population as per 1991 Census is 282454 (M - 138862 F -143592) including the Anakkayam urban overgrowth.

## PANCHAYATS

	Area in Sq. KMs.	No. of occupied residential houses	No. of House- holds	Population		
				Total	Male	Female
	(1)	(2)	(3)	(4)	(5)	(6)
<b>Nilambur Block</b>						
1. Nilambur	36.25	6129	6198	34966	17128	17838
2. Amarambalam	140.15	4888	4897	26804	13065	13739
3. Chaliyar	124.28	3074	3082	16476	8073	8403
4. Chungathara	199.69	8293	8324	44569	22095	22474
5. Karulai	131.31	3158	3169	17698	8600	9098
6. Moothedam	52.24	3437	3470	19519	9558	9961
7. Vazhikkadavu	114.00	6519	6554	38108	18621	19487
8. Edakkara	65.33	5285	5316	29239	14389	14850
<b>Wandoor Block</b>						
9. Karuvarakundu	64.20	5382	5401	32812	16086	16726
10. Kalikavu	217.31	8428	8438	50620	24675	25945
11. Mambad	67.93	4292	4318	25711	12771	12940
12. Pandikkad	57.01	6531	6533	40721	20222	20499
13. Porur	34.86	3481	3484	21522	10550	10972
14. Thiruvalli	33.83	3517	3517	19937	9580	10357
15. Thuvur	31.38	3647	3654	22303	10936	11367
16. Wandoor	59.45	6108	6127	35748	17544	18204
<b>Kondotty Block</b>						
17. Cheekode	46.72	6784	6791	42125	20836	21289
18. Chelembra	15.81	4031	4035	24663	12260	12403
19. Cherukavu	16.87	4054	4087	25322	12670	12652
20. Kondotty	10.85	3247	3248	21913	10793	11120
21. Kuzhimanna	23.66	3729	3729	24017	11843	12174
22. Pallikkal	25.85	4796	4800	31715	15673	16042
23. Vazhayur	21.19	3805	3812	22948	11420	11528
24. Vazhakkad	23.78	4384	4403	26634	13174	13460
25. Pulikkal	27.95	4266	4268	28565	14234	14331

(1) (2) (3) (4) (5) (6)

### Areekode Block

26. Edavanna	49.13	5060	5073	32087	15764	16323
27. Urangattiri	76.09	5073	5088	28878	14340	14538
28. Kavanur	31.30	3895	3895	25090	12524	12566
29. Kizhuparamba	14.99	2497	2521	14637	7231	7406
30. Pulpatta	30.12	4524	4527	28970	14340	14630
31. Trikkalangode	59.90	5832	5836	36257	17837	18420
32. Areekode	12.21	3708	3712	24138	12081	12057

### Malappuram Block

33. Kottakkal	20.43	5129	5130	33909	16375	17534
34. Anakkayam	45.23	5756	5757	35740	17648	18092
35. Morayur	24.57	3844	3860	24449	11995	12454
36. Nediyruppu	20.28	3319	3322	22376	10935	11441
37. Urakam	21.56	3212	3216	21818	10683	11135
38. Ponmala	21.60	3435	3437	23505	11398	12107
39. Pookkottur	20.63	4010	4014	25253	12603	12650

### Perintalmanna Block

40. Aliparamba	35.67	4849	4858	31812	15429	16383
41. Edappatta	25.77	2720	2727	16897	8228	8669
42. Elamkulam	21.31	3334	3345	20816	9945	10871
43. Melattur	27.24	3269	3287	19990	9707	10283
44. Keezhattur	40.93	4395	4403	27362	13179	14183
45. Thazhekcode	45.03	4614	4632	30666	14939	15727
46. Vettathur	35.84	3203	3208	21757	10950	10807

### Mankada Block

47. Kuruva	35.79	4827	4842	32967	15892	17075
48. Mankada	31.33	3857	3857	23921	11658	12263
49. Makkarapambra	11.17	2171	2171	13792	6738	7054
50. Pulamanthole	32.10	4588	4597	29603	14156	15447
51. Moorkkanad	30.55	3994	4000	26960	12990	13970
52. Koottilangadi	20.92	3977	3977	26010	12878	13132
53. Puzhakkattiri	22.69	3477	3489	21982	10609	11373
54. Kodur	18.42	4096	4097	27863	13582	14281
55. Angadippuram	36.74	6621	6663	41464	20249	21215

**Kuttippuram Block**

56.	Athavanad	26.77	4325	4331	30707	14771	15936
57.	Edayoor	30.63	3586	3590	24399	11809	12590
58.	Irimbilyam	24.06	4325	4331	30707	14771	15936
59.	Marakkara	27.76	4229	4241	27845	13295	14550
60.	Kuttippuram	31.31	5642	5654	37156	18047	19109
61.	Valanchery	21.90	4574	4593	30010	14686	15324

**Vengara Block**

62.	Abdu Rahiman Nagar	14.83	4216	4220	30078	14593	15485
63.	Edarikode	15.28	3676	3681	25595	12351	13244
64.	Othukkungal	17.28	4058	4087	29037	14181	14856
65.	Parappur	15.11	3651	3655	26100	12656	13444
66.	Thennala	14.32	3067	3067	21846	10420	11426
67.	Vengara	46.90	9258	9290	65817	31685	34132

**Thirurangadi Block**

68.	Tirurangadi	17.73	6019	6030	43645	20790	22855
69.	Thenhipalam	36.23	7437	7454	48612	24109	24503
70.	Parappanangadi	22.25	7410	7489	53979	26195	27784
71.	Vallikkunnu	25.14	5604	5625	35517	17173	18344
72.	Mooniyur	22.40	5546	5552	38688	19008	19680
73.	Nannambra	18.35	4161	4169	30308	14485	15823

**Tanur Block**

74.	Cheriyamundam	11.26	3576	3580	25760	12302	13458
75.	Kalpakancheri	16.25	3954	3960	26983	12881	14102
76.	Ozhur	15.92	3689	3689	25501	12372	13129
77.	Tanalur	24.68	7519	7539	53628	25976	27652
78.	Valavannur	15.28	3828	3829	27295	13032	14263
79.	Tanur	19.49	6928	6952	54243	26535	27708
80.	Ponmundam	13.90	4843	4855	34761	16703	18058

	(1)	(2)	(3)	(4)	(5)	(6)
<b>Tanur Block</b>						
81. Purathur	24.80	5224	5240	36180	17393	18787
82. Thalakkad	16.04	3849	3853	26486	12590	13896
83. Tripangode	20.67	4701	4705	32221	15352	16869
84. Vettom	21.60	6237	6297	48522	23344	25178
85. Tirunavaya	19.58	5336	5342	37867	17904	19963

### Ponnani Block

86. Ezhuvathiruthi	14.00	4753	4779	30752	14629	16123
87. Tavanur	42.37	7726	7741	46993	22587	24406
88. Vattamkulam	20.84	4642	4652	28469	13698	14771
89. Edappal	22.28	4477	4477	27817	13382	14435

### Perumpadappu Block

90. Alamcode	20.53	4358	4358	26927	13051	13876
91. Marancheri	20.47	4387	4412	28991	13797	15194
92. Nannamukku	19.36	4164	4177	25108	12055	13053
93. Perumpadappa	15.02	4027	4039	27204	13066	14138
94. Veliyancode	15.21	3954	3982	26857	12965	13892

## PARLIAMENTARY CONSTITUENCIES

Name	Extent in terms of Assembly segments
1. Manjeri	Wandoor (SC), Nilambur, Manjeri, Malappuram Kondotty of Malappuram district and Beypore and Kunnamangalam (SC) of Kozhikode District.
2. Ponnani	Thirurangadi, Tanur, Ponnani, Kuttippuram, Mankada and Perintalmanna.

## ASSEMBLY CONSTITUENCIES

Name	Extend in terms of Panchayats
1. Wandoor (SC)	Wandoor, Porur, Pandikkad, Thuvvur, Karuvarakundu, Mampad, Edavanna, Trikkalangode and Thiruvalli Panchayats of Ernad taluk

2. Nilambur Nilambur, Chaliyar, Edakkara, Chungathara, Vazhikadavu and Karulai of Ernad Taluk.
3. Manjeri Oorangattiri, Keezhuparamba, Kuzhimanna, Cheekode, Areekode, Kavanur and Pulpetta Panchayats and Manjeri Municipality of Ernad Taluk.
4. Malappuram Malappuram Municipality and Anakkayam, Kotakkal, Ponmala, Oorakam Panchayats of Ernad Taluk and Vengara, Othukkungal Panchayats of Tirur Taluk.
5. Kondotty Pookottur, Morayur, Nediyruppu, Pallikkal Chelembra, Kondotty, Pulikkal, Cherukavu Vazhayur and Vazhakkad Panchayats of Ernad Taluk.
6. Tirurangadi A.R. Nagar, Thenhippalam, Mooniyur, Vallikkunnu, Parappanangadi and Tirurangadi Panchayats of Tirur Taluk.
7. Tanur Nannambra, Ozhur, Tanalur, Ponmundom Edrikode, Tanur Thennala and Parappur Panchayats of Tirur Taluk.
8. Tirur Tirur Municipality, Thalakkad, Vettom, Triprangod, Purathur Panchayats of Tirur taluk and Vattomkulam panchayats of Ponnani taluk.
9. Ponnani Ponnani municipality, Maranchery, Ezhuvathiruty, Nannamukku, Alankode, Perumpadappa and Veliyancode Panchayats of Tirur, Thavanur and Vattankulam Panchayats of Ponnani taluk.
10. Kuttippuram Tirunnayaya, Athavanad, Kuttippuram, valanchery, Marakkara, Kalpakanchery, Valvannur and Cheriyamundam Panchayats of Tirur Taluk.
11. Mankada Kodur, Kuruva, Koottilangadi, Makkaraparamba, Mankada, Puzhakkattiri, Pulamanthole, Panchayats of Perintalmanna Taluk and Edayur, Irimbilyam Panchayats or Tirur Taluk.
12. Perintalmanna Perintalmanna Municipality, Aliparamba, Elamkulam, Thazhekcode, Keezhattur, Melattur, Edappatta, Vettathur, Angadippuram Panchayats of Perintalmanna Taluk.

## TRANSPORT

The Calicut airport, one of the most beautifully designed airports in India, is at Karippur, 26 Kms. away from Malappuram and 28 Kms. away from Kozhikode. It has a runway of 6000 x 150 feet with night landing facilities. A huge project of extending the runway by 3000 feet, to facilitate landing of airbuses, is in progress. Regular flights to Bombay, Bangalore, Madras, Coimbatore, Madras and Sharja, are operated. Three days a week flights are operated to Dubai, Abdudhabi, Muscat and Kuwait. There are 3 flights daily to Bombay..

Two Railway lines, namely Mangalore-Madras and Nilambur-Shoranur are passing through the district. The first is through the coastal belt. Vallikkunnu, Parappanangadi, Tanur, Tirur, Tirunnavaya and Kuttippuram (from north to south) are the railway stations in this line. Tirur is an important station. Nilambur-Shoranur railway line passes through the eastern parts of the district. Only two passenger services and goods trains are operated in this section. Nilambur, vaniyambalam, Thuvur, Melattur, Pattikkad, Angadipuram and Cherukara are the railway stations.

The district has a good road network. The National Highway-17 enters at Chelembra in the north and runs through Calicut University, Kottakkal, Valanchery, Kuttippuram, Thavanur, Ponnani, Puduponnani, Veliyancode and proceeds to Trichur district in the South. Important state highways like Calicut - Nilambur - Gudalur road, Calicut - Palakkad road, Calicut - Thrissur road (NH upto Kuttippuram) pass through the district. Seventy two Kms. of National Highway, 136 Kms. of state highway and 418 Kms. of major district roads, 450 Kms. of other district roads and 800 Kms. of rural roads, provide sufficient interlinkage of places.

The district is apportioned by the Chaliyar, Kadalundipuzha, Bharathapuzha rivers and their tributaries, necessitating the construction of a number of road bridges for smooth commutation. Kuttippuram bridge, Thutha bridge and Pulamanthole bridge across Bharathapuzha, bridges at Kottakadavu, Parakkadav, Thayyilakadav, Panampuzha (Kooriyad), Koomankallu, Nooradi, Koottilangadi, Anakkayam, Melattur and Kalikavu across Kadalundi river and bridges at Areekode, Edavanna, Mampad, vadapuram, Myladi, Karimpuzha, Koorad, Kattadikadavu, Cherupuzha, Kadungallur and poonkudi across the Chaliyar river and its tributaries and bridges at Edakulam, Thalakatathur, Tirur, Unniyal and Mangattiri across Tirur river, provide for road traffic. Bridges under construction at Mavundiri kadavu (Bharathapuzha), Ettirikadavu (Tirur river) Tanur (T.K. Canal) Ther-kayam, Kundun Kadavu, Olipuram Kadavu, Kankara

Kadavu (Kadalundi river) Amarambalam (Chaliyar river) etc. will add to better transportation. A proposed bridge-cum-regulator at Chamravattom near Ponnani across Bharathapuzha, will reduce the distance from Ernakulam to Kozhikode, by 38 Kms.

Bus services are available to all centres and rural areas in the district, with nearly 1000 bus routes. K.S.R.T.C. buses also ply in main routes besides the long route buses passing through the district. There are 3 KSRTC Bus stations; at Ponnani, Malappuram and Perintalmanna.

The Motor Vehicles department gives registration to an average of 4000 light and heavy vehicles every year. There are 39290 small and heavy vehicles in the district as on 31.3.94.

## **POST AND TELEGRAPH**

There are 4 Head Post Offices, 141 Sub Post Offices, and 287 extra department branch post offices. They are managed under 2 Postal divisions, namely Manjeri and Tirur. Speed Post facility is available at Manjeri Head Post Office and at Calicut University Post Office. Malappuram district is under the telecom district of Calicut, comprising of Kozhikode, Malappuram and Wynad revenue districts. For Malappuram district, the Telecom Divisional Office is at Manjeri. sub divisional telecom Offices function at Malappuram, Perintalmanna, Nilambur, Ponnani and Tirur. There are a total of 49 telephone exchanges of which all are electronic. Fax facilities are available at all main towns.

## **MASS COMMUNICATION**

No morning newspaper is published from the district, however two evening dailies, one from Malappuram and one from Tirur are being brought out, with local circulation. They are *Al Ameen* (Malappuram) and *Prahelike*(Tirur). A few periodicals; monthlies, fortnightlies and weeklies - devoted to religion and culture are also published. A capsule cultural monthly magazine *Innu* is being published from Malappuram since 1981. All the important daily newspapers published from Kozhikode, have wide circulation in the district also.

There are 101 cinema houses, of which 24 have pucca buildings. 15 of them are in municipal towns and the rest in other towns and rural areas. Doordarshan has one relay station at Malappuram. All India Radio has started an F.M. Station at Manjeri.

## CULTURAL HERITAGE

Malappuram district has a good tradition in the field of art and culture. Many of the renowned writers and poets hail from this part of the land. It is a long chain, starting with Thunjath Ezhuthachan, honoured as the father of modern Malayalam literature. He was born in Trikkandiyur near Tirur, 400 years ago. He wrote his poems in Malayalam, when the Kerala literary field was crushed under Sanskrit, the language of the upper class. Ramayanam, and Bharatham of Ezhuthachan are widely read in Malayali houses, as sacred books.

### Melpathur

Melpathur Narayana Bhattatiri, a Sanskrit Scholar, the author of *Naryaaneeyam* lived in Ezhuthachan's period. His birth place is chandanakkavu, near Tirunnavaya. He was a great Sanskrit grammarian.

### Poonthanam

Poonthanam Namboodiri was a great poet of the 16th Century. He wrote devotional poems aiming at social reforms. He exhorted the people to have moral and secular values in a period when *Chaturvarnya* was in its top status. His birth place is Keezhattur, near Perintalmanna.

### Achutha Pisharodi

Trikkandiyur Achutha Pisharodi, an authority in Astronomy, Sanskrit grammar and Ayurveda, lived in the period of Thunjath Ezhuthachan. He was the Guru of Melpathur Bhattathiri.

### Vallathol

Vallathol Narayanan Menon, the great modern Malayalam Poet, who was instrumental in reviving Kathakali, hailed from Chennara, near Tirur. Vallathol later settled in Cheruthuruthi in Thrissoor district.

### Kuttikrishna Marar

A great literary critic, writer and grammarian in Malayalam, Kuttikrishana Marar was a native of ponnani.

### Moyin kutty Vaidyar

The finest exponent of Mappila Pattu, Moyin Kutty Vaidyar (1851-91) was born in Ottupara, near Kondotty. His Badr-ul-Muneer-Husn-ul-Jamal, the earliest romantic piece in Mappilappattu, is praised for its craft.

### **V.C. Balakrishna Panicker**

Poet and writer, V.C. Balakrishna Panicker (1889-1912) was born at Oorakam in Vengara. His poem *Oru Vilapam* is famous.

### **Edasseri**

Edasseri Govindan Nair, poet and Social reformer, was a native of Mallur near Kuttippuram, who settled in Ponnani. He was prominent among progressive writers of Kerala.

### **Uroob**

P.C. Kuttikrishnan, known as Uroob, was from Kadavanadu in Ponnani. His novels and short stories played a great role in the development of Malayalam literature.

### **Cherukat**

Cherukatu Govinda Pisharodi, known as Cherukad was a great playwright and novelist, associated with the Communist movement. His birth place is at Chelakkara, near Perintalmanna.

### **K. Damodaran**

The Communist theoretician and author of the famous play *Pattabakki*, which helped the growth of the agrarian movement in Kerala, was born in Tirur.

### **Kuttipurath Kesavan Nair**

This poet was from Kutipuram. The Agrarian beauty and the innocence of country sides, were his themes.

### **P.V.Krishna Warriar**

*Kavikulaguru* P.V. Krishna Warriar, was born in Kottakal.

### **Vachaspathi**

Famous for the interpretation of *Amarakosam* named *Parameswari* Vachaspathi Parameswaran Moosad, was a native of Ponmala near Malappuram.

### **Vazhemkada**

Famous Kathakali actor and Guru, Vazhemkada Kunju Nair, was from Malappuram District.

### **Pulikkottil Hyder**

Writing mappila songs in lucid and simple style and in colloquial

Malayalam of Ernad, Pulikkottil Hyder attacked social evils. He was born in Wandoor.

### **Chakkiri**

Chakkiri Moideen kutty, Mapilla poet and writer, born in Cherur near Vengara, used simple Malayalam. He composed an Arabi-Malayalam dictionary.

### **Nandanar**

Nandanar (P.C. Gopalan) born in Angadipuram, is famous for his stories based on military life.

### **Sudhakaran**

Sudhakaran Thelakkad was a promising poet of the district. Born in Elamkulam he died in his 27th year.

### **Madhavanar:**

The translator of Gandhiji's autobiography into Malayalam, Madhavanar (K. Madhavan Nair) was born in Pallikkunnu.

The founder of *Drig Ganitha* in astronomy, Vadasseri Parameswaran Namboodiri of Thirunnavaya, the writer of interpretation for the Arya Bateeyam, Neelakandha Somayaji of Trikkandiyur, Poets and writers like K.C. Komu kutty Moulavi, M. Govindan, Vallathol Gopala Menon, Kuttipurath Kittunni Nair, Kadavanad Kuttikrishnan.....; the list is lengthy.

## **ART AND CULTURE**

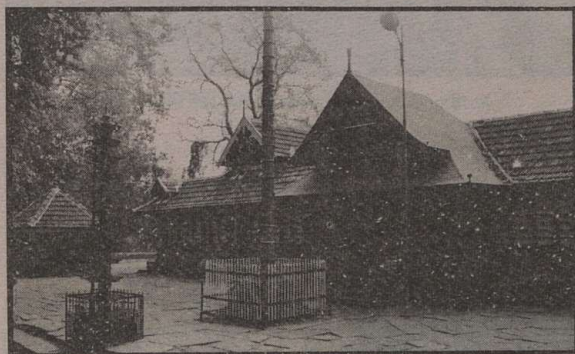
The revival of the Malayalam stage was initiated by the late P.S. Varier, the founder of Arya Vaidya Sala. It was under his patronage that the *Parama Siva Vilasam Dramatic Company* was started in Kottakkal to promote Malayalam drama, at a time when only Tamil drama clubs had their sway. A permanent hall to stage Malayalam dramas, was built at Kottakkal. Later, this dramatic club was renamed as *P.S.V. Natysangham* where Kathakali is the main programme now. A Kathakali School is also run by the Natysanghom.

Of the popular theatre, K. Damodaran's *Pattabakki* and Cherukad's *Nammal Onnu* played an important role.

*Kolkali*, *Daff Muttu* and *Aravana Muttu* of Muslim community are important folk art forms of the district. *Chavittukali* or *Cherumakkali* is another

ancient folk art of Malappuram. The living exponent of *Sopana Sangetha*, Nheralath Rama Poduval, hails from Angadipuram.

The district has a good network of libraries. The Kerala Grandhasala Sanghom is very active here. Under the Library Council, there are 332 affiliated libraries, 140 in Ernad, 86 in Tirur, 66 in Perintalmanna and 40 in Ponnani taluks. Under the district Library Council, 4 taluk Library Unions are functioning.



*Thirumandham kunnu Temple*

## **FAIRS AND FESTIVALS**

With a number of Temples, Mosques & Churches, Malappuram abounds in fairs & festivals. Some important ones are given below.

### **Thirumandham-kunnu Pooram**

Thirumandhamkunnu

Pooram is an important temple festival of central Malabar. Thirumandhamkunnu temple is said to be one among the three important Bhagavati temples of Kerala, the others being Kodungallur and Panayanarkavu. The Pooram festival is during March-April. The cultural feast is the most attractive feature of this festival. The seven day daily pooja attracts thousands of devotees. The famous Mangalya Pooja attracts young women in thousands, who come to pray for a good wedlock. Thirumandhamkunnu is 2 kms. west of Perintalmanna, in the Kozhikode - Plakkad state high way.

### **Kottakkal Pooram**

Kottakkal, the seat of Ayurvedic treatment, is also famous for its temple festival. Kottakkal pooram, celebrated during March - April, is attractive for its cultural festivity. During the seven days, famous classical artistes of the country perform here.

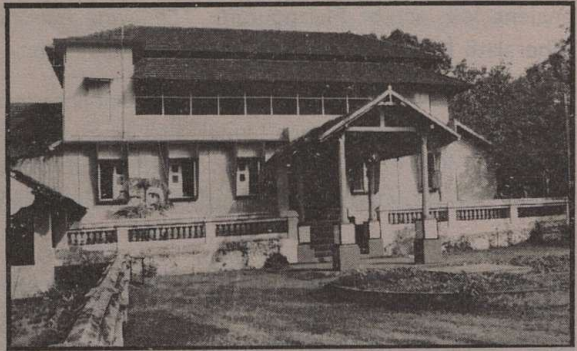
### **Nilambur Pattu**

Nilambur Pattu is an ancient festival. It is conducted by Nilambur Kovilakam during February. Thousands gather to witness this week long

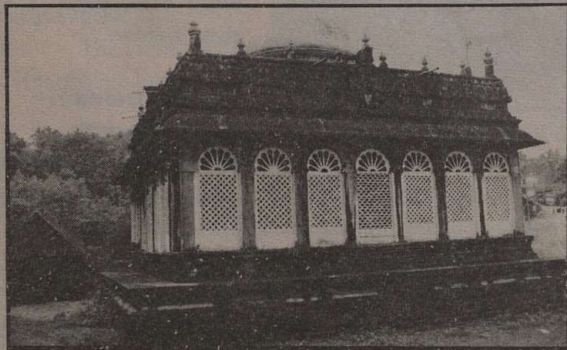
celebration. The festival is related to ancient war and hunting. Tribal chieftains have important roles in the rituals

### **Kondotty Nercha**

Kondotty Nercha is a week long festival in March. The Nercha is conducted in Pazhayangadi Mosque of Kondotty, constructed in the 18th century A.D.. The Tomb of Mohammed



*Nilambur Kovilakam, the palace of the erstwhile Nilambur Rajas*



*Pazhayangadi Mosque at Kondotty*

Sha the Sufi exponent, is close to the mosque. It was constructed in Mughal style. The Nercha has an inter religious expression in its *Petty Varavu*. Thousands gather during the Nercha which assumes carnival proportions with hectic trade and amusements.

### **Puthenpalli Nercha**

The *Andu Nercha* of Puthenpalli at Perumpadappu in the south west border of the district, is also famous. Lakhs of devotees attend this annual festival of the mosque. As a part of the festival, *neichor* (Ghee Rice) is distributed to devotees and the poor.

### **Omanur Nercha**

*Omanur Nercha* is a famous mosque festival in Malappuram district, celebrated in memory of martyrs. Omanur is 6 Km away from Kondotty.

## Malaparamba Perunnal

The church festival at Malaparamba near Angadipuram is famous. Church festivals in Pariyapuram, Chungathara, and Edakkara in summer, also attracts plenty of devotees. Small and big religious festivals are conducted in almost all parts of the district during summer. *Bakrid*, *Id-ul-suha* and *Muharam* of Muslims *Thiruvathira* and *Navarathri* of Hindus and *Christmas* of Christians, along with *Onam*, common to all sects, are celebrated. An intermingling fragrance of *Oppanappattu*, *Duff*, *Kaikottikali*, and *Margamkali*; prevails all over the district. During *Onam*, a Tourism Festival for one week, with a variety of cultural programmes, is also organised.

## TOURIST ATTRACTIONS

Malappuram district, with its rich natural beauty and historic past, has its own tourist attractions.

### Nilambur

Nilambur is famous for its teak plantations. The oldest teak plantation of the world, the *Conolly's Plot* is just 2 Kms. from Nilambur town. The plot was



*Kanni Mari; - the oldest teak tree in the world*

named in memory of H.V. Conolly, the then Malabar District Collector, who was instrumental in raising the teak plantation in the entire Nilambur area. Sir Chathu Menon, a forest Officer under Conolly, organised the hectic task of planting Teak. Chathu Menon was laid to rest in the Teak garden in Conolly's Plot. The oldest Teak *Kannimari* in the plot, is a rare attraction. This plot of 2.31 Hectares, is beside the *Chaliyar* river at Aruvakode, where a country boat ferry is ready for visitors.

### Teak Museum

Four Kms. away from Nilambur, on the side of Nilambur-Gudallur road, is world's first Teak Museum and a sub centre of Kerala Forest Research Institute. In the Teak Museum, a visitor can have at hand, information on all aspects of teak. The

museum, arranged in a two storied building, exhibits articles and details of historic, aesthetic and scientific value.

Eighteen Kms. away from Nilambur, is Nedumkayam where the rain forests flourish. From the wooden rest house built by the Britishers, elephants and deer can be viewed. An elephant taming centre is also there. Half an hour jeep journey through the thick forests from Nedumkayam, leads to Mancheeri, the settlement of *Chola Naikas*, a primitive tribe.

Beyond Chaliyar river, 27 Km from Nilambur, is Valamthode, a hill top place where a perennial waterfall attracts people. This too is a tribal settlement. Road accessibility is through Kozhikode district by Areekode-Mukkam Road.

Nilambur town is famous for Kovilakams where the Rajas resided and ruled the land. The Kovilakams have beautiful frescoes and artworks in wood. The forest division offices (Nilambur North & Nilambur South) are functioning from here. It is the terminus of Shoranur- Nilambur railway and it is 40Kms. from Malappuram town.

### **Manjeri**

Twelve Kms. north east of Malappuram town, Manjeri is the head quarters of Ernad Taluk. It was a live centre of the National Movement. Manjeri Kovilakam was the seat of the ruling families under the Zamorins. The District Hospital and the District Court are at Manjeri. Some district offices like the District Medical Office, PWD Roads Division, Local Works division etc. are also functioning in this town. Anakkayam 2 Kms. from Manjeri was an important center in the 1921 mass upsurge. Anti British revolts took place from 1790 itself, in and around Manjeri.

### **Malappuram**

Malappuram is the head quarters of the district. It is 26 Kms. south-east from Calicut Airport and 28 Kms. north east from Tirur railway station. It was a military head quarters from ancient times. The zamorins of Kozhikode had their sway over this place and they stationed a part of their militia here. *Para Nambi* the Chieftain of the Zamorin, ruled with his head quarters at Kottappady in Malappuram. Malappuram Nercha, celebrated in summer, is in memory of martyrs who fought the atrocities of the militia. The Britishers established the Haig Baracks on top of a hill, at the banks of Kadalundi river, to station their forces. Main baracks has now been turned into the seat of district administration. Main district offices are functioning here. Malappuram is the headquarters of the Malabar Special Police, established in 1921. Pookottur near Malappuram, has a place in history, where the Mopla warriors fought the British with their

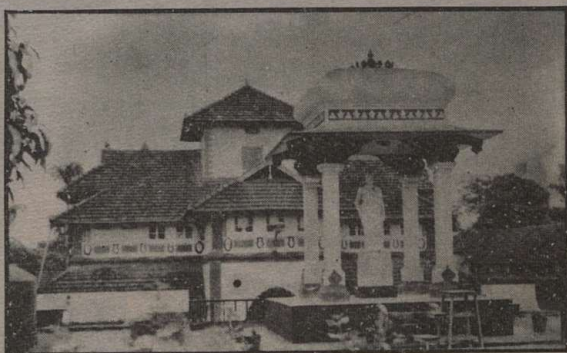


*Malappuram Mosque - The martyres who faught Para Nambi, were laid to rest near here.*

traditional weapons and were killed in cold blood, during the Malabar Rebellion. Panakkad, 6 Km from Malappuram in Malappuram - Parappanangadi road, is an important spiritual centre for the Muslims of Kerala . 10 Km away from Malappuram, between Anakkayam and Mankada, is Poonkudi Mana, famous for the traditional method of treatment of mental illness. Seminars on modern treatment and traditional styles are conducted here. Poonkudi Thalapoli is a Hindu religious festival of this mana.

### **Kottakkal Arya Vaidya Sala**

Kottakkal is a world renowned centre of Ayurveda. The Arya Vaidya Sala, established by P.S. Warriar, the well known physician and social reformer, is here. People from different parts of the world come for treatment. Art and culture also flourish in Kottakkal at the patronage of Arya Vaidya Sala. P.S.V. Natyasanghom has a unique place in Kathakali. A Kathakali School is run by the sanghom. Venkata Theva temple near the Arya Vaidya Sala, is noted for Mural paintings. Kottakal Pooram festival attracts



*Kottakkal Arya Vaidya Sala; - world renowned Ayurvedic research, treatment and study centre*

thousands. Connoisseurs of music, art, culture and literature of the country, participate in the cultural mela organised in connection with the pooram.

Annual Seminar on Ayurveda and other branches of medicine, conducted as a part of founder's day of Arya Vaidya Sala, are attended by experts from abroad also. A medicinal herbal garden, maintained by the Vaidyasala is a rare treasure.

There is an Ayurveda College at Kottakkal. The Govt. of Kerala runs the only Ayurveda Mental Hospital of the state, here. Kottakkal is 12 Kms. west of Malappuram. National Highway-17 passes through Kottakkal. The distance from here to Calicut Airport is 13 Kms., and to Tirur Railway station is 16 Kms. The Famous Kadampuzha Devi Temple is 10 Kms. from Kottakkal, where devotees in and out of Kerala, come and pray to remove obstructions in life. Dry coconut is the main offering.

### Thirunnavaya

The land of ancient *Mamankam*, Thirunnavaya is 7 Kms. south of Tirur. Situated on the banks of Bharathapuzha, it is a place of historical importance. In olden days, Mamankam was a grand assembly of the rulers. held once in 12 years, in which, one among them was selected as the emperor of Kerala. It was an

enormous trade fair also. The mamankam festival was celebrated for 28 days with great pomp and pageantry where traders from outside came in ships and barges to Thirunnavaya through Ponnani port. Thus the economical importance of Mamankam was high and hence the right to conduct and control it



*Chamravattom Sastha Temple on the banks of the Bharathapuzha*

was important. At the end of the rule of Perumals, the right of Mamankam was with Vellattiri, the ruler of Valluvanad. Later the Zamorin of Kozhikode, took this right by force and this resulted in dispute and bloodshed between these two Rajas. Valluvand Raja used to sent *Chaver* warriors to fight until death, to recapture the right from the Zamorin, who would stand *Nilapadu* at Nilapadu

thara in Thirunnavaya, surrounded by a large contingent of soliders, in every 12th year. The last of such mamankam, was believed to be held in 1755, when Zamorin had an hair-breath escape from a 16 year old Chaver. The *Nilapaduthara*, now in the premises of Kodakkal Tile factory, is protected by the Archaeological department. A deep well called *Manikkinar*, believed to be dumped with bodies of the Chavers, is also protected. Thirunnavaya is a converging place of the Trimurtis, (3 Gods - *Brahma, Vishnu, Siva*) causing birth, life, and death in Hindu belief. Three temples, consecrated to these dieties, are on either bank of Bharathapuzha. The famous vedic Vidyalya *Othanmar Madom* of ancient times, is on the left bank of Bharathapuzha, near the Siva Temple. This madom was a centre of Aryanisation through Sanskrit and Vedic education, as Thirunnavaya was believed to be the main centre, where Parasurama brought and settled Brahmins. The Palace (Mana) of Puranic fame *Azhuvanchery Thamprakkal* is 2 Kms. north of Thirunnavaya. Navamunkunda Temple, believed to be constructed by Nava yogis on the right bank of Bharathapuzha, is an important Vishnu temple of Kerala. *Pitru Tharpanam* is a ritual, held here on the day of *Amavasi* of Karkidaka (July). *Balikarma* is offered by people in their wet clothes, after a dip in the river, for the salvation of sins and to appease the dead souls.

A martial art festival of Kalaripayattu, is conducted during summer on the sands of dry Bharathapuzha. The famous Changampalli Kalari, is near Thirunnavaya. During the Second week of February, a Sarvodaya Mela is conducted in Thirunnavaya where the Gandhians of Kerala, use to assemble. The *Santikudeeram* established by the national leader K. Kelappan, is the centre place of this mela.



*Thunchan Memorium at Tirur;- where hundreds throng on Vijayadasami day to initiate their children into learning*

## Tirur

Tirur is one of the important business centres of Malappuram district. It is 41 Kms. south of Kozhikode, on the Mangalore-Madras railway line. Thunjan Paramba in Trikkandiyur, 3 Km from Tirur railway Station, is sacred for all who speak Malayalam. This is the birth place of Thunjuath Ramanujan Ezhuthachan of the 16 century AD, honoured as the *Father of*

*Malayalam literature.* Important works of Ezhuthachan, *Adhyatma Ramayanam* and *Adhyatma Bharatham* are widely recited in Kerala homes. A memorium for the great poet has been built at Thunjan paramba, where week long literary mela is organised in the last week of December. People in hundreds, reach Thunjanparamba with their children, to initiate them into the world of letters on the *vijayadasami* day. Children are made to write on the white sands of Thunjanparamba with their fingers. Young poets of Kerala come on that day to offer their first poem. a *Nuxvomica* tree, of which leaves are not bitter, is a surprise at the Thunjan paramba. 12 Kms. south of Tirur is Chamravattom sasta Temple, which is constructed on the Bharathapuzha. Six Kms. from Tirur, is Truprangode where the only temple of Kerala, consecrated to Garuda, the bird diety, is situated. Chandanakavu, the birth place of the great sanskrit poet and grammarain, Melpathur Narayana Bhattathiri of 16th Century, is 10 Kms. away from Tirur in Thirunnavaya - Kottakal road. A memorium has been built there for the poet, where small children are brought for their formal initiation into learning, on Vijayadasami day, as in Thunjan paramba. Tirur - Koottayi road ends at Padinharakara, where the Bharathapuzha and Tirur puzha converge to drain into the sea. This place is noted for migratory birds, gathering in thousands, during February - April.

Tirur was to witness the ill-famed Wagon tragedy of the 1921 rebellion. Seventy prisoners sent to Pothannur, filled up in an airtight goods wagon from Tirur railway station, died of asphyxiation. 4 of them were Hindus. The wagons were returned with the dead bodies to Tirur. These bodies were laid to rest in Khabaristan of the mosque nearby. Tirur Municipality has built a town hall in memory of the Wagon Tragedy.

### **Perintalmanna**

Twenty Kms. south-east of Malappuram, this town is the head quarters of Perintalmanna Taluk. Thirumandhamkunnu temple and Tali temple in Angadipuram, 2 Kms. from Perintalmanna, are important pilgrim centres. Tirurkad, a place 6 Kms. away from Perintalmanna, in Kozhikode road, is famous for its Muslim educational complex and yathimkhanna. The Mankada Kovilakam, 8 Km away in Manjeri road, was the seat of the ruling family, under old Valluvanad Kingdom. A Chaverthara, preserved near the Thirumandham kunnu temple, is a memorium for the martyrs of Mamankam. The Chaver warriors used to converge at this place before moving to Thirunnavaya.

Eight Kms. from Perintalmanna is Keezhattur, the birth place of great poet of Malayalam, Poonthanam Namboodiri of 16th century AD. The house of the poet is preserved as a monument by the Guruvayur Devaswom. Pariyapuram Church and Malaparamba Church are important Christian Centres. A fort of Tipu Sultan, is at Paloor near Angadipuram.

In the Angadipuram Rest House premises, a monument of Francis Hamilton Buchnan's finding of laterite stone is built by the Geological survey of India.

### **Kondotty**

The growing town of Kondotty near the Calicut airport, is famous for the *Nercha* in the Pazhayangadi Mosque. It is the birth place of the great Mappila Poet, Moyiain kutty Vaidyar. He popularised Mappilapatt by his poems on non-religious and romantic themes. A memorium for the poet is proposed to be built in Kondotty. The history of Kondotty is connected with that of Kondotty Thangals; the Sufi exponents. The first Thangal - Mohammed Shah - was brought by Tipu of Mysore, to bring the mappilas to the side of his rule. The Thangal first resided at Areekode and later settled in Kondotty. When the British emerged on the scene putting an end to the reign of Tipu sultan, the thangal switched sides with them. Hence, during the 1921 upsurge, the mappila mob attacked the house of the Seventh thangal, Naziruddin Shah. Kondotty Nercha is held at the tomb of the first Thangal.

Two Kms. from Kondotty, is Nediyruppu from where the Zamorin Kingdom was expanded. In ancient times, Zamorins were known as Nediyruppu Swaroopams.

### **Tirurangadi**

Tirurangadi was an important centre of the Khilaphat movement, the National movement and the Malabar Rebellion. It was the Tirurangadi incident on 20th August 1921, that ignited the outbreak of the *Mapila Rebellion*. Mampuram Kizhakkepalli was the seat of Khilaphet leader, Ali Musiliar and a centre of religious education.

The Mampuram mosque on the other side of the Kadalundi river is a pilgrim centre. At Mampuram Nercha, People from all religions come and offer agarbathis (incence sticks) for the fulfilment of their aspirations. Tirurangadi, 24

Kms. west of Malappuram, is now the Block headquarters. A new Taluk is proposed to be formed with its head quarters at Tirurangadi. There is the P.S.M.O. College and a big Yatimkhana (Muslim Orphanage) here.

Eight Kms. west of Tirurangadi, is Parappanangadi, which is an important fishing centre. A Fisheries Development Project is functioning here. A fish seed centre also functions at Ullanam, near Parappanangadi.

### **Kadalundi Nagaram**

Kadalundi Nagaram is situated in the north western border of Malappuram district, where the Kadalundi river flows into the Arabian Sea. It is 10 Km north of Parappanangadi. The nearest railway station is at Vallikkunnu. Kadalundi Nagaram is an abode of migratory birds, which flock in on the vast stretch of water during February-April. Pooram festival in the Niramkaitha Kotta Bhagavati temple near Vallikkunnu, lasts for a week, attracting thousands.

### **Tanur**

The coastal town Tanur, was one of the earliest Portugese settlements. It is believed that St. Francis Xavier visited this place in 1546. situated 8 Km from Tirur, it is an important fishing centre. Mangalore-Madras railway line passes through this town. The Keraladheeswarapuram temple dedicated to Lord Vishnu, which is one among the oldest temples of Kerala, is 3 Km South of Tanur town. Keraladheeswarapuram is also a weavers settlement.

### **Ponnani**

Ponnani is the only port in Malappuram district and one of the oldest ones in Kerala. A tidal port at the mouth of Bharathapuzha, Ponnani is an important fishing centre. Ponnani is connected by road from Kuttippuram railway station. National Highway 17 passes through this town, which is divided by the Canolly Canal, adding to its beauty.

Ponnani is a town of mosques and Khabaristans. Though described as a place of 23  $\frac{1}{2}$  mosques, there are nearly 50 mosques. Malik Ibnu Dinar, the first Islamic missionary who came to Kerala, was believed to have visited Ponnani. The Huma Ath mosque, the biggest mosque in the town, was built by Sheikh Zainuddin Makhdoom in the 16th Century. Zainuddin was proficient in Arabic and he wrote books. Zainuddin Makhdoom II was another scholar who

wrote the early history of Kerala Muslims. The religions established by the Makhdom I, is renowned all over the country.

Trikavu in Ponnani was one among the seats of the Zamorin, from where he controlled the trade and commerce. The famous Trikavu Durga temple here, celebrates Navarathri festival.

Ten Kms. south east of Ponnani, is the legendary Mookkuthala Bhagavathi Temple, one of the ancient Durga temples of Kerala. It is believed that Sankaracharya is associated with the founding of the temple. The Karthika Mahotsav, celebrated in Vrishchikam (November-December) attract thousands of devotees. The Mookuthala stone, believed to be growing from below the idol every day, is considered sacred. Sukapuram temple near Edappal, is another important Hindu temple.

Biyam Kayal is a spread of backwaters near Ponnani town, where a boat race is conducted annually, during Onam celebrations. A permanent pavilion is built for the spectators and nearly a dozen country boats, including some rowed by women, participate. A big scheme is underway to develop a tourist complex here, with hotel, park and pedal boats.

### **Perumpadappa**

Boarding Thrissur district, Perumpadappa was the seat of Cochin princes known as Perumpadappa Swarupam. It is now the headquarters of Perumpadappa Block. Puthenpalli mosque and jaram attract devotees. Perumpadappa is about 15 Kms. from Ponnani.

Veliyancode near Perumpadappa in the coastal line, is an important Islamic centre from ancient times. The religious leader Umar Quasi (1757-1852) was also a social reformer. He instigated tax denial, a movement when land tax was inordinately increased by the land lords with government backing. He was arrested by the Kozhikode Collector and imprisoned. Another Social reformer was the successor of the Qasi, Sayed Makti Thangal, who preached for secular education of muslims, for progress in life.

### **AGRICULTURE**

Agriculture is the mainstay of the population, involving 75 % of the people, directly or indirectly. The main crops raised are paddy, coconut, tapioca, arecanut, cashewnut, banana, rubber, pulses, ginger and pepper.

Here, 2.08 lakh hectares of land are available for agriculture. The vast majority of the peasants are small land holders. 2.36 lakh hectares are holdings below one hectare. Only 16,107 hectares of holdings are above 2 hectares in area.

Paddy has lost predominance among crops during the last decade. Now coconut tops, with a total area of one lakh hectares. The annual coconut production stands at 470 million nuts. Paddy is cultivated in 50,908 hectares with an annual production of 1.26 lakh metric tonnes. Cashew is raised in a total area of 19,299 hectares. About 12,000 metric tonnes of raw cashew nuts are produced annually. Rubber, a fast expanding cash crop in the district, has got a coverage of 17,900 hectares. Malappuram has outrun Kottayam, the rubber district of Kerala, in the total area under rubber cultivation, though the annual production is below 1,800 MT. An important cash crop is arecanut. It covers an area 11,398 hectares, with an average annual production of 2,300 M T Tapioca is cultivated in 12,994 hectares with annual production of 2.41 Lakhs MT. Banana (11,398 H) Vegetables (3000 H) Pulses (1,800 H) Sweet Potato (1,060 H) Oil Seeds (2,869 H) Hill produces (1,720 H) etc. show the crop diversity. For research and extension services in agriculture, technology and to produce and provide planting materials to the farmers, a net work of institutions function in the district. The Seed Garden Complex at Munderi, 27 Kms. from Nilambur, is said to be the biggest farm in entire Asia. The District Agricultural farm in Chungathara, state farms at Thavanur, Anakkayam and Chokkad Coconut Nursery and anti parasite breeding station at Parappanangadi are also functioning. A Cashew Research and Development Centre at Anakkayam and an Agriculture Technology College at Thavanur are functioning under the Kerala Agricultural University. At Malappuram, there is a soil testing laboratory. One Principal Agriculture Officer, 14 Block Level Asst. Directors and 99 Panchayat level Agriculture officers are there .

## **ANIMAL HUSBANDRY**

According to the 1987 Live Stock Census, there were 23,000 cattle, 50,000 buffaloes, 1,75,000 goats 19,9000 chicken, 1,65,00 ducks, 4,000 rabbits and 500 pigs in the district.

Four Veterinary poly clinics 7 Vet. hospitals 37 dispensaries, 8 Sub centres, 56 cattle development centres, 2 mobile farm aid clinics, one clinical laboratory, one poultry farm, One mobile diagnostic laboratory, one regional

artificial insemination centre, One Rinder Pest check post etc. functions for the service of farmers and welfare of animals. A project to preserve the Malabari Goats, having high disease resistance, is also undertaken.

## DAIRY DEVELOPMENT

Eleven Block level extension officers and dairy farm instructors, work in the district office. There are 135 Co-op milk societies. They collect and distribute about 48 lakh litres of milk annually. There is one quality control unit at the district level. Dairy development department provides assistance to the societies for buildings, furniture, and equipments. Farmers are given assistance to purchase milch animals and to construct standard cattlesheds. Fodder grass cultivation is promoted with subsidy. There is one milk chilling plant is at Nilambur under MILMA.

## FISHERIES

The district has 70 Kms. of sea coast. It stretches from Kadalundi Nagaram in the north to Palappetty in the south. The Coastal belt is in Vallikkunnu, Parappanangadi, Tanur, Tanalur, Vettom, Purathur, Veliyancode, Perumpadappu Panchayats and Ponnani Municipality. Main fishing Centres are Ponnani, Koottayi, Parappanangadi and Tanur. High sea fish catching operations with mechanised boats are centred in Ponnani and Parappanangadi. Ponnani is a major fisheries port with about 350 mechanised boats. There are Fisheries guide lights, at Ponnani and Tanur to help night fishing.



*Ponnani fish landing harbour - a view*

Fishermen welfare programmes are undertaken by fisheries department and Matsyafed. The Deputy Director of Fisheries at Ponani and the District Officer of Matsyafed is at Tirur. There are schemes to provide fishing equipments, houses, latrines and other amenities to fishermen. There are

educational assistances, insurance schemes, financial assistance during off season, etc. for the benefit of fishermen. A Fish Farmer Development Agency (FFDA) to promote inland fishing is also functioning.

## CO-OPERATIVES

The district has a good network of co-operative societies. All types of Co-operative activities ranging from ration shops to hospitals are undertaken under co-operatives. One District Co-operative Bank, 6 Urban Banks, 4 Agricultural Development Banks, 115 Primary Co-operative Banks, 12 Housing Development Societies, 30 Employees Societies, 50 SC/ST Co-operatives, 2 Women's Co-operatives, 290 College/School Societies, 11 Marketing Societies, 50 Industrial Societies, 76 Khadi-Village Industries Societies, 18 Coir Societies, 13 Fishermen Societies, 9 Handloom societies and 37 Milk Distribution Societies, function here. The Dist. Co-op Bank has 32 branches in various areas.

## INDUSTRIES

As on 31-3-95, there are 5,918 small industrial units with permanent registration. Out of them 2,040 units are agro-based. These units have a total investment of about Rs. 92 crores and they provide employment directly to 33,500 people. Average investment per unit is Rs 1.55 lakhs. There are about 500 women's industrial units and 230 scheduled caste ventures. About Rs. 1 crore is spent annually for various industrial promotion schemes like investment subsidy, interest subsidy, self-employment assistance, etc. in the district. There are 16 large and medium industries in the district which provide direct employment to 4,500 people. These units have a total capital investment of Rs. 42 crores. Among the big undertakings, 3 are spinning mills. There are 2 wood-based, 6 chemical and 5 engineering units. A co-operative Spinning mill (25,000 Spindles) and a unit of KELL near Kuttippuram are worth mentioning among the several proposed large scale industrial units. Preliminary steps for establishing an Industrial Growth Centre in 250 acres near Panakkad, has been completed. An Electronics Techno Park is coming up near Calicut University. A rubber based common facility centre and industrial estate established at Payyanad at a cost of Rs. 1 crore is fast growing. The estate is in an area of 15.03 acres, in which 31 plots have been given to entrepreneurs for rubber based units. Under the new industrial policy of the state government, a *Green Channel Counter*, functions at the District Industries Centre, to mitigate problems faced by new

entrepreneurs. Besides the Dist. Industries Centre at Malappuram, 4 taluk industries offices and 14 block extension offices are functioning.

## **RURAL DEVELOPMENT**

Poverty alleviation programmes are implemented through development blocks under Integrated Rural Development Programme (IRDP). Around 5,000 families are given assistance under this programme. Priority is given to SC/ST families and women led families. Women, eligible for IRDP assistance are helped to organise self employment group activities under Development of Women and Children in Rural Areas (DWCRA) Programme. Other Women's Welfare programmes are conducted through Mahila Samajams under the blocks. The department has undertaken a project to ensure marketing of the products of DWCRA and IRDP units. Annual trade fairs are organised at the district level exclusively for this.

Another major programme implemented is the Jawahar Rozgar Yojana (JRY) through which community assets are created and employment given to rural people. SC/ST houses, School buildings, roads, etc. are constructed under Jawahar Rozgar Yojana. Sanitation latrines, community wells and irrigation wells are also provided through block Offices. The Rural Development department is headed by D.R.D.A. There are 14 Blocks.

## **SOCIAL WELFARE**

Integrated Child Development Scheme (ICDS) was introduced in the district in 1975 as a pilot project along with 28 Blocks in India. Now all the 14 Blocks in the district are covered under ICDS. Children below 6 years, lactating mothers and expecting women are the beneficiaries of the Scheme. Immunisation of children, pre-school education, supplementary nutrition to pre-school children, reduction of infant mortality, prevention of malnutrition illness, prevention of drop-outs in schools, health education and health care of women, etc. are the main objectives of the scheme. Anganwadis are the basic units of ICDS. One Anganwadi generally covers 1000 people.

A custodial care home for mentally retarded children, and an *Abala Mandir* to protect destitute women at Manjeri, a rescue home for women at Trikkannapuram, a rehabilitation centre at Manjeri for corrective measures for

Juvenile offenders are the other social welfare institutions in Malappuram district. Welfare of physically handicapped, rehabilitation of freed prisoners, assistance to the old, etc. are looked after by the Social Welfare Department. One district social welfare office, 14 ICDS Projects, one Dist. Probation Office, and one ICDS programme C0-Ordinating office, are the administrative set up.

## **EDUCATION**

The progress that Malappuram district attained in the field of education during the last decade is tremendous. Great strides have been made in the field of female education. There are 160 High Schools, 337 Upper Primary Schools and 826 Lower Primary Schools. Out of 160 High Schools, 4 were upgraded to Higher Secondaries and 20 were upgraded to Vocational Higher Secondaries. A massive project for quality improvement in education is being implemented in the district. The Scheme, Dist Primary Education Programme, aims at a total change in teaching practices.

There is one Kendriya Vidyalaya at Malappuram under Central Government, one Navodaya Vidyalaya under NCERT at Oorakam and one special school for the blind at Mankada, Pallippuram. Four Technical high schools also function at Manjeri, Kuttippuram, Nannamukku and Tirurangadi. 5 Primary Teachers' training institutes are there in the district - 2 in Govt. Sector and 3 in Aided Sector. For training High School teachers, one B.Ed. centre functions at Malappuram. The district is having 4 Post graduate colleges, 7 first grade colleges and 6 Oriental title colleges. In the professional sector, there is an Ayurveda college at Kottakkal. There is also an Agriculture Technology Institute at Tavanur which comes under the Agricultural University.

### **P.G. Colleges**

1. P.S.M.O. College, Tirurangadi
2. Dr. Gafoor Memorial M E S College, Mampad
3. N.S.S. College, Manjeri
4. M.E.S. College, Ponnani

### **First Grade Colleges**

1. Govt. College, Malappuram
2. Thunjan Memorial Govt. College, Tirur,

3. Govt. P.T.M. College, Perintalmanna
4. Mar Thoma College, Chungathara
5. M.E.S. College, Valancheri
6. E.M.E.A. College, Kondotty
7. Unity women's College, Manjeri

### **Oriental Title Colleges**

1. Anwarul Islam women's Arabic College, Mongam
2. Ansar Arabic College, Kalpakanchery
3. Dar-ul-Uloom Arabic College, Vazhakkad
4. Anwarul Islam Arabic College, Kuniyil
5. Madeenathul-Uloom Arabic College, Pulikkal
6. Sulamussalam Arabic College, Areekode.

### **Poly Technics**

1. Govt. Poly Technic, Perintalmanna
  2. Govt. Women's Poly Technic, Kottakkal
  3. Seethy Sahib Memorial Poly Technic, Tirur
- There are also one govt. Industrial Training Institutue at Areekode and 5 ITCs in Private Sector for diversified voccasional training.

### **Calicut University**

The seat of Calicut University is at Thenhippalam in Malappuram district. It was established in 1968 and it has 101 affiliated colleges, including 2 Medical Colleges, 2 Ayurveda Colleges, 1 Homoeo College, 3 Law Colleges, 4 Engineering Colleges and 5 B.Ed. colleges, stretched in 7 districts, from Thrissur to Kasaragod. Calicut University undertakes Post Graduate Teaching and Research under 24 faculties. About 1.30 Lakh regular students study in the university and its affiliated colleges. Another 2 lakh students are privately registered. Outside the University campus, the 2 study research centres are at Thrissur and Thalassery.

### **I.H.R.D.E. and L.B.S.**

At Malappuram, a College of Applied Sciences having BSc courses in Electronics and Computer Science, function under the institute of Human Resources Development in Electronics. Computer study sub centres under the

Lal Bahadur Sasthri Institute are functioning at Manjeri, Kondotty, Malappuram and Chemmad.

## **Engineering**

At Valancheri, an Engineering College is coming up in the private unaided sector.

## **HEALTH SERVICES**

A good network of health care units are functioning under the Government Sector. Modern medicine, Ayurveda and Homeopathy services are available.

### **Allopathy**

Under Modern medicine, one Dist. Hospital with all speciality services, functions at Manjeri. There are taluk hospitals at Tirur, Ponnani and Perintalmanna, Govt. Hospitals at Malappuram, Nilambur, Arcode and Tirurangadi. 15 Major public health centres, 77 mini public health centres and 565 Sub Centres are there. One T.B. Hospital at Manjeri, One TB Clinic at Ponnani, 3 Leprosy control units, 2 Filaria control units, etc. also function. Total bed strength of hospitals under government is 1500.

India Population Project II, implemented in the district achieved a breakthrough in health awareness. The common people, especially women, were given health education, resulting in improvement of pre-natal and ante-natal care, reduction of infant mortality, acceptance of immunisation, Control of communicable diseases etc.

The Dist. Medical Officer, Co-ordinates the health services. There are also a Dist. Immunisation Officer, Dist. Leprosy Officer, Dist. T.B. Officer, Dist. Health Education Officer and Dist. Mass Education Officer. In Allopathy, Private hospitals with super speciality units also function in the district.

### **Ayurveda**

World famous Kottakkal Arya Vaidya Sala is 12 Km from Malappuram. It provides patronage of research and development of Ayurvedic treatment. Under the Government sector, one Dist. Ayurveda Hospital with 50 beds, function at Edarikode. The only Ayurvedic Mental Hospital in the state is at Kottakkal with 50 beds. 2 Hospitals at Manjeri and Velimukku with 20 beds each,

6 hospitals at Perintalmanna, Malappuram, Vengara, Thozhanur, Thiruvalli and Chelembra with 10 beds each and 52 dispensaries are also there. The Dist. Medical Officer (ISM) is the co-ordinating officer.

### **Homeopathy**

This branch of medicine has got vast acceptance among the people. Two 25 bedded Govt. Homeo hospitals function at Malappuram and Manjeri apart from 30 Govt. Homeo dispensaries in the district. There is a Dist. Medical Officer for Homeo at Malappuram.

### **PROTECTED WATER SUPPLY**

Malappuram district is prone to drought and acute drinking water shortage during summer. Hence protected water supply is given priority in developmental schemes. At the time of the district formation only 9 rural water supply schemes were there. Malappuram and Tirur urban water supply schemes are being expanded. Urban water supply scheme for Manjeri is nearing completion. An urban scheme for Perintalmanna, at a cost of Rs. 12.50 crores, is in the anvil. A major scheme with Danish aid is nearing completion, which will cater to the needs of Edappal, Vattankulam, Tavanur, Alankode and Nannamukku Panchayats . A Danish aided scheme covering Kondotty and Nediyruppu Panchayats is being commissioned. Malappuram, Manjeri; Tirur, Perintalmanna, Ponnani, Parappanangadi, Tanur, Kottakkal, Kondotty, Edappal, Kuttippuram, Nilambur, Tirurangadi, Wandoor are among the major existing schemes. Separate schemes for SC/ST colonies have been started.

A scheme of constructing check dams in the rivers prone to dry spells in summer, to ensure water to the water supply schemes , is being implemented. Kerala Water Authority has 2 divisions in the district - Edappal and Malappuram.

### **IRRIGATION**

Although 3 major rivers of Kerala flow through the district, Malappuram district has no major irrigation project and hence frequent drought is experienced. Two major irrigation schemes are in the preliminary stage. They are Chamravattom Regulator-cum-Bridge Project in Bharathapuzha at Ponnani and the Chaliyar River Valley Project across Chaliyar at Chungathara. Chaliyar

project, which would be the biggest irrigation project in Kerala, is nearing implementation stage. A dam of 950 M length and 68 m height is to be constructed at Ambittampotty, 25 Km away from Nilambur and 288 million cubic metres of water stored here to irrigate 73235 H of land in Malappuram and Kozhikode districts. Additional water of 259 million cubic metre from 2 proposed hydel projects at Chalipuzha and Cholathipuzha are also envisaged for the Chaliyar system. Chamravattom regulator is intended to resist salination of Bharathapuzha and Tirurpuzha to protect the paddy lands of Ponnani and Tirur from salt water, and to provide irrigation facilities to 22,000 hectares of land in Malappuram & Thrissur districts.

Under the Minor Irrigation Department, an 8 crore project, namely Kavanakkallu Regulator-Cum-Bridge Scheme at vazhakkad across Challiyar, is nearing completion. This scheme will provide water to 2,000 hectares in Malappuram and Kozhikode district, resist salination of Kozhikode water supply scheme and give additional quantity of 32 lakh cubic metres of water for the Kozhikode Water Supply, reducing the distance to Kozhikode from Areekode by 10 Kms.

Twenty four Check dams in forest lands under Wasteland Development Scheme to harness water, were taken up and completed. At present 34 Lift irrigation schemes and 9 Class I and 571 Class II schemes under Minor Irrigation Department, provide water for a total of 25,505 Ha. in the district. More schemes are in the various stages of implementation.

## **WATERSHEDS**

The National Watershed Development Programme is implemented in this district. Under this, detailed soil and water survey is taken up in 14 watersheds, one in each block. Under Western Ghat Development Scheme Watersheds of Koramala in Wandoor Block, Morayur in Malappuram Block, Edavannappara in Kondotty Block are also taken up. Conservation of soil and harnessing of water is the main purpose of watershed development. It also helps the cultivators in streamlining rainfed crops. Scientific agricultural operations for areas prone to landslips are implemented and training imparted to farmers. Proper protection of watershed areas is necessary to prevent drought and to promote vegetation.

## TRIBAL DEVELOPMENT

Scheduled Tribe population is 10,555. Muthuvan or Malamuthan, Paniyan, Aranadan, Kuruman, Kattunaikkan and Chola naikkan are the Tribal communities in Malappuram district. Of these, Kattunaikka and Chola naikka are primitive tribes. There are 165 tribal settlements stretched in the hill ranges of Ernad taluk. Housing schemes, agriculture schemes, employment generation schemes etc. are the main development programmes undertaken for the tribes. Integrated Tribal Development Project office at Nilambur is implementing the programmes.

A novel venture, *Asrama Vidyalaya*, has been started at Manjeri, for residential schooling of children of primitive tribes like Chola Naika and Kattunaika.

## SCHEDULED CASTE DEVELOPMENT

The Dist. has a scheduled caste population of 25,573. The main communities are Pulaya, Paraya, Kanakka Panan, Mannaan, Perumannaan, Kalladi, Cheruma etc. Education is given priority in developmental programmes for the scheduled castes.

Various social welfare measures like house construction, providing land and house to the landless and houseless among the Scheduled Castes, thatching and filling grants, sanitation latrine construction, lumpsum grant and stipend to SC students, etc are undertaken by the SC development department. Educational Assistance to Other Backward Communities, Other Eligible Communities, and financially backward students of forward communities are also given by this department.

## ACCOMMODATION

There is one Guest House at Malappuram under the Department of Tourism. P W D Rest Houses and Tourist Bungalows are there at all important centres.

1. Guest House Malappuram
2. Rest House, Malappuram
3. Rest House, Manjeri
4. Rest House, Tirur
5. Rest House, Ponnani
6. Rest House, Angadipuram
7. Rest House, Kottakkal
8. Rest House, Nilambur
9. Rest House , Thrurangadi
10. Rest House, Parappanangadi
11. Rest House, Edavanna
12. Rest House Kuttippuram
13. Tourist Bungalow Perintalmanna
14. Tourist Bungalow Ponnani Nagaram
15. Tourist Bungalow Tanur
16. Tourist Bungalow Wandoor
17. Tourist Bungalow Areekode
18. Tourist Bungalow Pandikkad

There are Rest Houses under Calicut University at Thenhippalam, under K.F.R.I. at Nilambur and under Water Authoirity at Tirur. In the Private sector, there is one 2 starred hotel at Malappuram. Hotel and lodging facilities are available in all towns although not of international standards. Hotel Mahendrapuri, Malappuram, hotel Sabrina, Perintalmanna, K T D C Hotel Sabala, Nilambur, K T D C Hotel Sabala, Perintalmanna, are some of the good ones.

## BARE FACTS

1. Area (Sq. Kms.)	3550
2. Population (in 000's)	3096
3. Percentage to State Population	10.64
4. Males (in 000's)	1508
5. Females (in 000's)	1588
6. Sex ratio : Females/1000 Males	1053
7. Density of Population (per sq. Km)	872
8. Per capita Income (In Rupees)	3107
9. No. of households (in 000's)	477
10. Average size of Family	6.49

### 11. Projected population as on 1st March

Year	1996	1997	1998	1999	2000
Population (in 000's)	3311	3355	3400	3446	3493
<i>(Population statistics - 1991 Census)</i>					

### 12. Average monthly rainfall in m.ms. (1991)

Month	Jan	Feb	Mar	Apr	May	Jun	Jul	Aug	Sep	Oct	Nov	Dec	Annual
Rainfall	0	0	2	116	59	992	951	469	32	269	110	2	3000

### 13. Length of Coast Line

- 70 Kms.

### 14. Gross area under irrigation (crop wise) 1990-91

Crops	Paddy	Tubers	Vege- tables	Coconut	Areca- nut	Cloves & Nutmeg
Area (in hectes)	19213	102	913	5956	3327	19
Crops	OtherSpices & Condiments	Banana	Betal leaves	Sugar- cane	Others	Total
Area (in hectes)	79	1696	549	10	715	32,579

**15. Livestock Population (1987)**

Cattle	Buffalos	Goats	Sheep	Pigs	Others
2,29,765	19,019	1,74,412	1,270	438	6,719
Total livestock			Total poultry		
4,31,355			20,17,816		

<b>16. No. of Registered Working Factories (1992)</b>	-	762
<b>17. No. of SSI units as on 31-3-1993</b>	-	4640

**18. Distribution of PWD Roads (Manjeri Division) as on 1-4-1993 (in Kms.)**

State	Major Dist.	Other Dist	Village	Total
Highways	Roads	Roads	Roads	
164.44	407.75	825.53	347.54	1745.6

**19. Schools (1992-93)**

Section	No. of Schools	No. of Students	No. of Teachers
LPS	830	3,53,585	9,587
UPS	340	2,59,014	7,300
H.S	160	1,70,999	5,605
Total	1,330	7,53,598	22,492

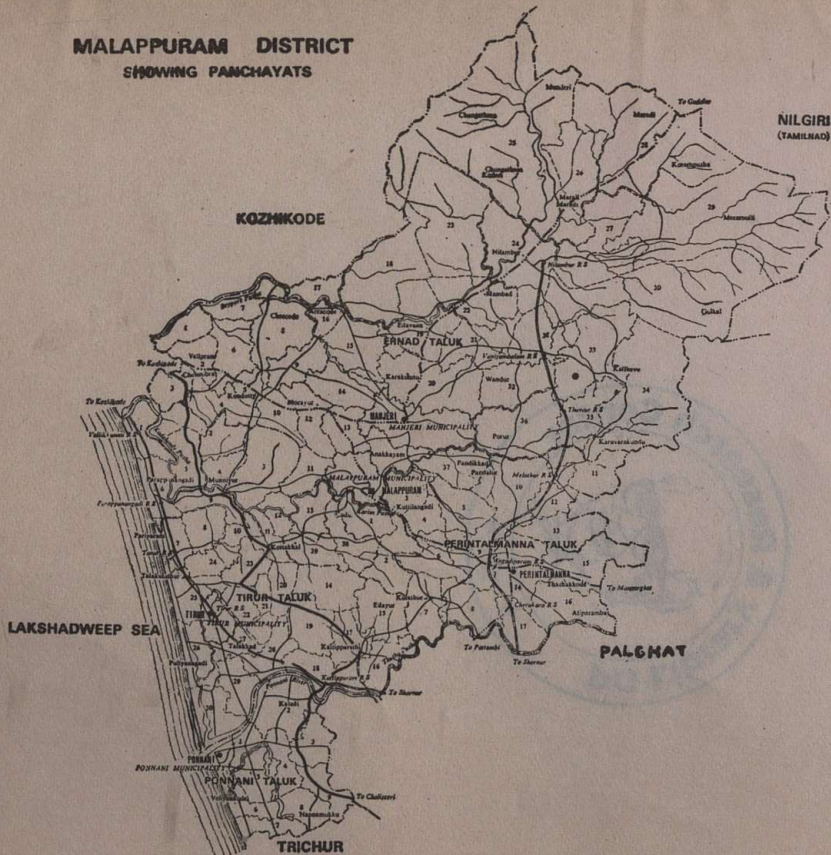
**20. Arts & Science Colleges**

Govt.	3	3,044	93
Private	8	10,550	409
Total	11	13,594	502












**21. Medical Institutions**

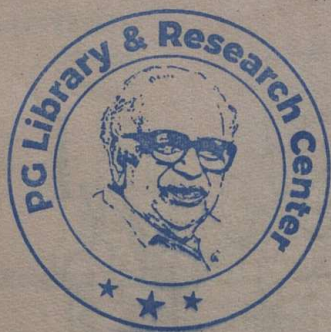
	Allopathy	Ayurveda	Homeopathy
No. of Medical Institutions	115	66	33
No. of Beds	2089	200	50

**MALAPPURAM DISTRICT**  
SHOWING PANCHAYATS



**REFERENCE**

- District Boundary 
- Taluk Boundary 
- Panchayat Boundary 
- Municipal Boundary 
- National Highway 
- State Highway 
- Other Roads 
- Railway Line 
- Rivers 
- District Headquarters 
- Taluk Headquarters 



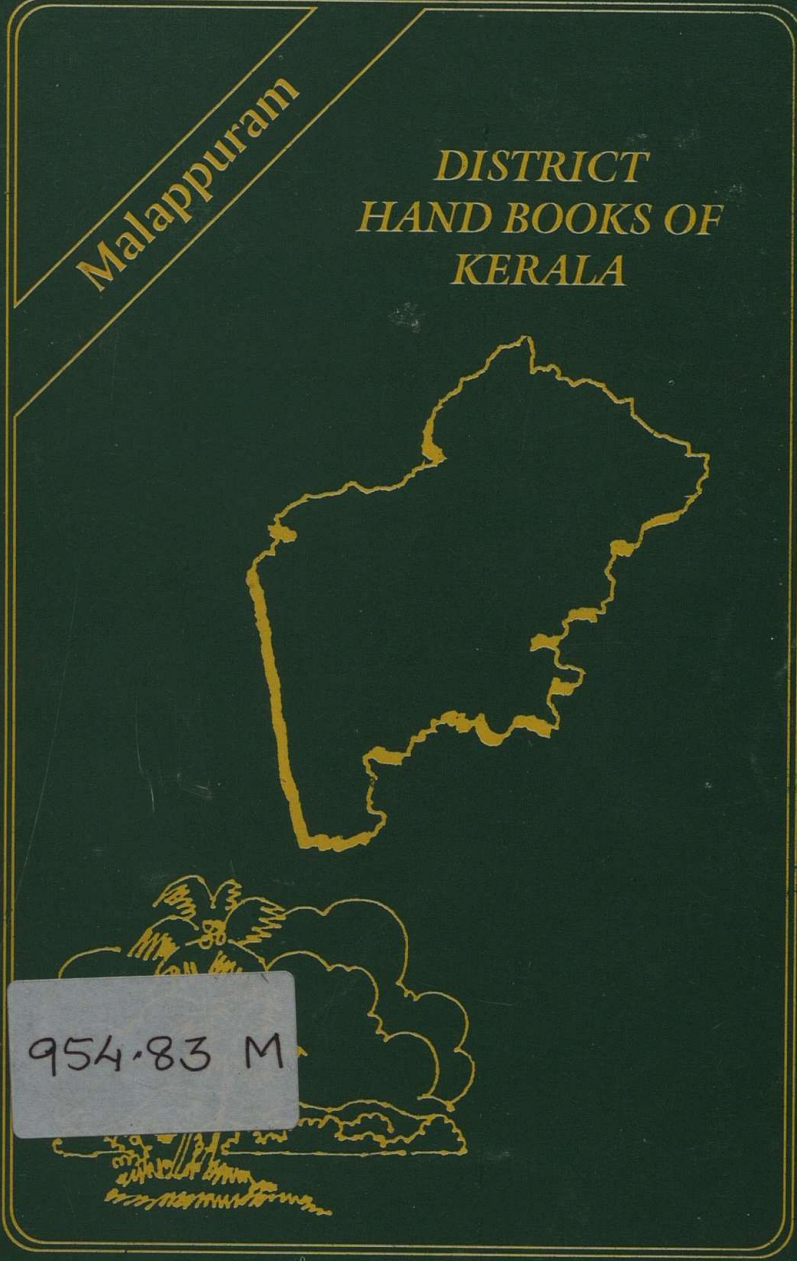




edited, printed and published by the director of public relations,  
govt. of kerala, printed at ksavrc press, thiruvananthapuram

Malappuram

DISTRICT  
HAND BOOKS OF  
KERALA



954.83 M

DEPARTMENT OF PUBLIC RELATIONS  
GOVERNMENT OF KERALA

